

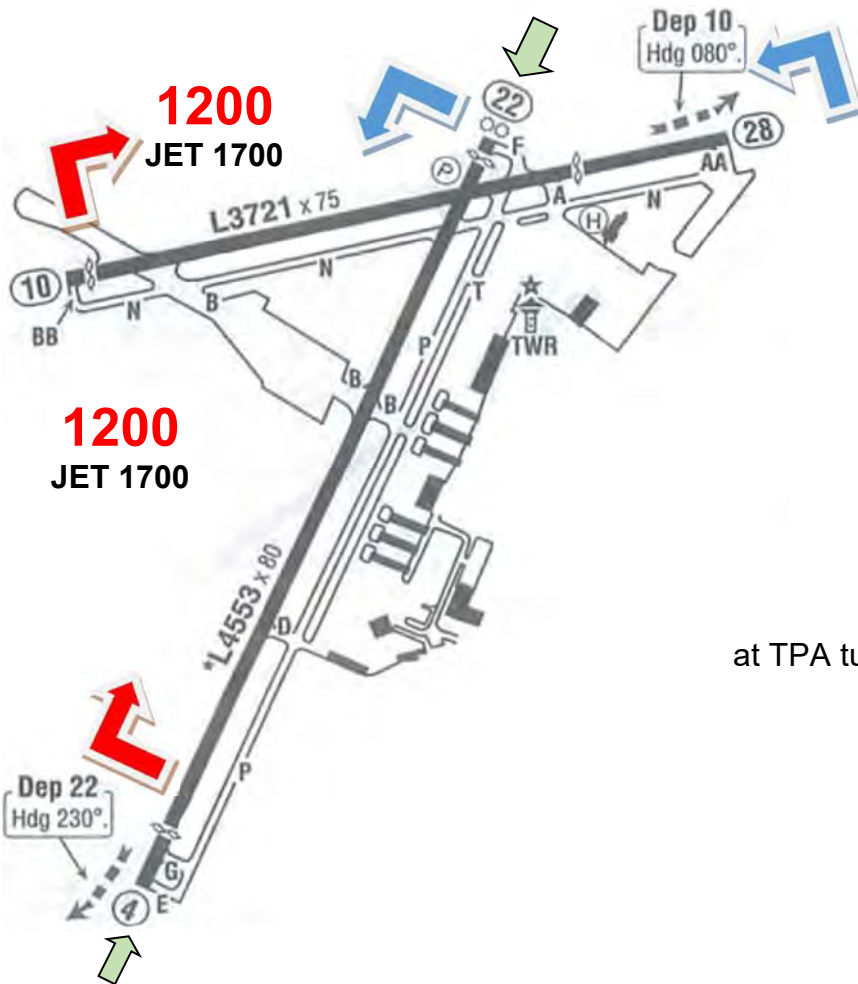
Eastcoast (NJ/NY)

CDW	2-3	Caldwell/Essex Co
MMU	4-6	Morristown Muni
LDJ	7	Linden
N07	8	Lincoln Park
	9-11	Hudson River Exclusion 123,05
	12	Skyline Route (Class B VFR Transition)

172 ft

CDW

Caldwell/Essex Co



1200
JET 1700

1200
JET 1700

ATIS 135,5
TWR 119,8 *C
 7-23 LT
GND 121,9

Loc 22 109,35

Ldg Fee for Transient A/C

No Local Ops Mo-Sa 23-07 LT, Su - 10 LT

DEP 4: Rwy-Hdg for 1 NM, then...

DEP 10: H 080° until 900 ft, then...

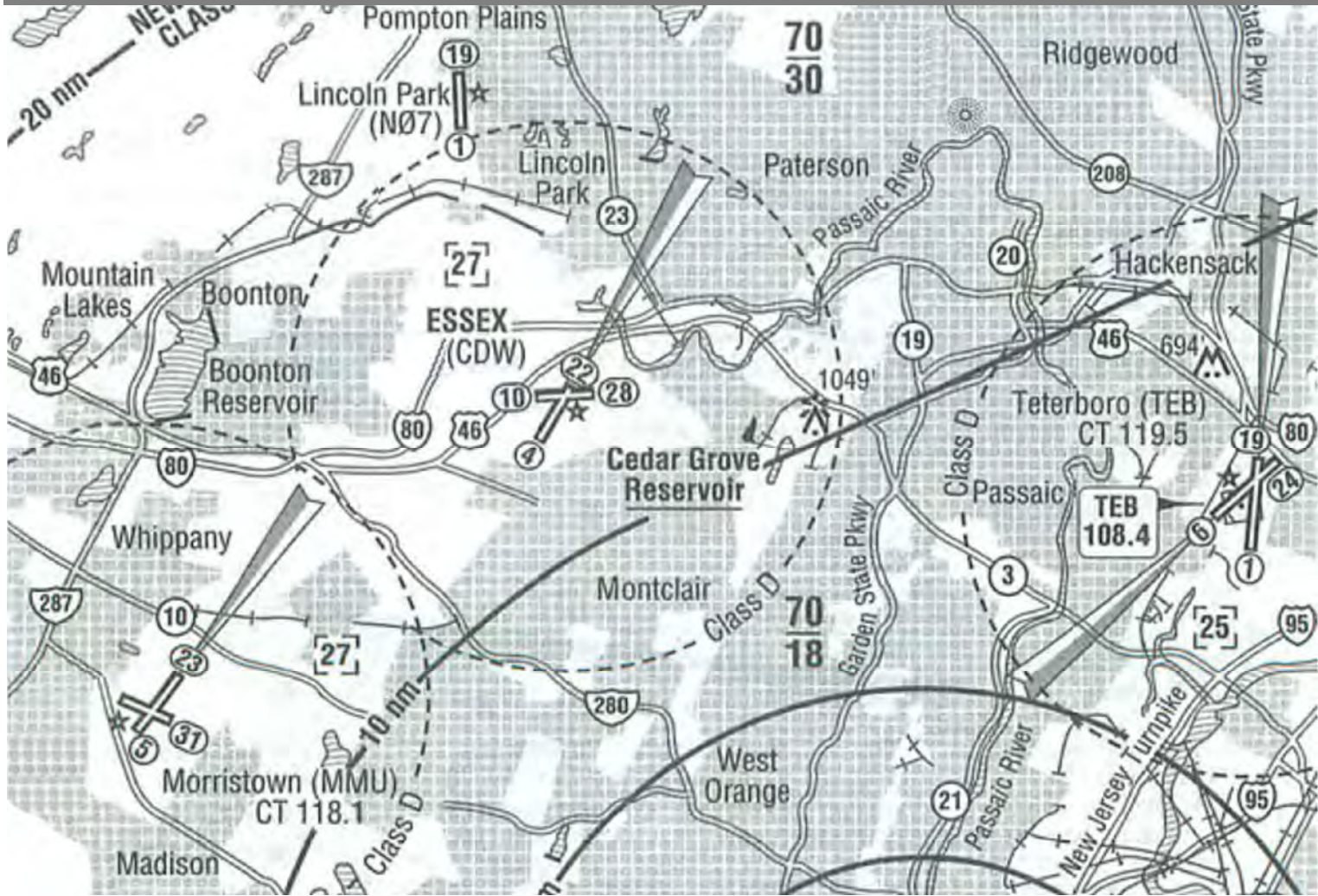
DEP 22: H 230° until 900 ft, then...

DEP 28: Rwy-Hdg, then...

...turn X-wind, continue straight-out or

at TPA turn 45° to NW (Rwy 4/10: LT - Rwy 22/28: RT)

CDW Area



187 ft

MMU

Morristown Muni

ATIS 124,25

TWR 118,1 *C

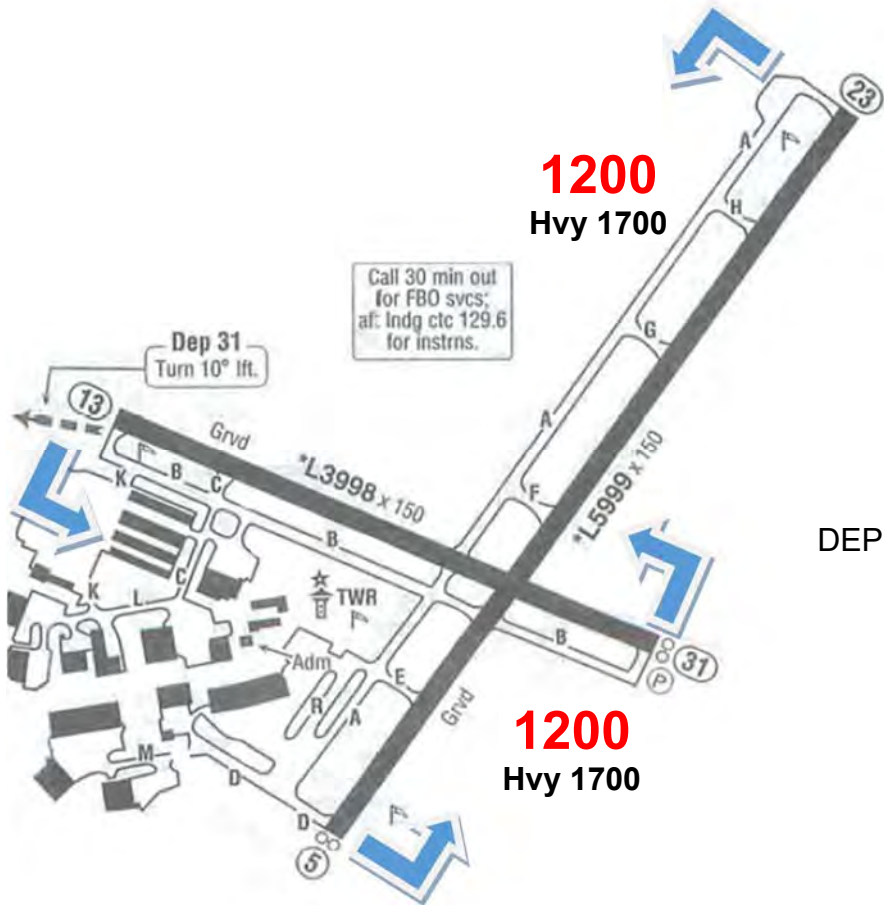
GND 134,2

1200

Hvy 1700

Call 30 min out
for FBO svcs;
af: Indg ctc 129.6
for instrns.

Dep 31
Turn 10° lft.



- ARR 23: follow RTE 80 Visual App
- ARR 13: Straight-in via 3 NM
- ARR 5/31: 45°-entry abeam Dep-end

No closed traffic 22-8:30 LT

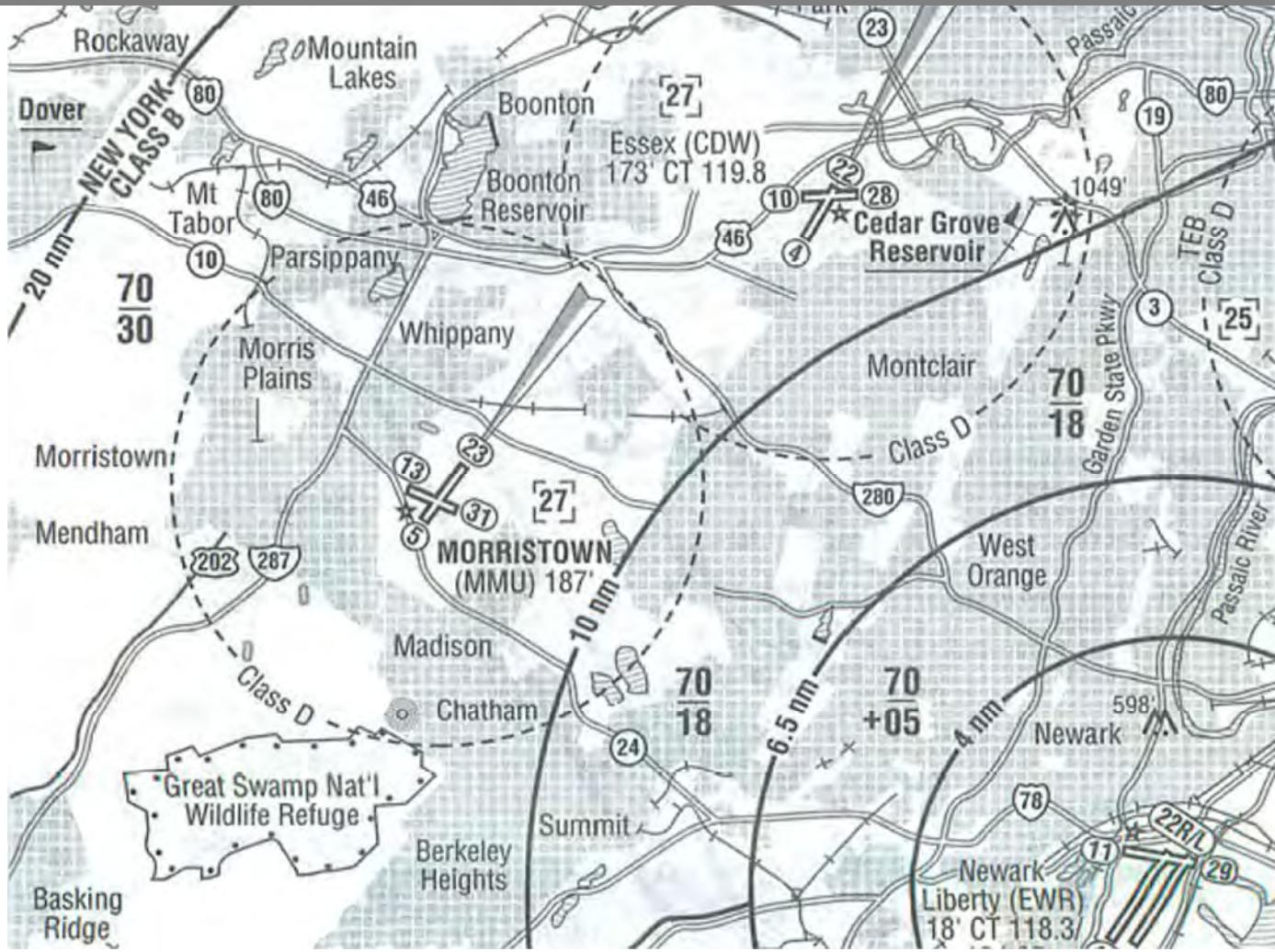
No Touch & Go on Rwy 13/31
or during Snow removal

- DEP 5/13/21: Rwy-Hdg to 1200 ft, then on course
- DEP 31: H 300° to 1200 ft, then on course

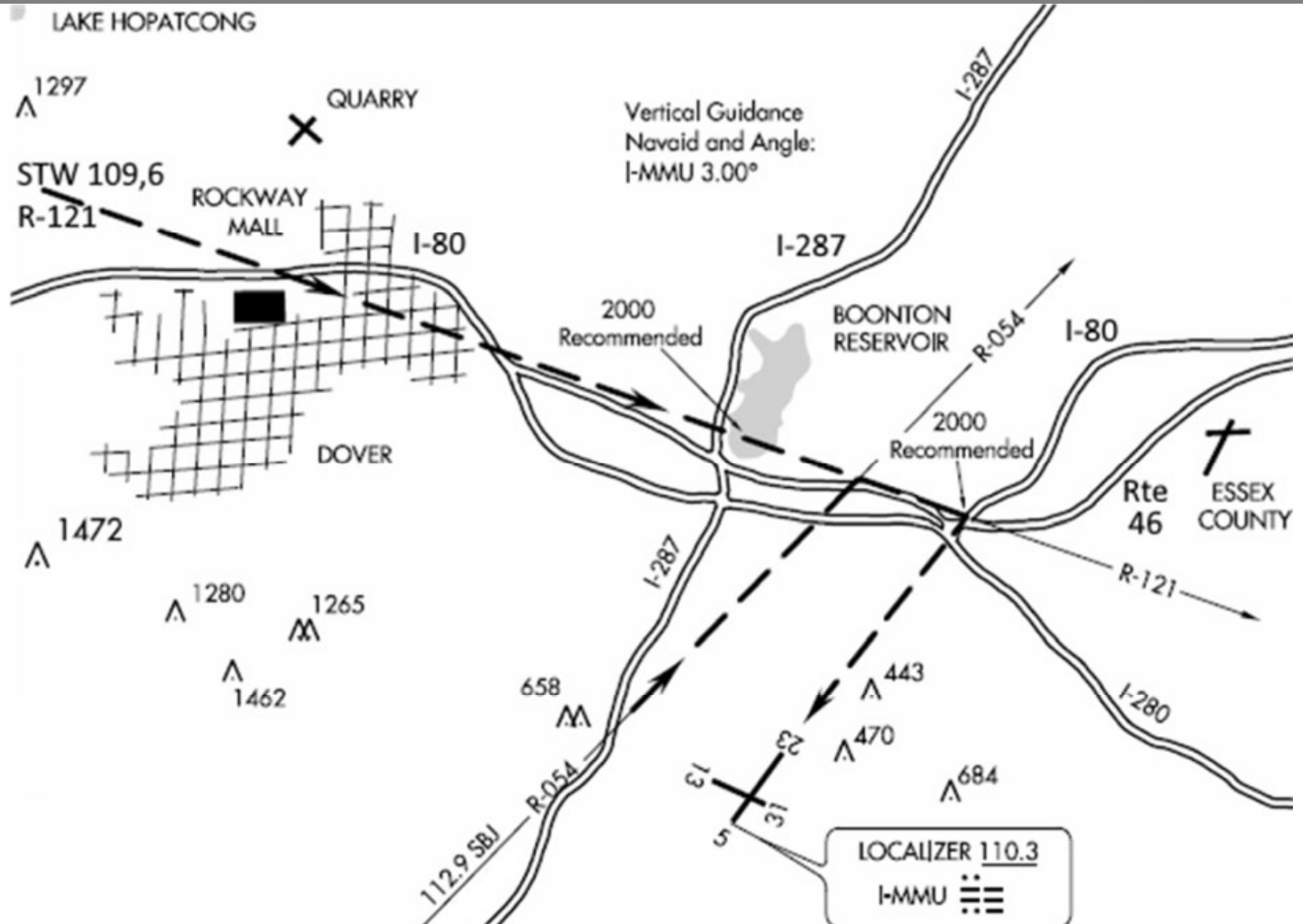
1200

Hvy 1700

MMU Area



MMU Route 80 Visual

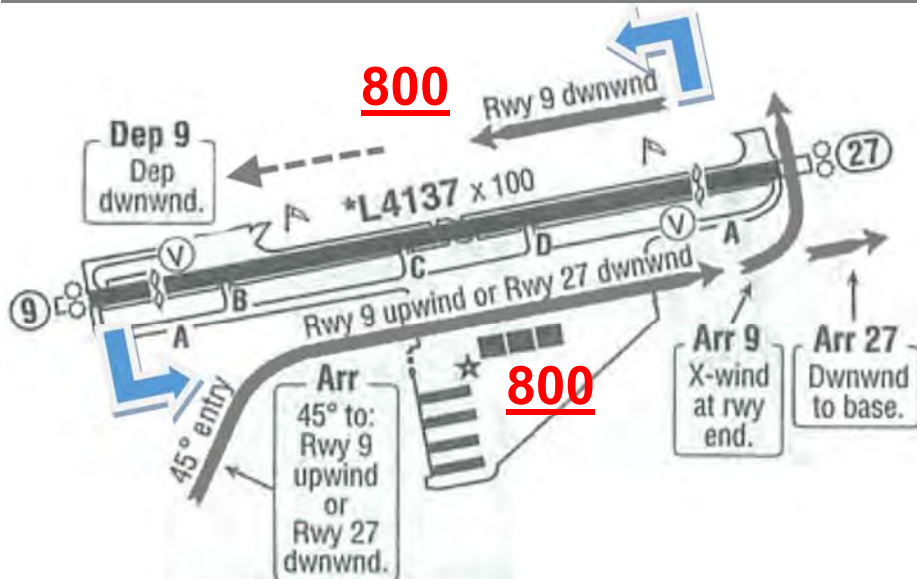


AWOS 124,025
CTAF 123,0*

Ldg Fee for Transient A/C
No Touch & Go
North-Twy closed

ARR: 45°-entry to Downwind 27, then...
Rwy 27: ...continue downwind to base
Rwy 9: ...fly x-wind at Rwy-end,
then enter downwind.

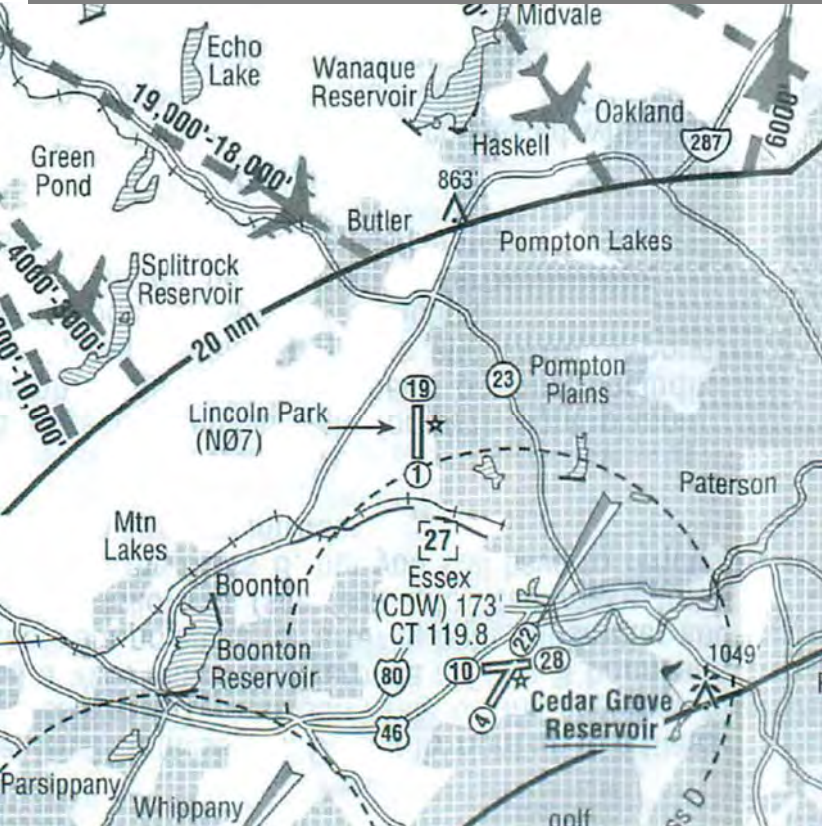
DEP 9: downwind-departure
DEP 27: Rwy-Hdg to 800 ft



182 ft

N07

Lincoln Park



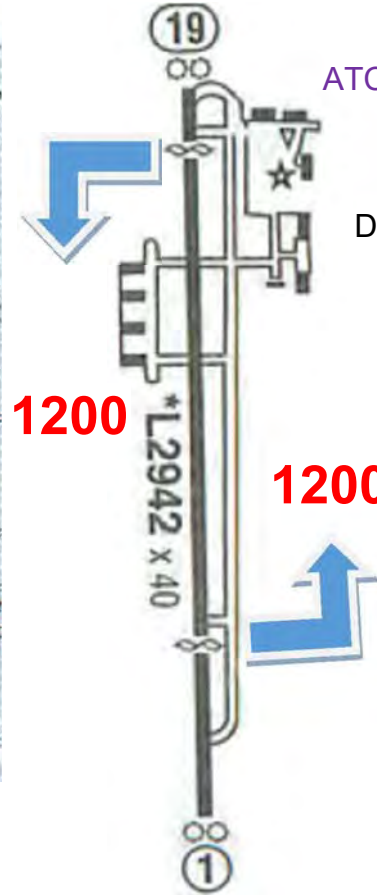
CTAF 122,8*

GCO 121,725

ATC: 4 clicks / FSS: 6 clicks

No Touch & Go

DEP 1: Rwy-Hdg to 900 ft



Hudson River Exclusion 123,05

Speedmax. 140 knots
 Exterior Lights..... CHK ON
 Altitude..... Local <1000 ft / 1000 Transient* < 1300 ft
 Fly on right side of Hudson (S-bnd: West / N-bnd: East)

CTAF 123,05

A/C type	Position	Direction	Altitude
	Alpine Tower GWB Intrepid Clock Statue of Liberty VZ	North- Or South bound	-1300 ft
			Transient*
			1000 ft
			Local
<i>Cessna</i>	<i>GWB</i>	<i>southbound</i>	<i>900 feet</i>

Transient: A/C without intending to significantly change Hdg, Alt, or Spd

- Circling the Statue of Liberty

Altitude highest practical < 1000 ft
 Circle Counter-Clockwise

Attention: Helicopter at appr. 500 ft and other traffic present

Note: Entering Hudson River Exclusion from north, consider flight as transient operation (1000 < 1300 ft) past Verrazano-Narrows Bridge, then re-enter Exclusion at a lower altitude to circle the Statue.

East River Exclusion 123,075

Fixed wing aircraft only with authorization by ATC

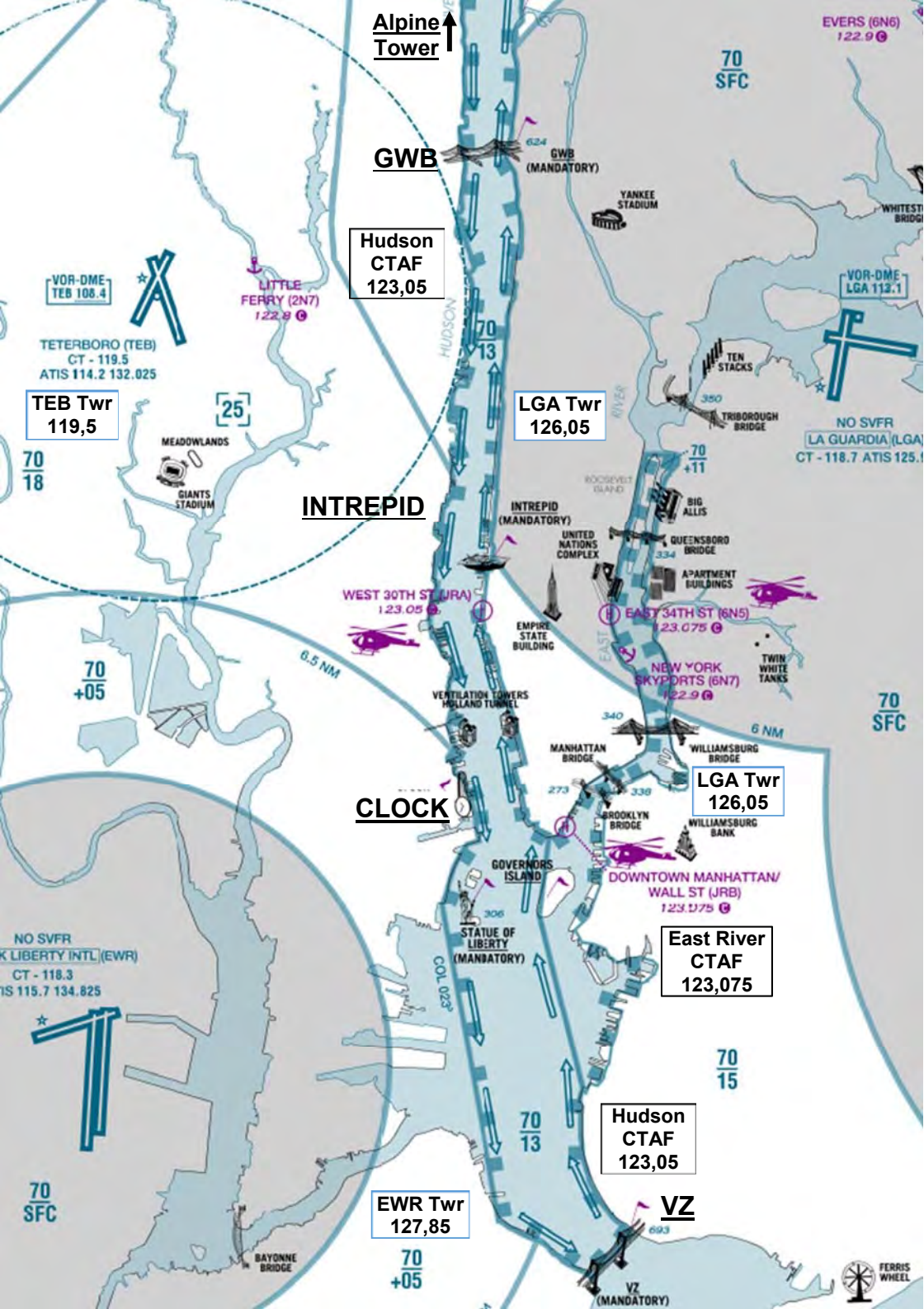
Call **LGA 126.05** prior Governors Island

also monitor/report on **123.075 (CTAF)**

Speedmax. 140 knots

Governor's Island - Brooklin Bridge - Manhattan Bridge

Williamsburg Bridge -|- Queensboro Bridge



Alpine Tower ↑

EVERS (6N6) 122.9

70 SFC

GWB

GWB (MANDATORY)

Hudson CTAF 123,05

VOR-DME TEB 108.4

LITTLE FERRY (2N7) 122.8

TETERBORO (TEB) CT - 119.5 ATIS 114.2 132.025

TEB TWR 119,5

LGA TWR 126,05

VOR-DME LGA 113.1

NO SVFR LA GUARDIA (LGA) CT - 118.7 ATIS 125.1

INTREPID

INTREPID (MANDATORY)

WEST 30TH ST (JRA) 123.05

EAST 34TH ST (6N5) 123.075

NEW YORK SKYPORTS (6N7) 122.9

70 +05

CLOCK

LGA TWR 126,05

East River CTAF 123,075

Hudson CTAF 123,05

EWR TWR 127,85

VZ

VZ (MANDATORY)

70 SFC



LGA TWR 126,05

Hudson CTAF 123,05

VOR-DME TEB 108.4

TETERBORO (TEB) CT - 119.5 ATIS 114.2 132.025

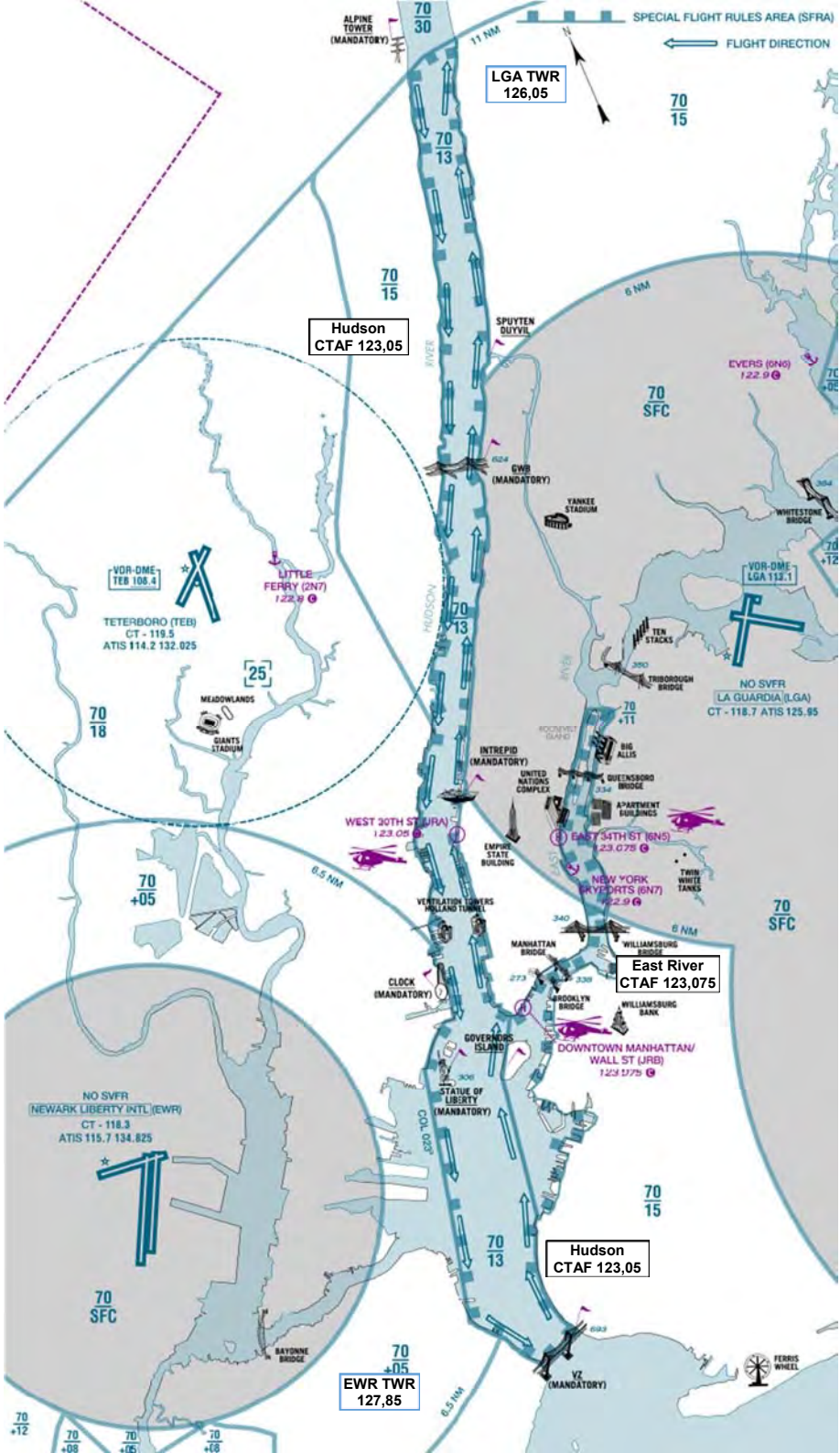
VOR-DME LGA 112.1

NO SVFR LA GUARDIA (LGA) CT - 118.7 ATIS 125.85

East River CTAF 123,075

Hudson CTAF 123,05

EWR TWR 127,85



Skyline Route (Class B VFR Transition)

VFR TRANSITION ROUTE
 (ATC CLEARANCE REQUIRED)
 ALTITUDE ASSIGNED BY ATC

REQUIREMENTS OF CFR 91.215 AND 91.131 SHALL BE MET

SKYLINE ROUTE

Skyline Route: Lies above the Hudson River between the Verrazano Bridge and the Alpine Tower. Assists controllers in determining a pilot's route of flight and offers Class B clearance based on traffic conditions and runway flow at LGA. Northbound aircraft should contact EWR Tower on 127.85 prior to the Verrazano Bridge and expect to fly along the east bank of the Hudson River. Southbound aircraft approaching from the north should contact LGA Tower on 126.05 prior to the Alpine Tower and expect to fly along the west bank of the Hudson River. Until authorization is received, remain outside the New York Class B. On initial contact, advise ATC of position, altitude, route name desired, and direction of flight. Available altitudes between 1300' and 2000' as assigned by ATC. ENR/ATIS 115.7 LGA ATIS 125.95

REMAIN CLEAR OF THE NEW YORK CLASS B UNTIL RECEIVING SPECIFIC ATC APPROVAL TO ENTER

Clearance REQ

EWR 127,85

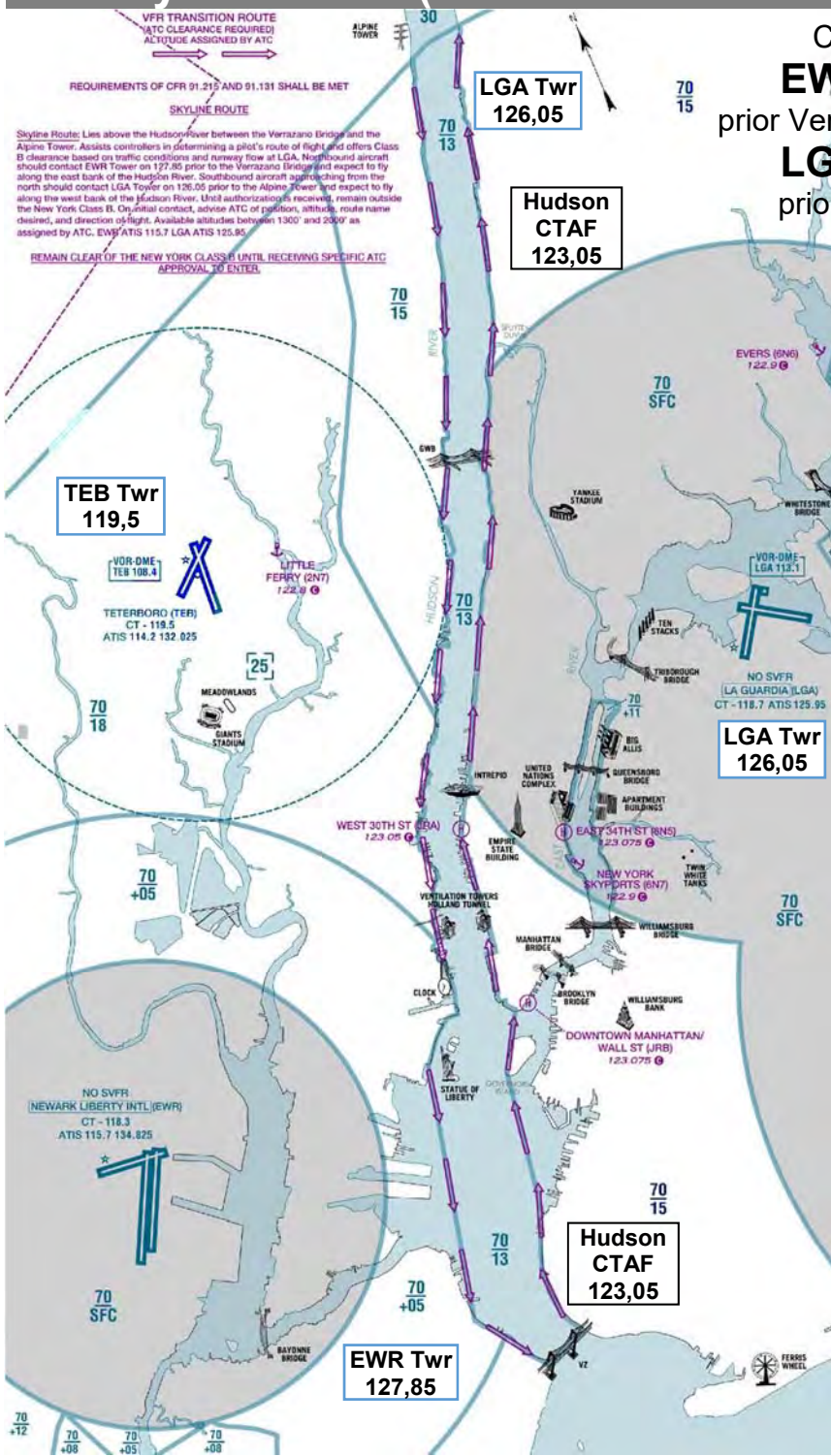
prior Verrazano Bridge

LGA 126,05

prior Alpine Tower

Altitude

1300-2000 ft



TEB Twr
119,5

VOR-DME
TEB 108.4

TETERBORO (TEB)
CT - 119.5
ATIS 114.2 132 025

LGA Twr
126,05

Hudson
CTAF
123,05

LGA Twr
126,05

Hudson
CTAF
123,05

EWR Twr
127,85

Eastcoast (NJ/NY)

CDW	2-3	Caldwell/Essex Co
MMU	4-6	Morristown Muni
LDJ	7	Linden
N07	8	Lincoln Park
	9-11	Hudson River Exclusion 123,05
	12	Skyline Route (Class B VFR Transition)