

Arizona / Nevada

1AZ0	2	Bishop Airfield (Mobile)
BXK	3	Buckeye Muni
CGZ	4	Casa Grande Muni
CHD	5-6	Chandler Muni
DUG	7	Bisbee Douglas Intl
DVT	8-9	Phoenix Deer Valley
E60	10	Eloy Muni
E63	11	Gila Bend Muni
E68	12	Estrella Sailport
FFZ	13-14	Falcon Fld, Mesa
FHU	15	Sierra Vista Muni `Libby`
FLG	17-18	Flagstaff Pulliam
GEU	19-20	Glendale Muni

GYR	21-22	Phoenix Goodyear
HND (HSH)	23-24	Henderson Exec.
IGM	25	Kingman
NYL (YUM)	26-27	Yuma McAs/ Intl
PHX	28-29	Phoenix Sky Harbour
PRC	30-31	Love Field, Prescott
RYN	32-33	Ryan Field, Tucson
SDL	34-35	Scottsdale
SEZ (SDX)	36	Sedona
TUS	38-39	Tucson
VGT	40-41	North Las Vegas
	42	Luke SATR Areas
	43	PHX VFR transition

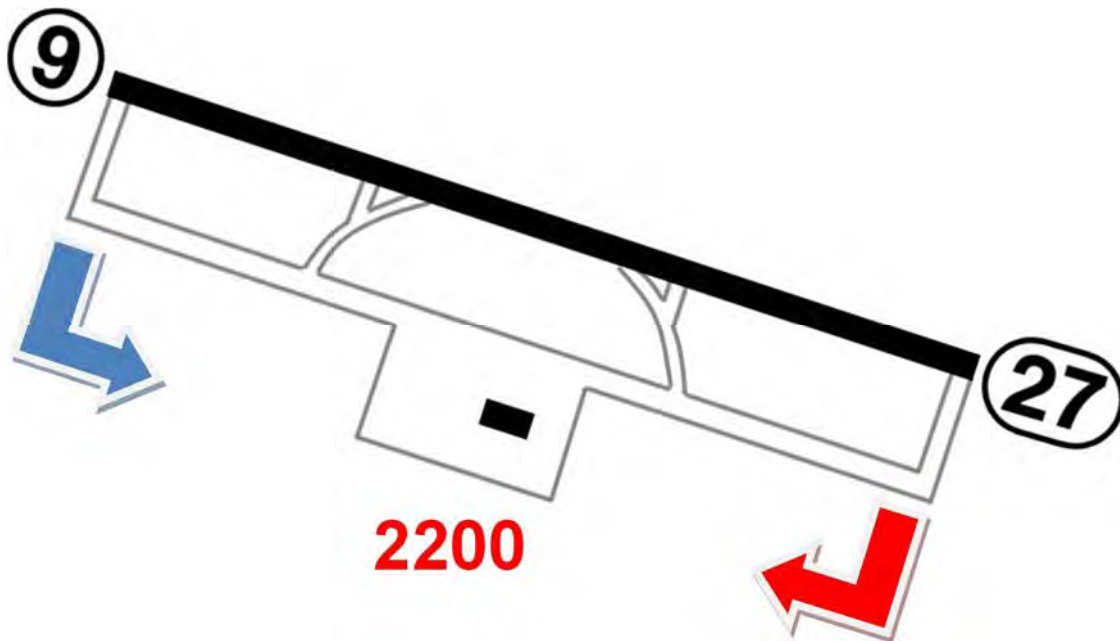
1261 ft

1AZ0

Bishop Airfield (Mobile)

CTAF 130,475*

*MIRL 6-18 only



1032ft

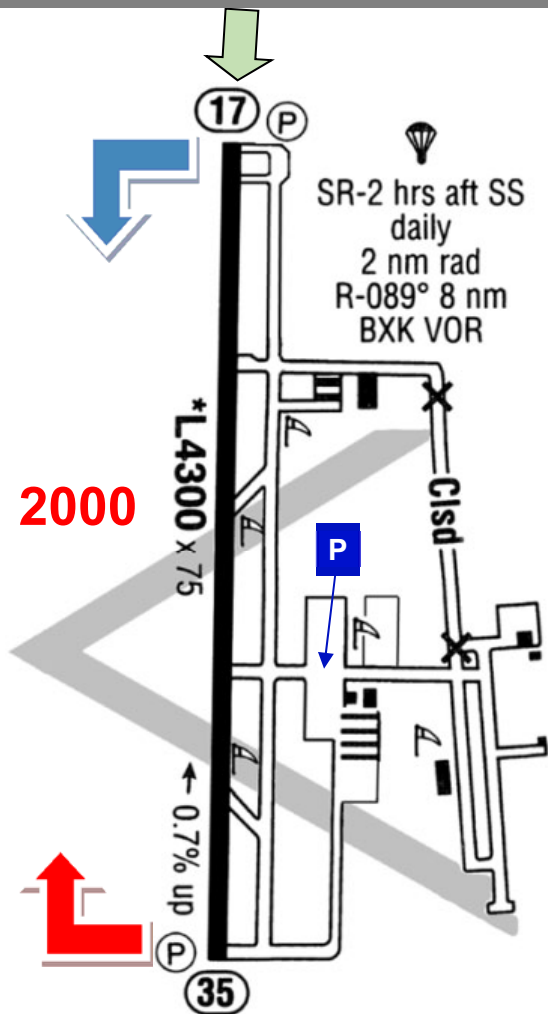
BXK

Buckeye Muni

Awos 119,625

CTAF 122,975*

Low Level Jet Traffic
Wildlife
Intensive Parachute Jumping



1464ft

CGZ

Casa Grande Muni

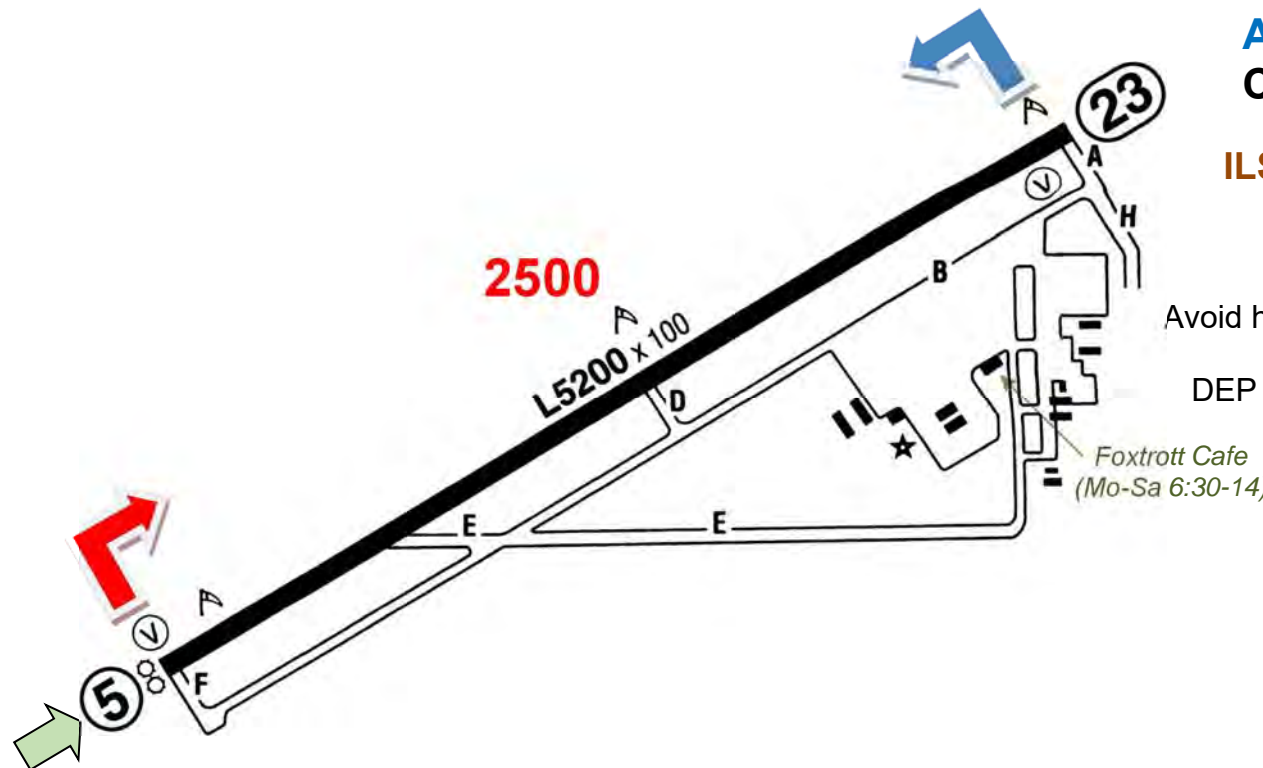
Awos 132,175

CTAF 122,7*

ILS 5 111,15

Parachute
Avoid homes N and trailers

DEP 5: Rwy-Hdg to Frwy



1243 ft

CHD

Chandler Muni

ATIS 128,325

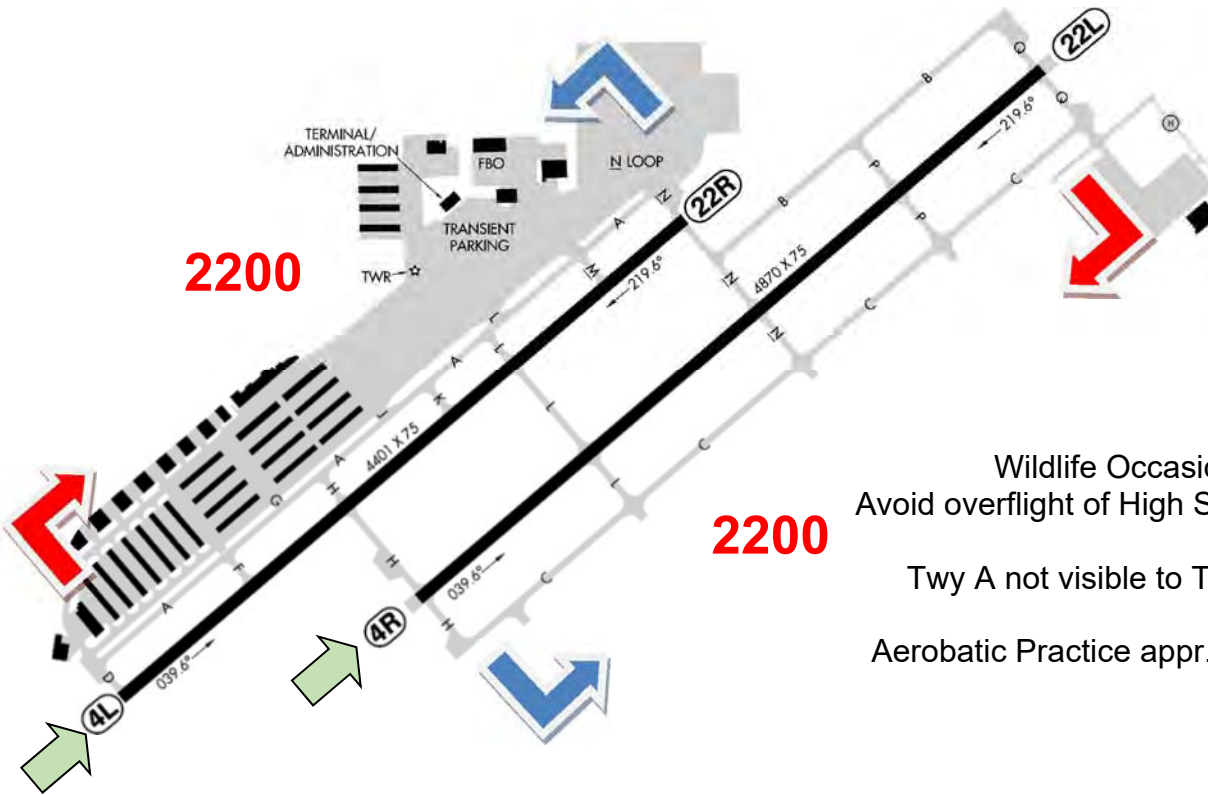
TWR 126,1^C

NW

133,1 SE

6-21 LT

GND 124,4



2200

2200

Birds
 Wildlife Occasionally on Rwys & Twys
 Avoid overflight of High School 2 Nm SW of A/P

Twy A not visible to Twr between Twy D & F

Aerobatic Practice appr. 5 NE SE GND-5000 ft

4150 ft

DUG

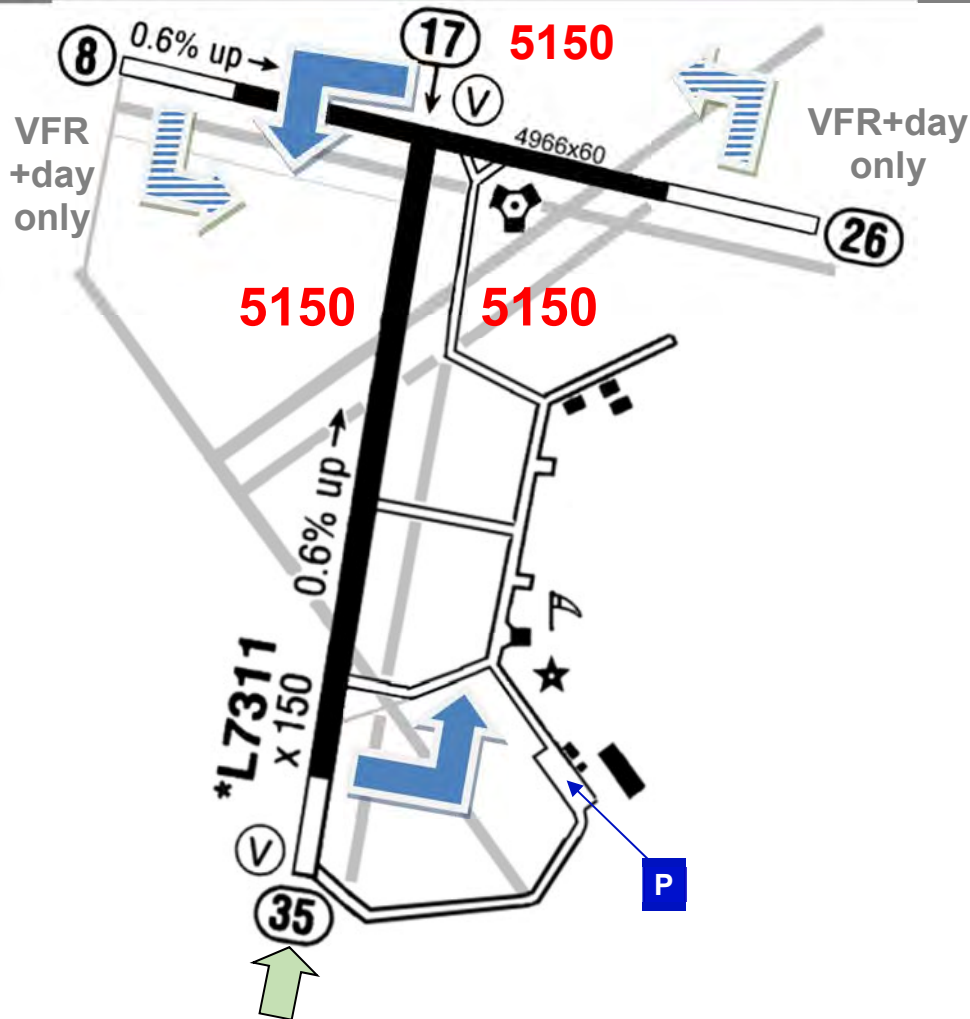
Bisbee Douglas Intl

ASOS 119,275

CTAF 123,0*

Wildlife

Rwy 8/26: VFR DAY ONLY

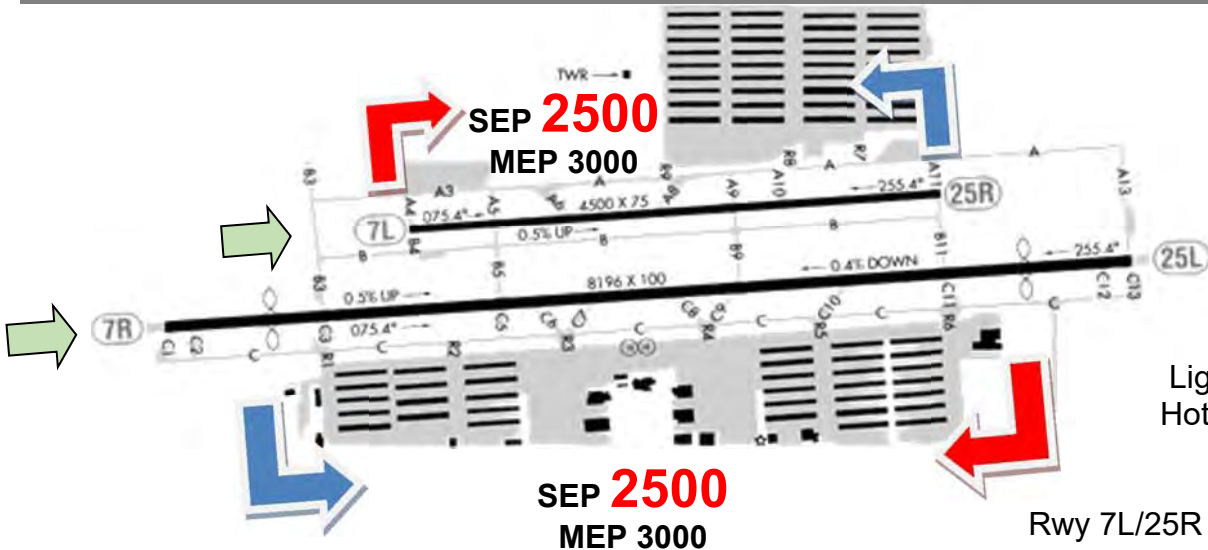


1478 ft

DVT

Phoenix Deer Valley

ATIS 126,5
TWR 118,4*^C S
120,2 N
 6-24 LT
GND 121,8



Lighted hills NE, E, SE, W
 Hot Air Balloon N, NE, NW
 Birds, Wildlife

Rwy 7L/25R designated for Training

Do not mistake Twy N for a Rwy

ARR from N: Twr 120,2
 from S: Twr 118,4

DVT Area



Aerobic Practice Area (GND-6000 ft)
appr. 8,5 NM NW

Intensive Pilot Training Area
use extreme Vigilance within 20 NM

Special Air Traffic Rule (SATR)
W of A/P: check Sectional/TAC

1511 ft

E60

Eloy Muni

CTAF 122,8*

Seasonal Crop Dusting Operation

ARR A/P from W

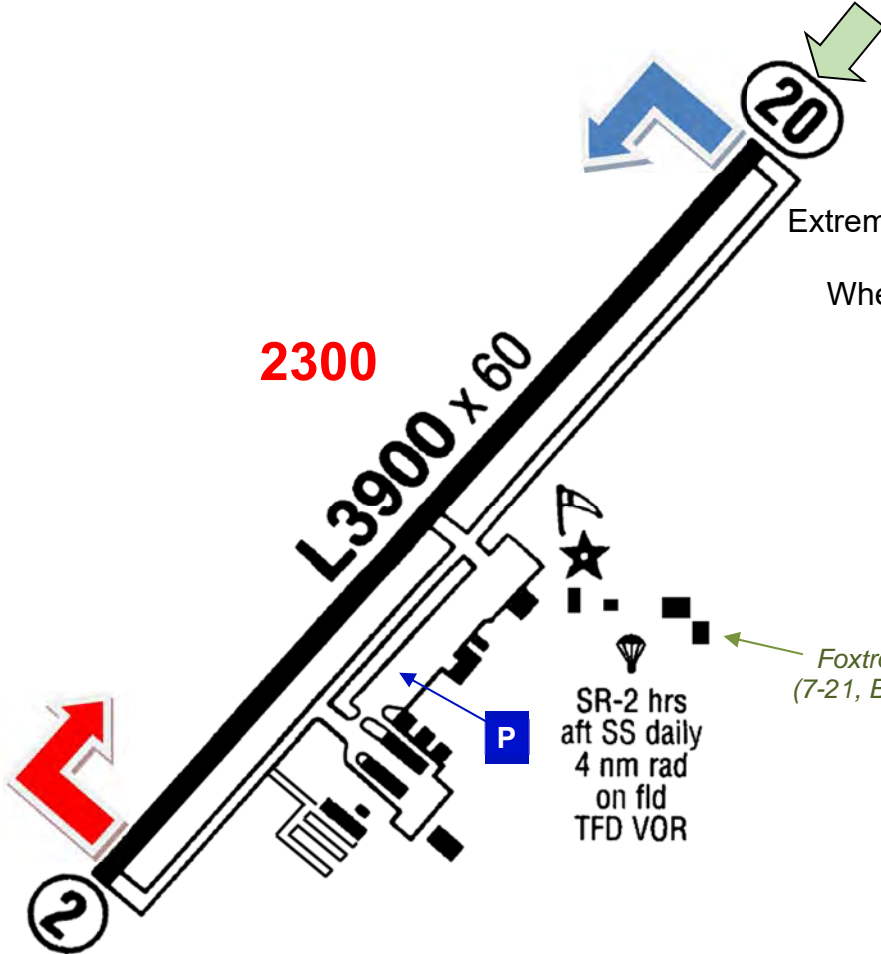
Do Not Overfly A/P

Extremely Heavy Parachute Jumping E of A/P SR-SS

When Winds ≤ 10 kts Land Rwy 20 and T/O Rwy 2

2300

L3900 x 60



SR-2 hrs
aft SS daily
4 nm rad
on fld
TFD VOR

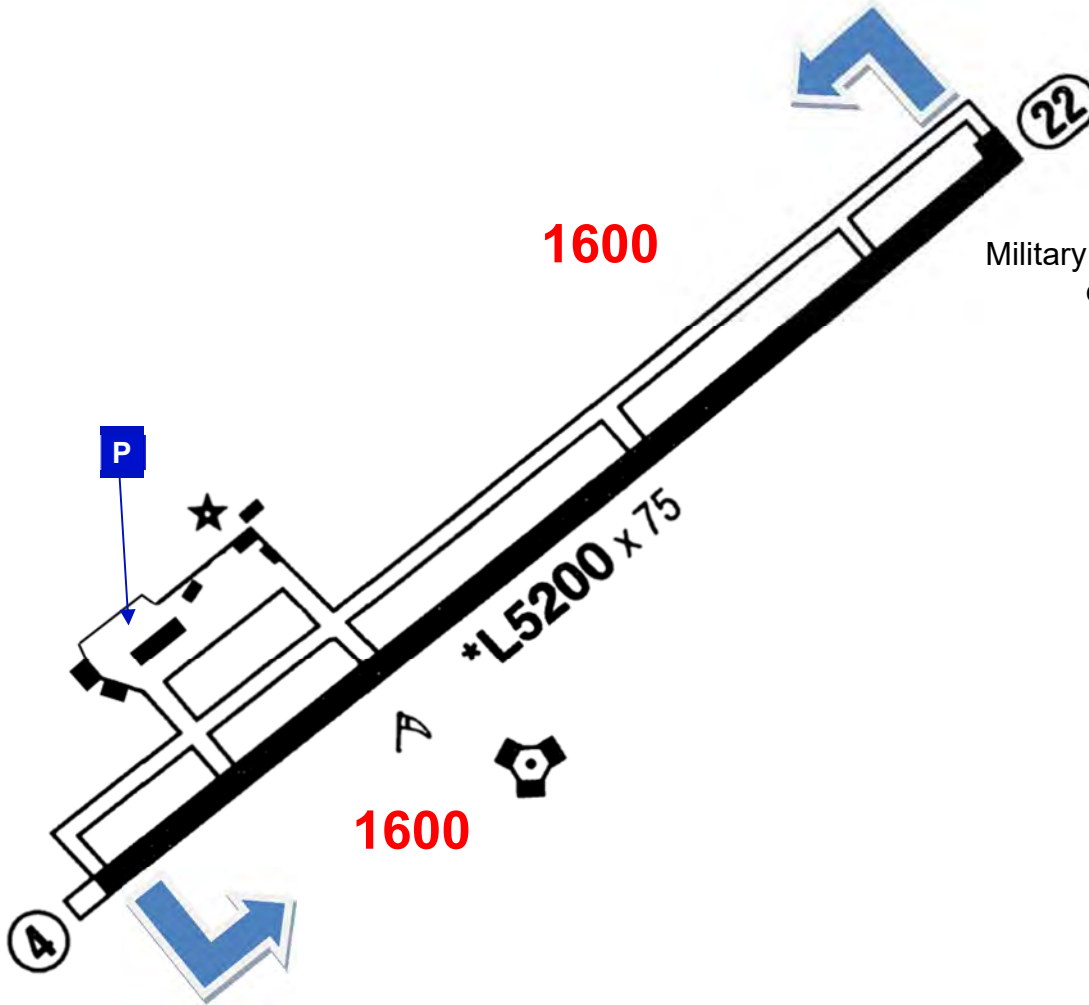
*Foxtrott Cafe
(7-21, Bar 11-24)*

788 ft

E63

Gila Bend Muni

CTAF 122,8*



Military A/C 005°-210° at appr. 2800 ft
call Gila Bend Aux AAF 127.75
for position & intentions

1273 ft

E68

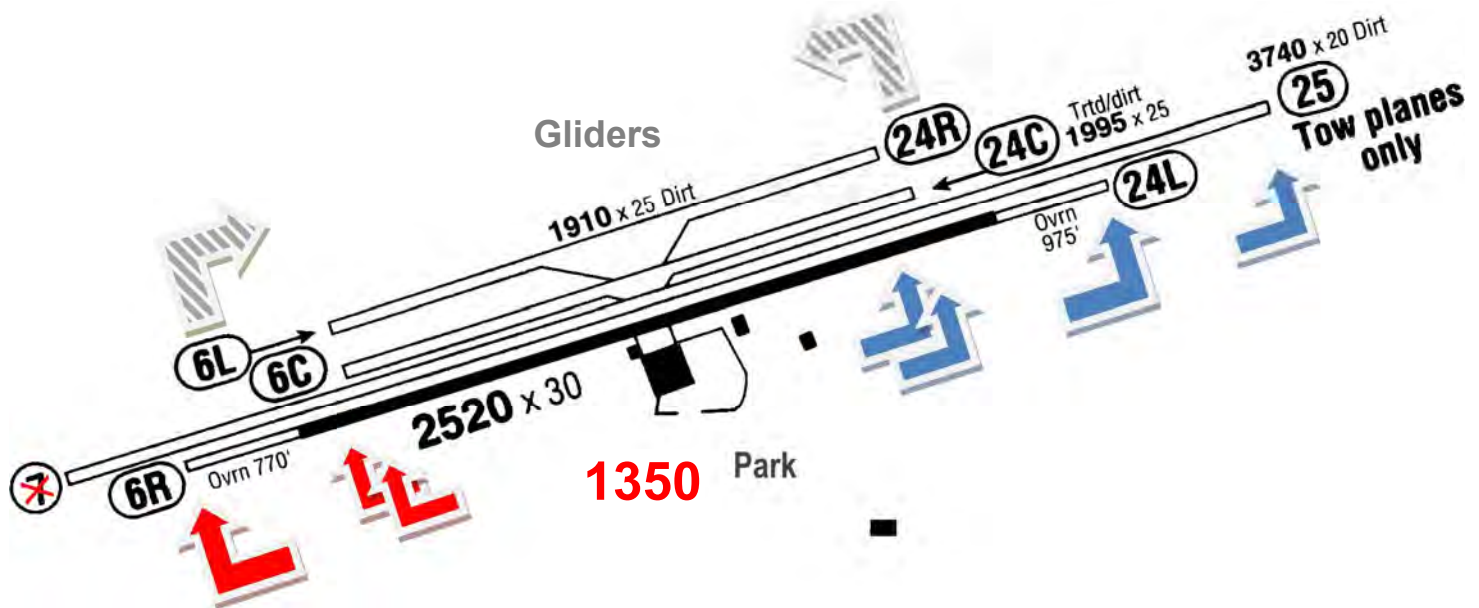
Estrella Sailport

CTAF 122,9

Paved Rwy for T/O only!

PPR: 520-568-2318

Powered Acft are Reqd to Use Rwy not in Use by Gliders



1394 ft

FFZ

Falcon Fld, Mesa

ATIS 118,25

TWR 124,6*^C

May 14 - Aug 15: 12:30-4 UTC

Else 13-4 UTC

GND 121,3

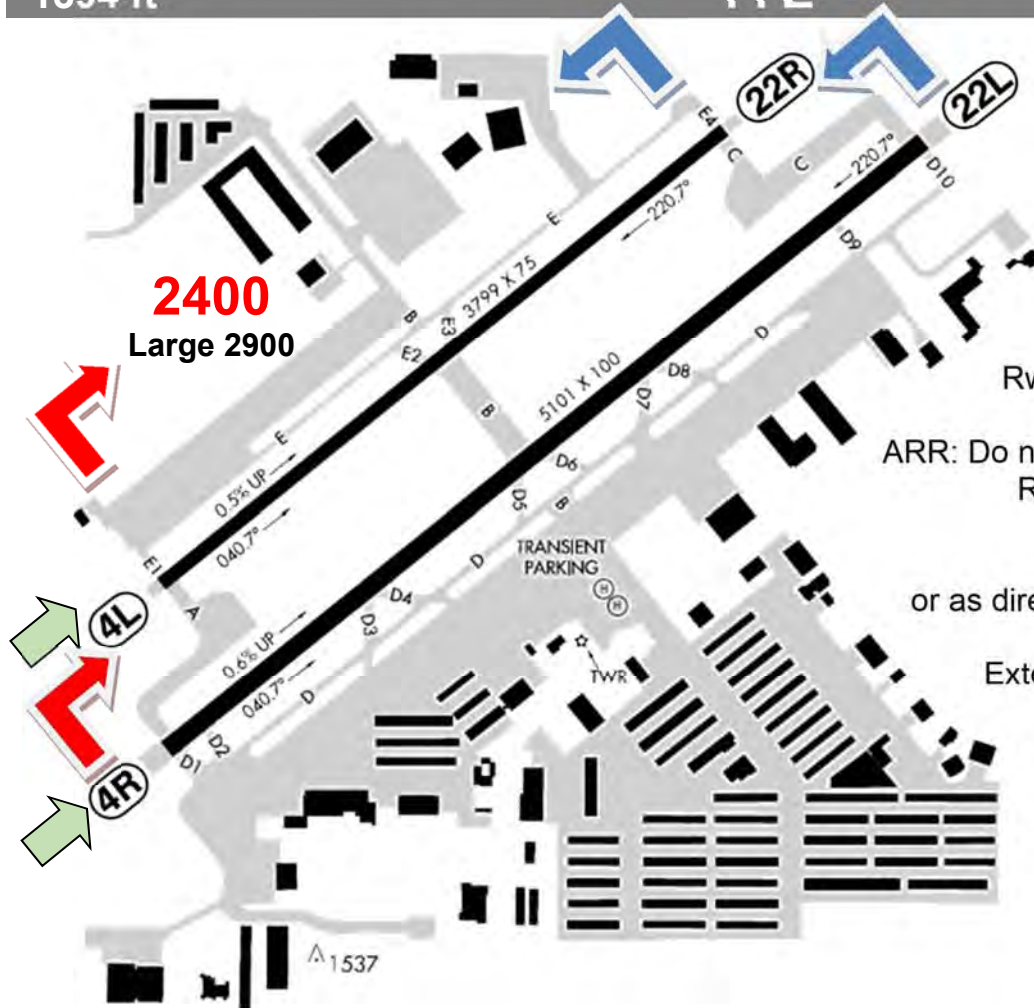
Birds, Coyotes, Wildlife

Rwy 4L/22R closed when Twr closed

ARR: Do not mistake Boeing Heliport for Rwy
Rwys 22L/R: PAPI glide path is 4,0°

DEP 4R/22L: Rwy Hdg for 3 NM,
or as directed, to avoid Rwy 4L/22R pattern

Extensive Flight Training 22-5:30 UTC
(uses Rwy 4L/22R)



2400

Large 2900



4L

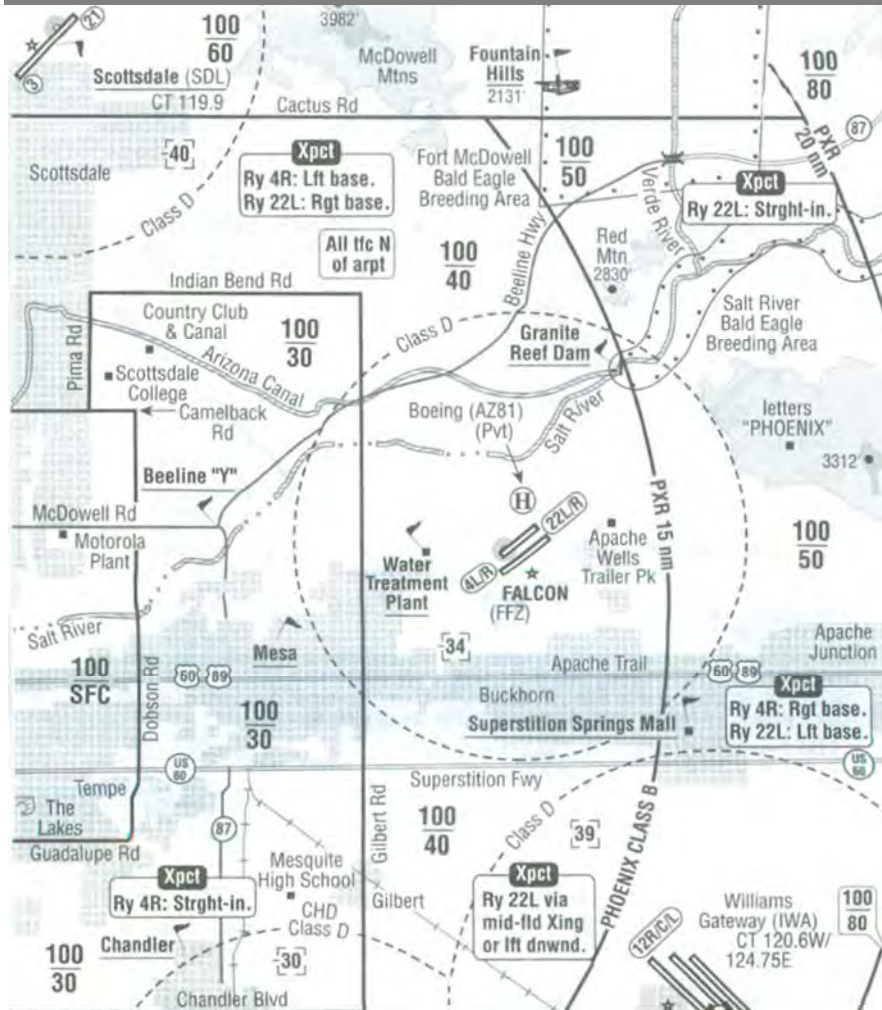
4R

22R

22L

A1537

FFZ Area



Do Not Mistake Boeing Heliport 1 NM N

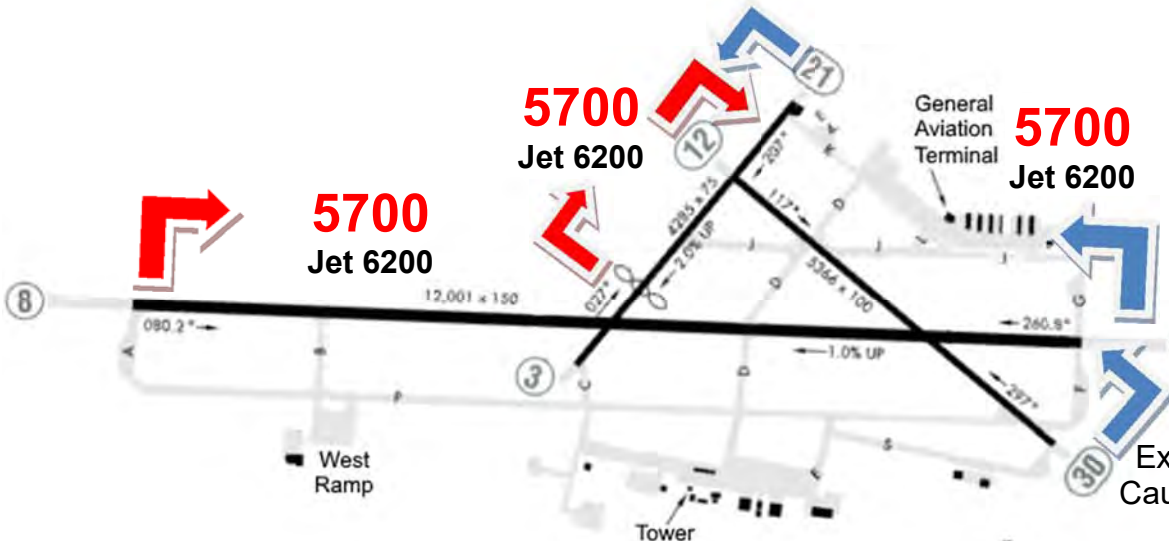
Rising Terrain NE
unlighted mountain 5 NM E

Turb < 500 ft AGL near Ground Test Site
1.5 NM N of A/P

4719 ft

FHU

Sierra Vista Muni 'Libby'



ATIS 134,75
ASOS 119,675
TWR 124,95*^C
GND 121,7

ILS 26 109,9

Birds, Deer at night
 Ext. jet training, Helicopters
 Caution: Wind Shear on App

UAV Ops; expect Possible Delays

Libby Base Ops Mo-Fr 7-6 UTC exc. Hol, OT 72 hr PPR

Unmanned Aircraft (UAV) E & W (GND-7000 ft) when CTR active

Manned A/C & UAV not authorized in same Pattern (T/O and Full Stop Ldg authorized)

ARR: manned A/C may follow UAV on Final

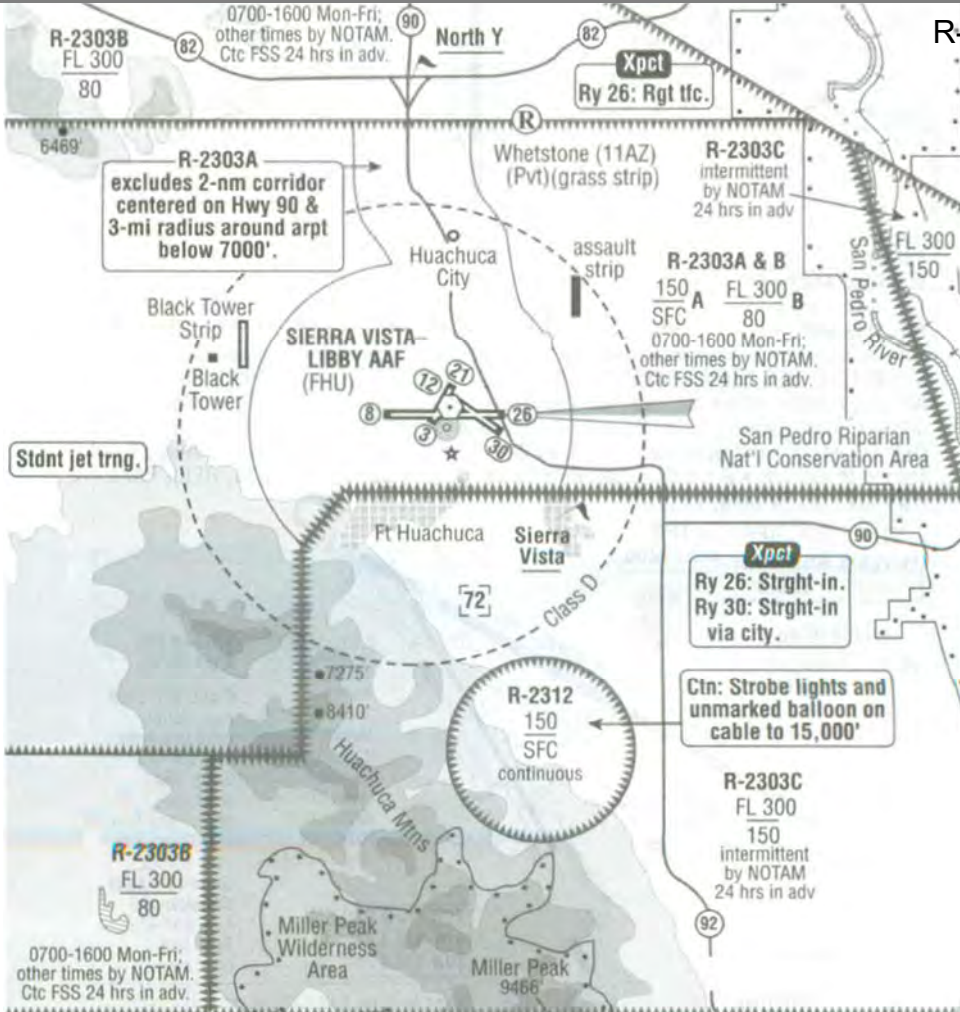
ARR: if R-area(s) active call Twr early (Mt Fagan, Apache Peak Benson, Tombstone, etc.)

Enter via North Y < 7000' (to avd R-areas)

Taxi to S (mil) side of fid only PPR

DEP: max. 5700 ft until Dep End of Rwy

FHU Area



R-2303A + -B normally active Mo-Fr 7-17
(other times by NOTAM)
R-2303C + R-2312

7014 ft

FLG

Flagstaff Pulliam

ATIS 125,8

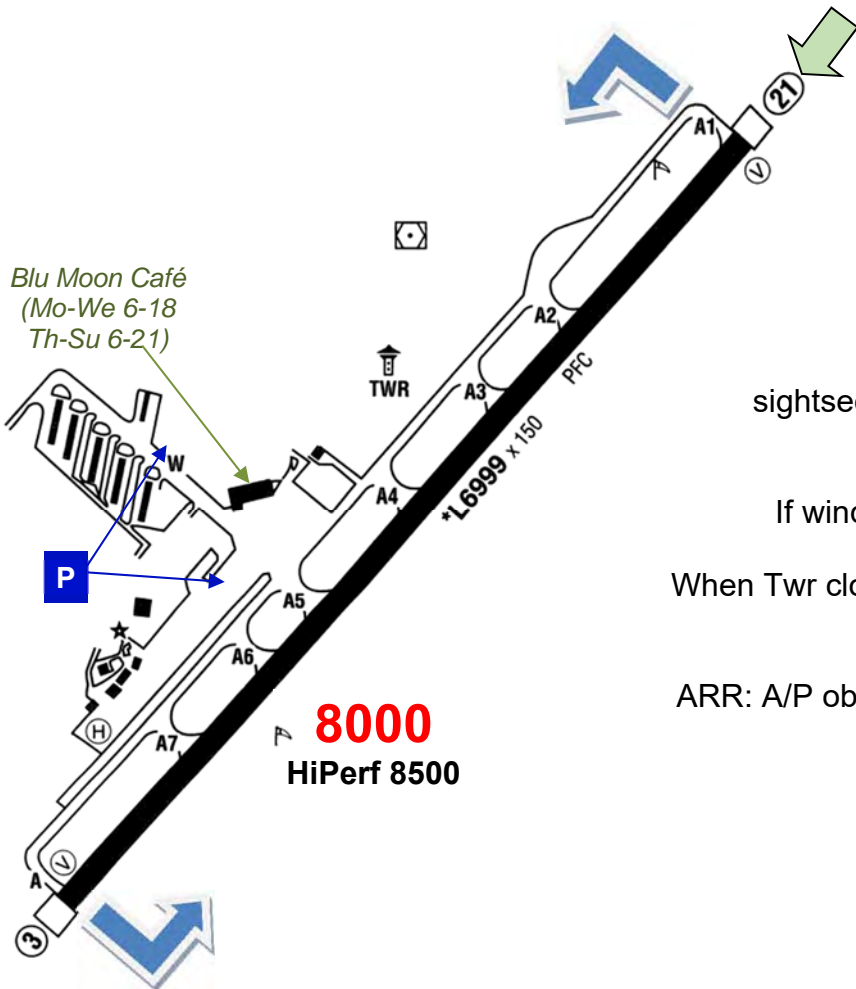
TWR 134,55*^C

6-21 LT

1.10. - 31.3.: 7-19 LT

GND 121,9

ILS 21 110,5



Mountains N of A/P
Deer & Elk

sightseeing A/C at Oak Creek Canyon & Woody Ridge

Avoid Village 3 NM S

If wind > 10 kts Windshear & Turb. at both Rwy Ends

When Twr closed A/P may be closed during Snow Removal,
for Snow-Removal-Activity call 134,55

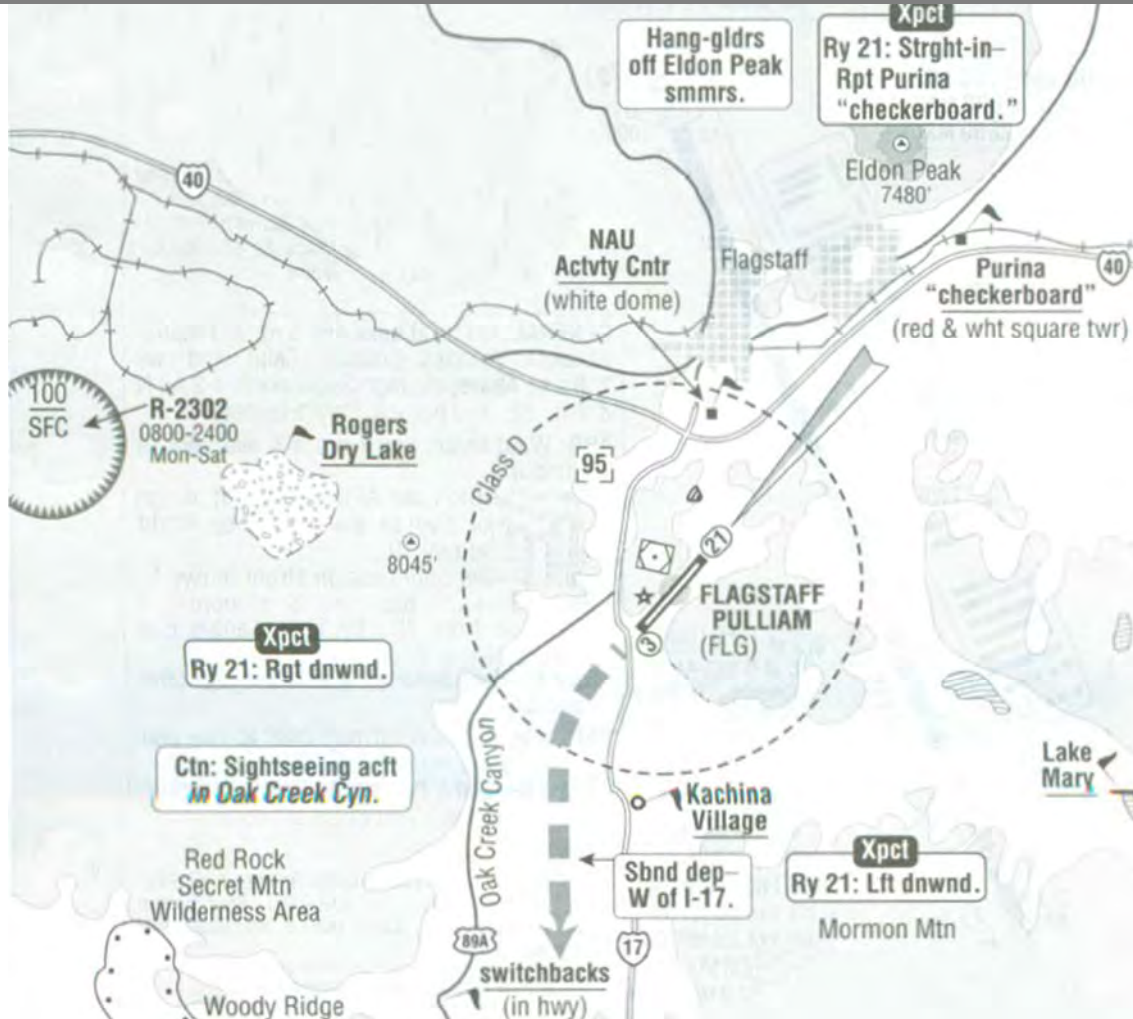
ARR: A/P obscured by trees; look for white dome 2 ½ NM N

Twr uses I-17 to separate N & S t/c

ARR from S: stay E of I-17

DEP to S: stay W of I-17

FLG Area



1071 ft

GEU

Glendale Muni

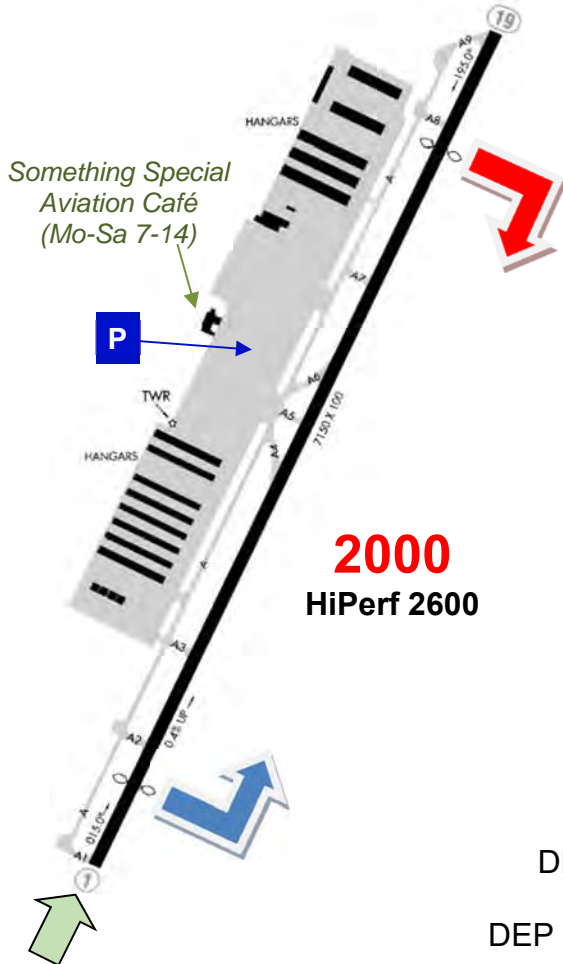
ATIS 119,425

TWR 121,0*C

Mo-Fr 6-20:30 LT

Sa-Su 7-19 LT

GND 118,0



Avoid Noise Sensitive Areas N, S, SE
 No touch & go 22-06 LT
 Coyotes & Birds
 Heavy Mil. Jet Traffic 5 NM W

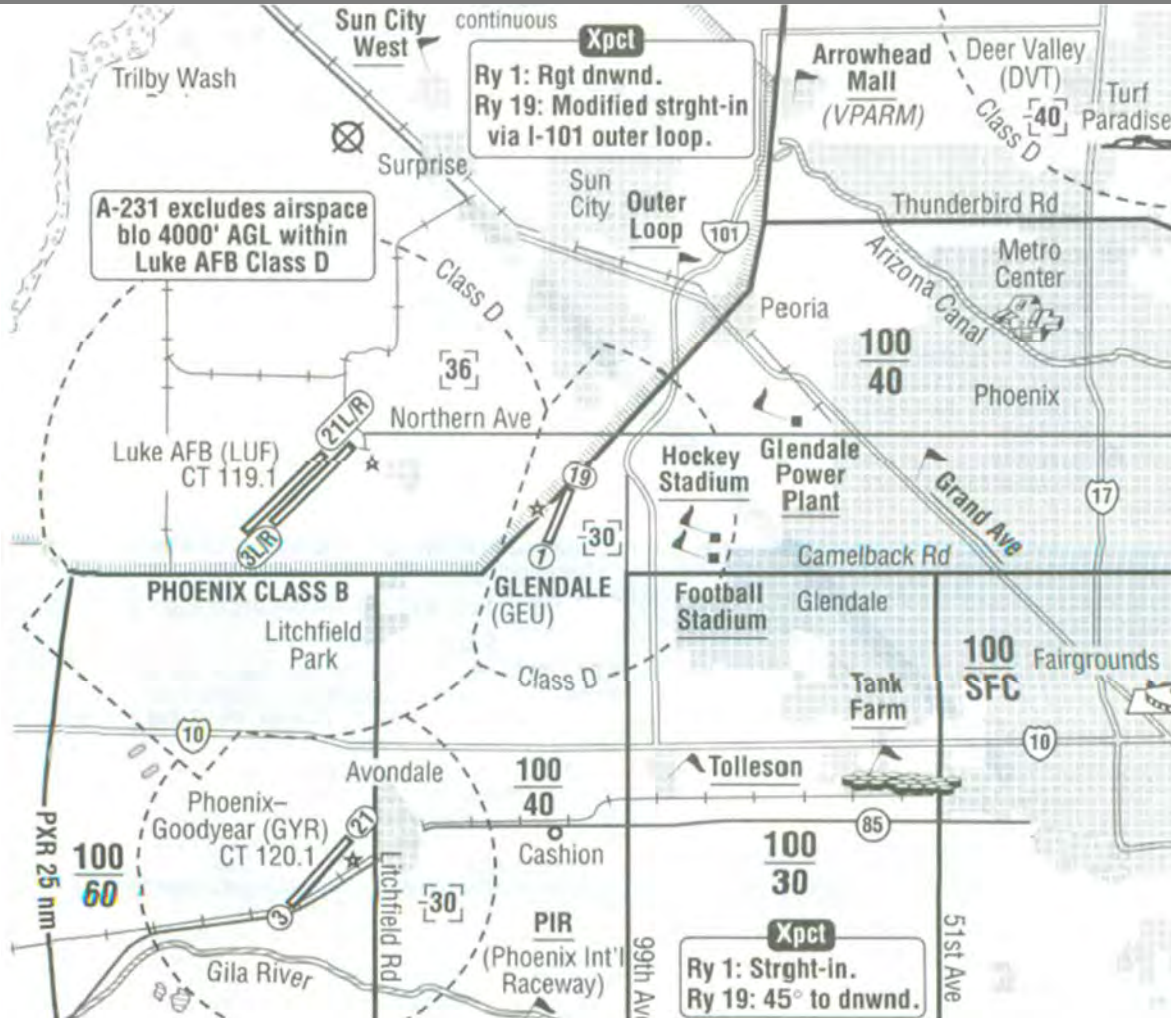
ARR: Wind favors Rwy 1 morn & eve, Rwy 19 afternoon
 ARR from W: call Luke APC
 Twr may assign overflight of Rwy to downwind or extended L downwind Rwy 19
 ARR 01 from S: Twr might assign straight-in

if possible keep crosswind & base close
 Rwy 19: keep base leg S of homes.
 from NE: if straight-in fly final at angle, E of homes
 Rwy 1: keep base leg N of 2nd bridge and homes

DEP 01: turn right Hdg 040° at rwy end to curve in Fwy & follow Fwy

DEP 19: Rwy Hdg to 2nd road before E-bound turn; avoid GYR Class D

GEU Area



969 ft

GYR

Phoenix Goodyear

ATIS 118,35

TWR 120,1^C

6-21 LT

GND 121,7

SEP 2000
Else 2500

SEP 2000
Else 2500

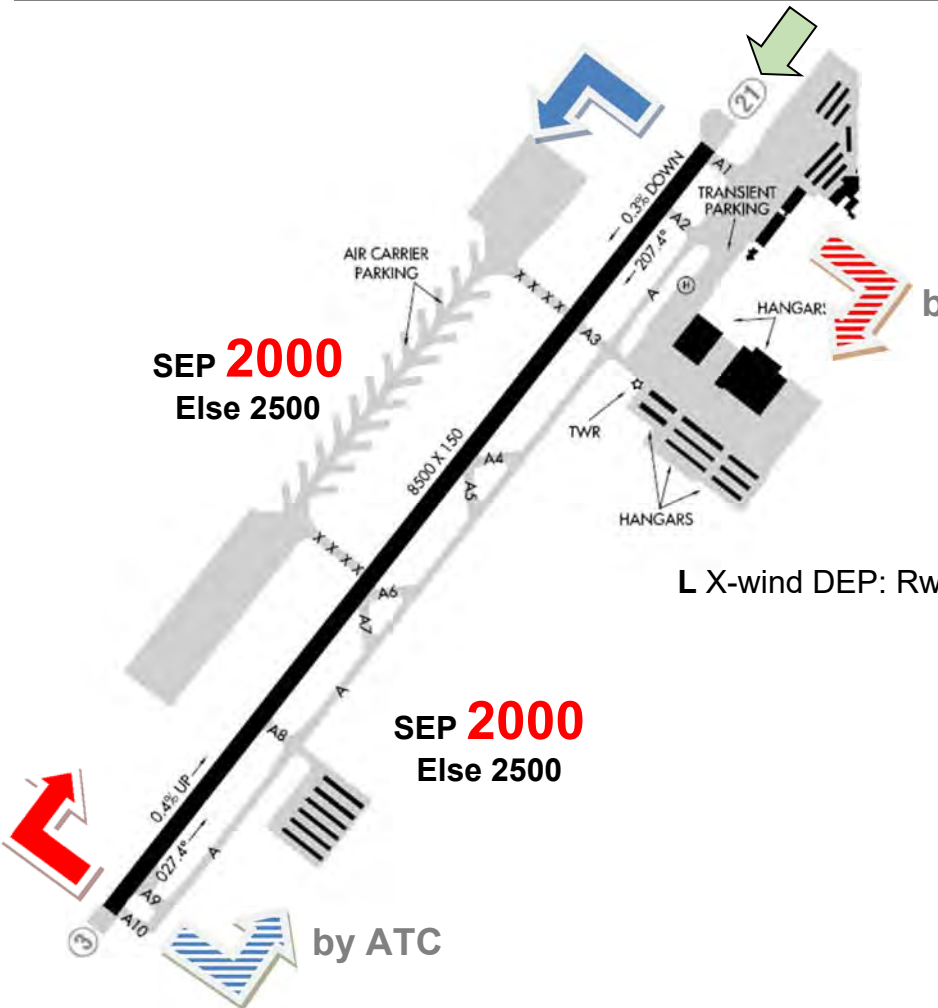
by ATC

21-6 LT No touch & go

ARR 21: keep base leg close
(over field boundary)

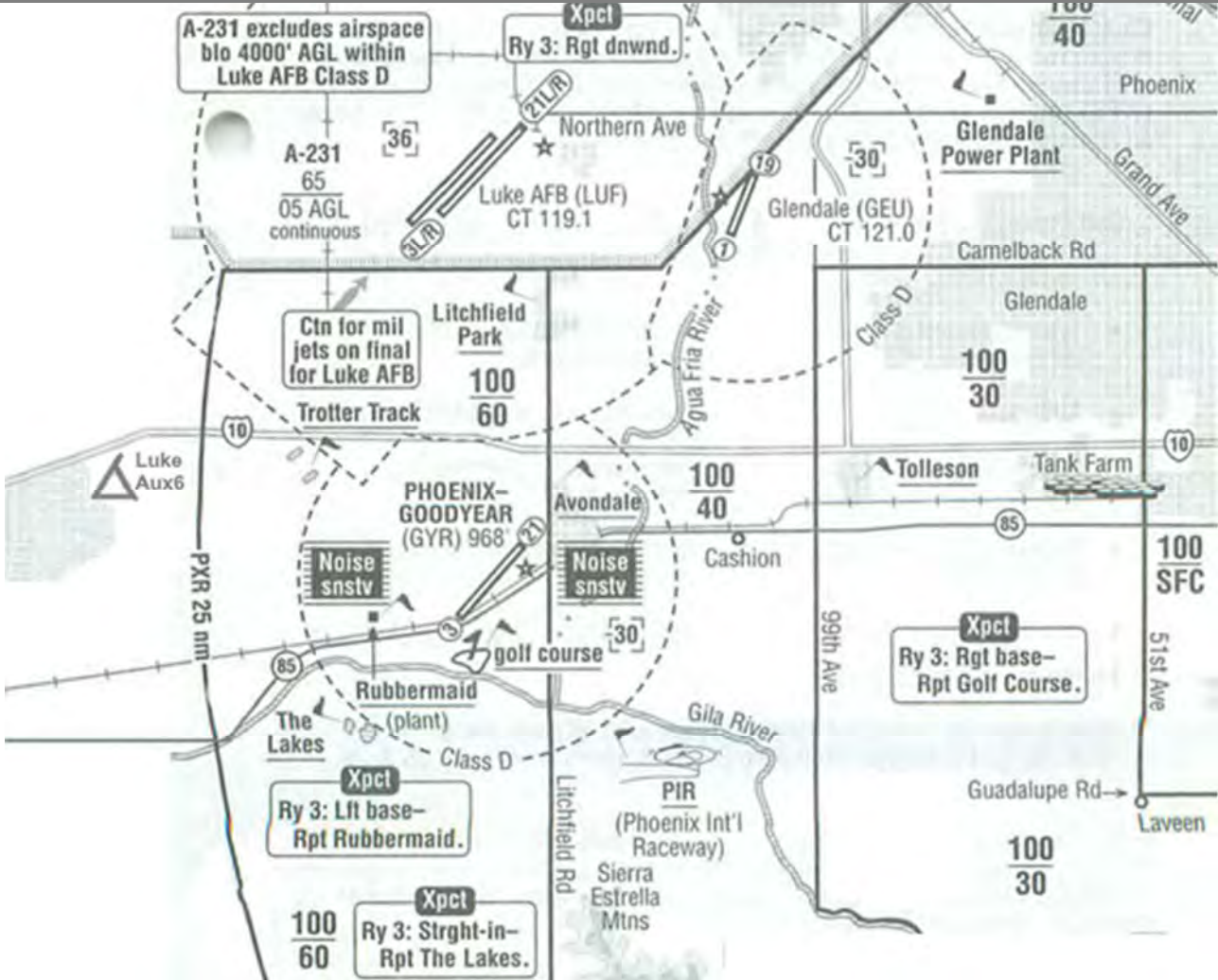
RWY 3 R X-wind DEP:
Rwy Hdg to 400 ft prior turn

L X-wind DEP: Rwy Hdg to 2000 ft or Litchfield RD prior turn



GYR Area

Class B
not correct



2492 ft

HND (HSH)

Henderson Executive

ATIS 120,775
TWR 125,1^{*C}
 6-20 LT
GND 127,8

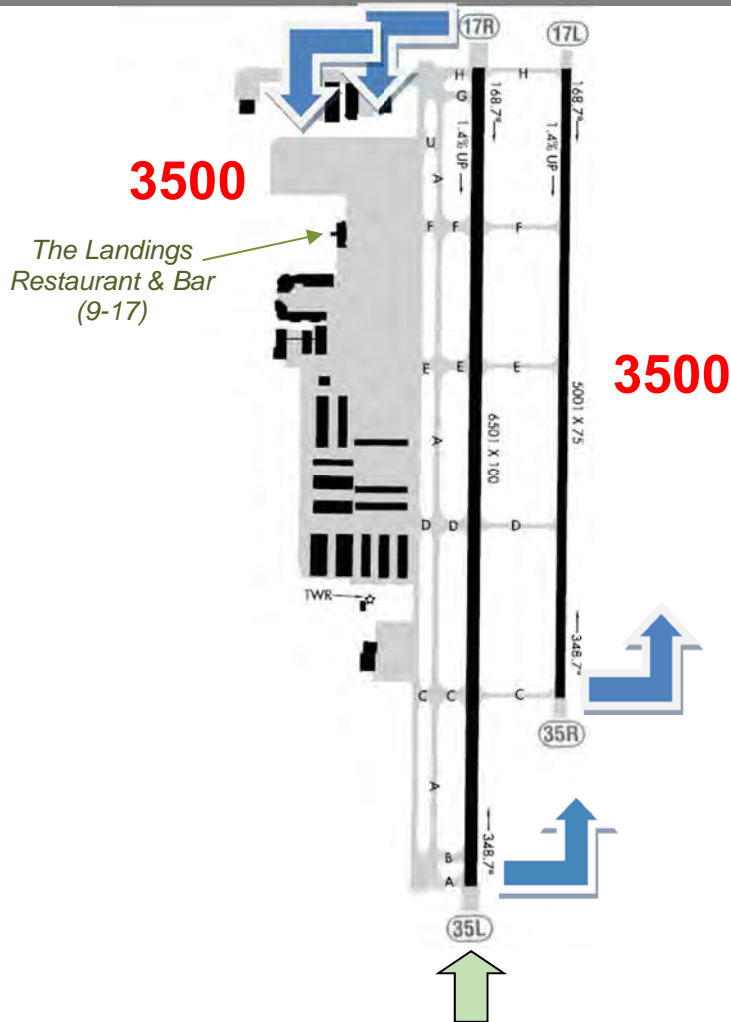
Helicopters
 Air Tours to/from Grand Canyon arr/dep SE days

PAPI 35L/R unusable beyond 3.3 NM
 (do not provide obstacle clearance)

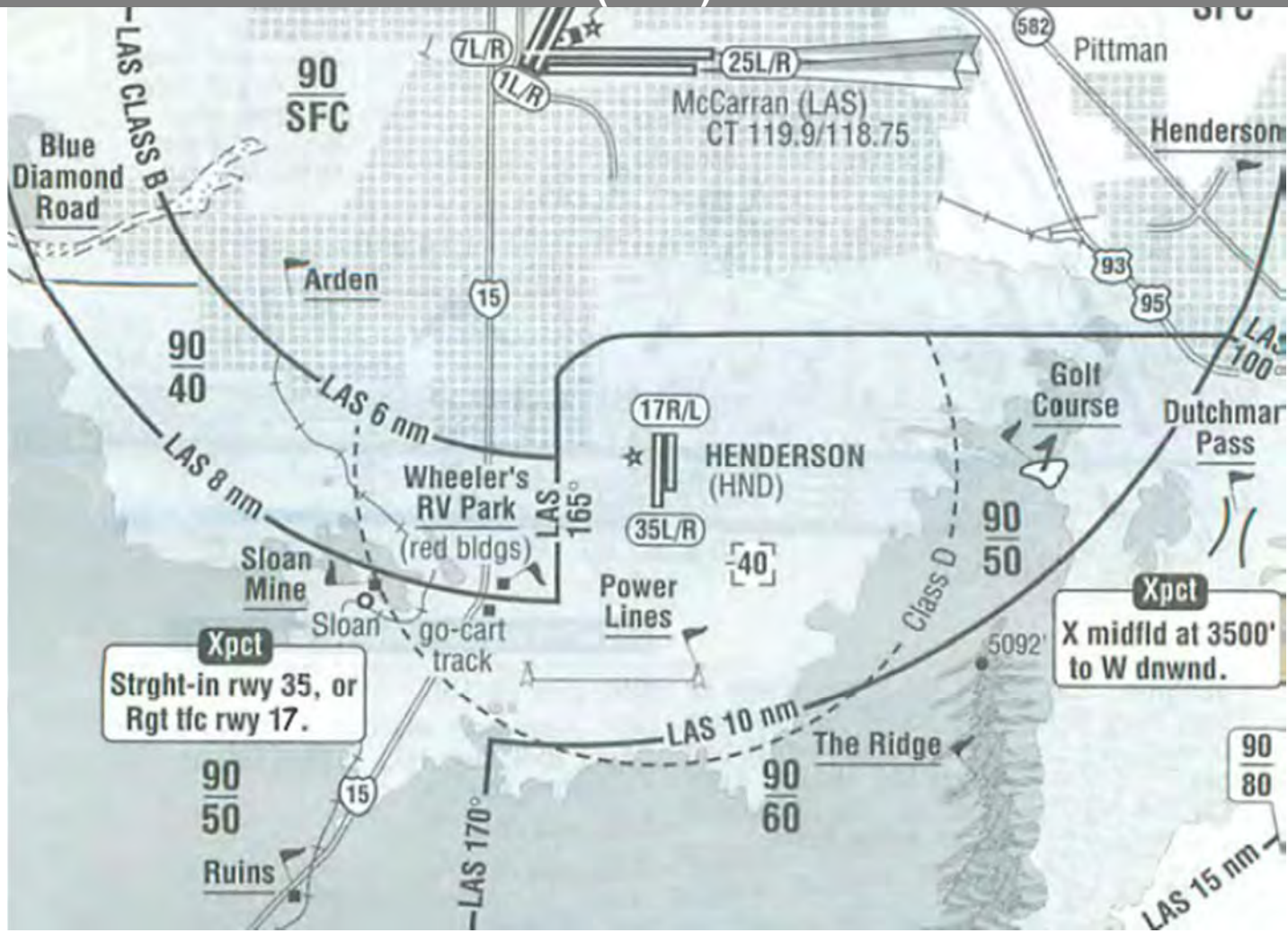
Avoid homes E

Taxis avail. at A/P, call 122,95 before approach

If Twr closed DLV 725-200-4432 (LAS App)



HND (HSH) Area



3448 ft

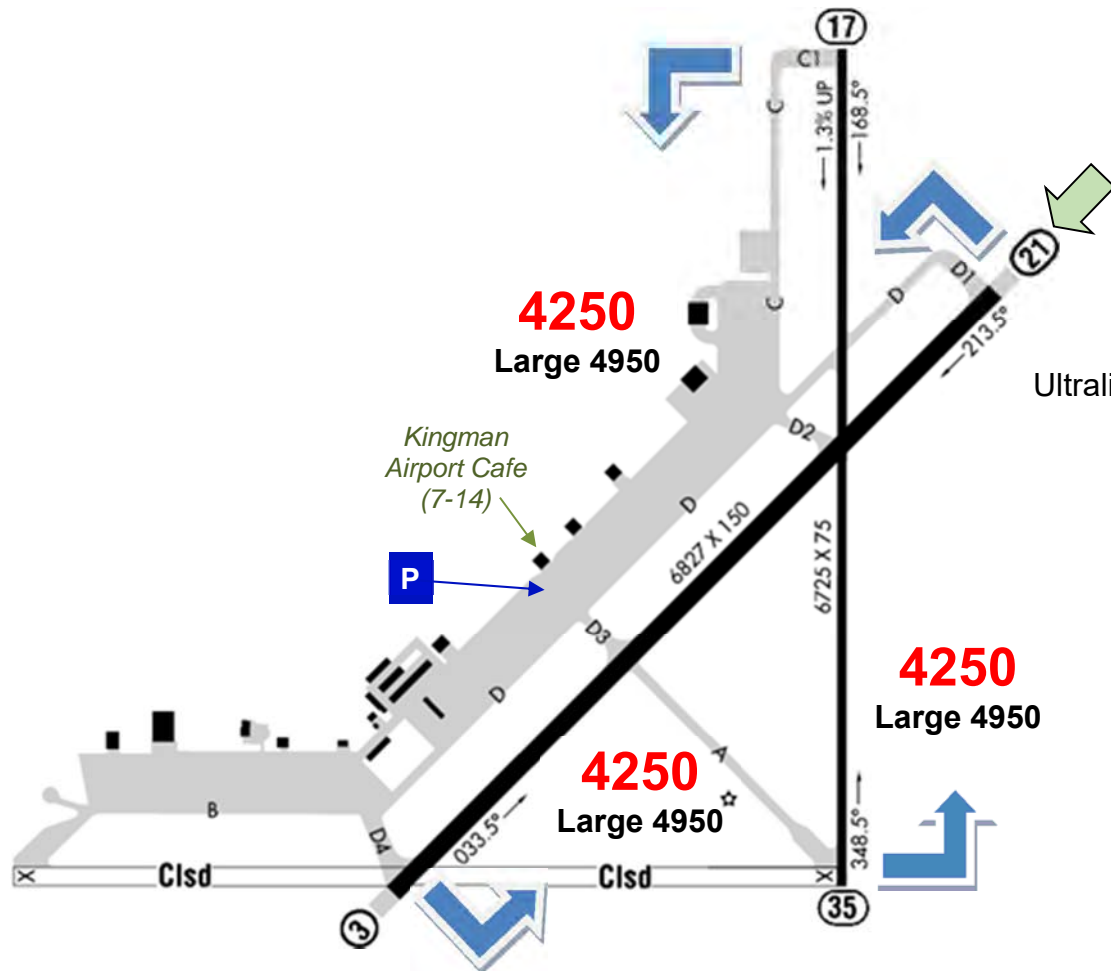
IGM

Kingman

ASOS 119,275
CTAF 122,8*

ARR: no straight-in

Parachute
Ultralight, Model Airplane SW of A/P



213 ft

NYL (YUM)

Yuma McAs/ Intl

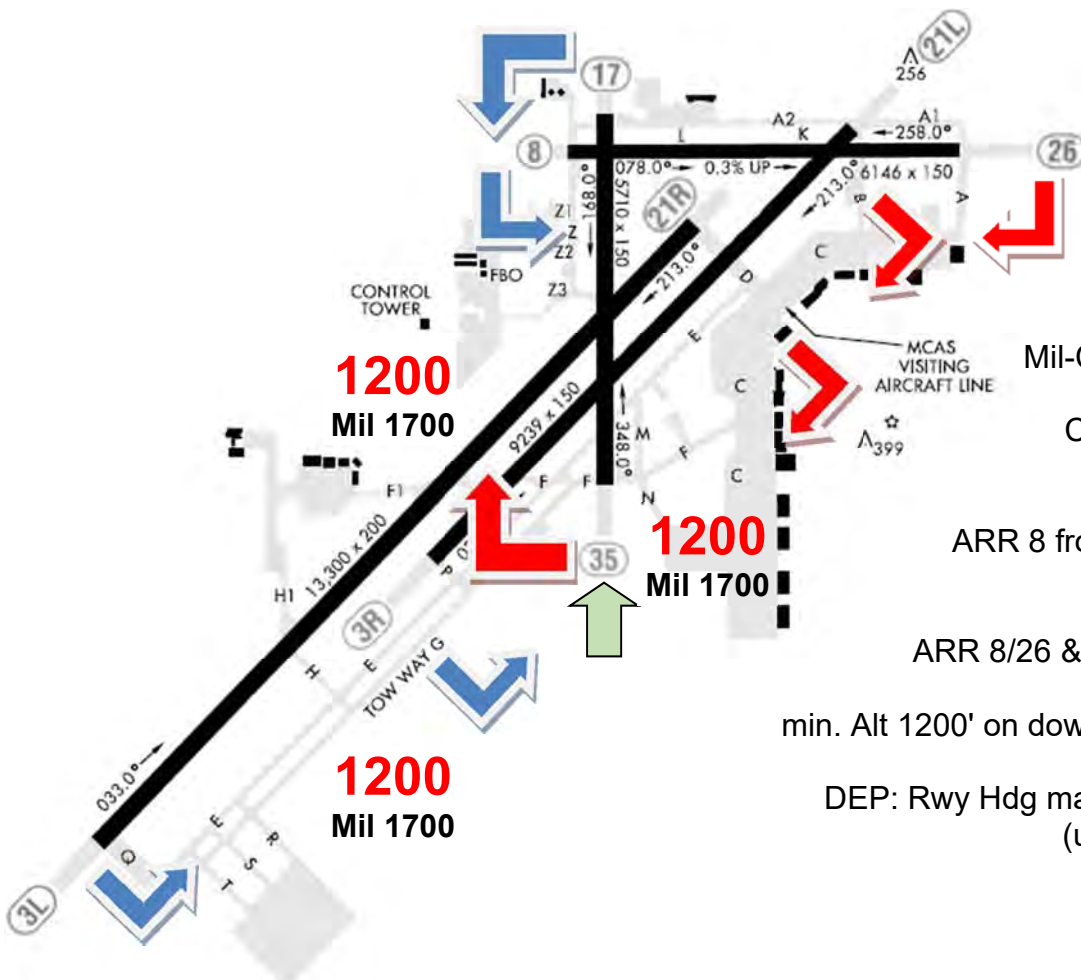
ATIS 118,8

TWR 119,3*^C

14-05:30 UTC exc. HOL

GND 121,9

ILS 21R 108,3



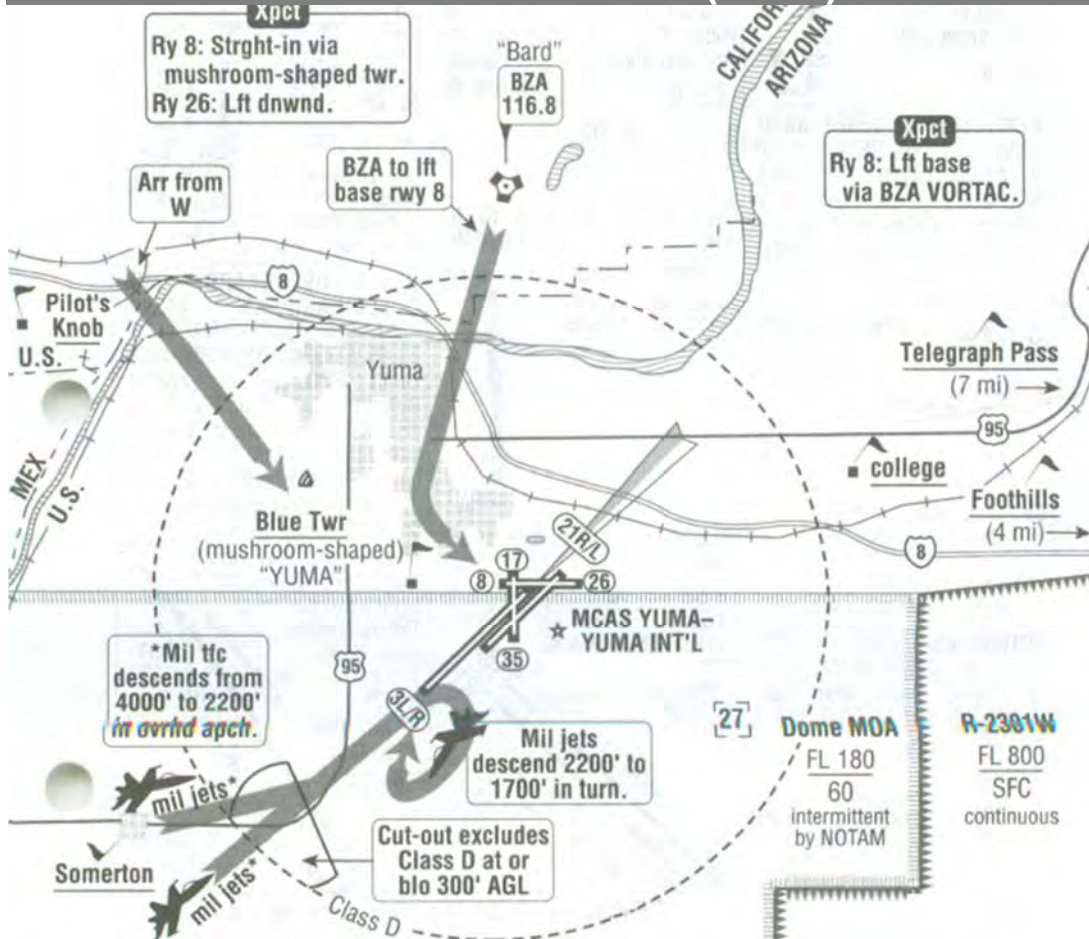
Birds, Crop dusters, Helicopter
 Mil-Civil joint use, Air-carrier testing
 Mil & jets use Rwy 3/21 L+R
 Civil A/C use Rwys 17/35 & 8/26
 Civil & mil patterns overlap

ARR 8 from S: avoid Rwy 3 App corridor
 ARR 35: Straight-in poss

ARR 8/26 & 17/35: enter Class D at 1200 ft
 (to avd jets at 1700')
 min. Alt 1200' on downwind untill past Rwy 3/21 L+R

DEP: Rwy Hdg max. 1200 ft until clear of Class D
 (unless Twr approves otherwise)
 Initial 3500 ft at 6 NM

NYL (YUM) Area



check R-2507 and R-2301W
Safety of Flight Range
Notification/Restrictions
Mil Opr 1400-0530z

Extv Jet Trng Opr on UHF
Exer increased Vigilance

Mil jets over Somerton
4000 ft → 2200 ft, then
at Rwy 3 Thr to break right
or
within 6 NM SW & NE
straight-in to Rwy 3/21 L+R

Caution: avoid Mexican
Border 7 NM W of A/P

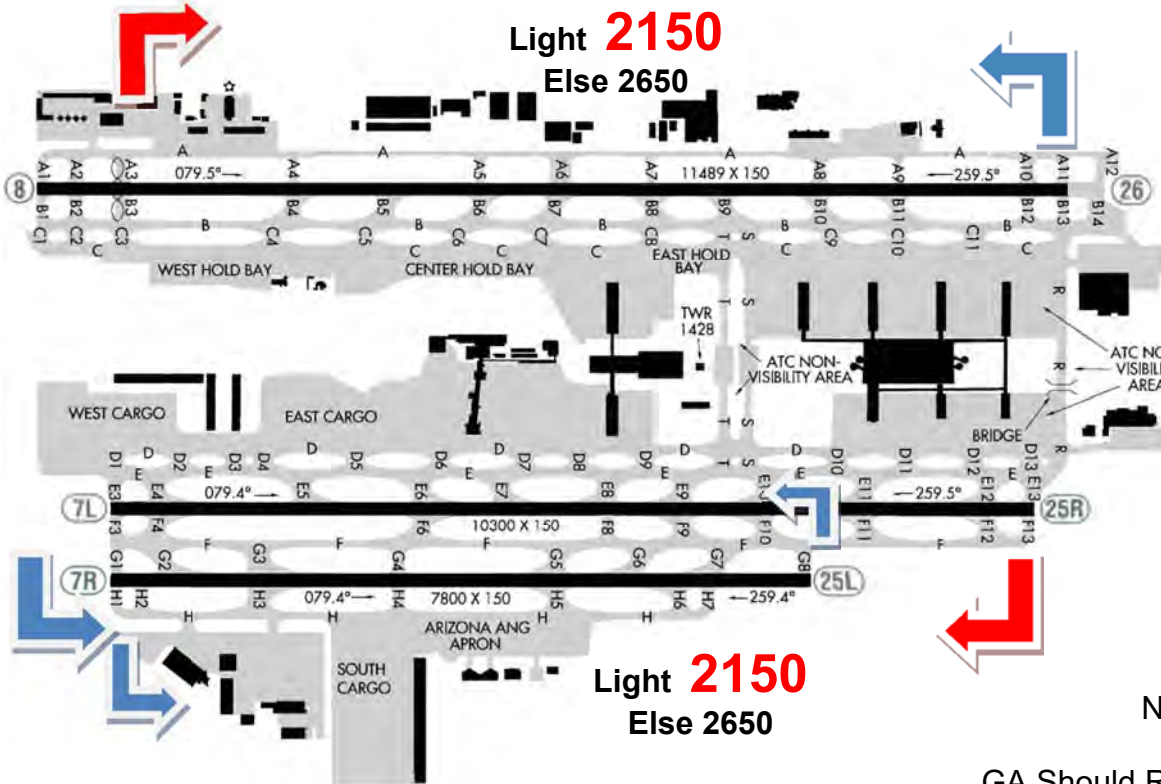
Range Notifications:

<http://www.mcasyma.marines.mil/resources/rangenotifications.aspx>

1135 ft

PHX

Phoenix Sky Harbor Intl



Light **2150**
Else 2650

ATIS 127,575

TWR 118,7 N

120,9 S

GND 119,75 N

132,55 S

ILS 7R 110,75^D

ILS 7L 111,5^D

ILS 8 111,75^D

ILS 25L 110,75^D

ILS 26 111,75^D

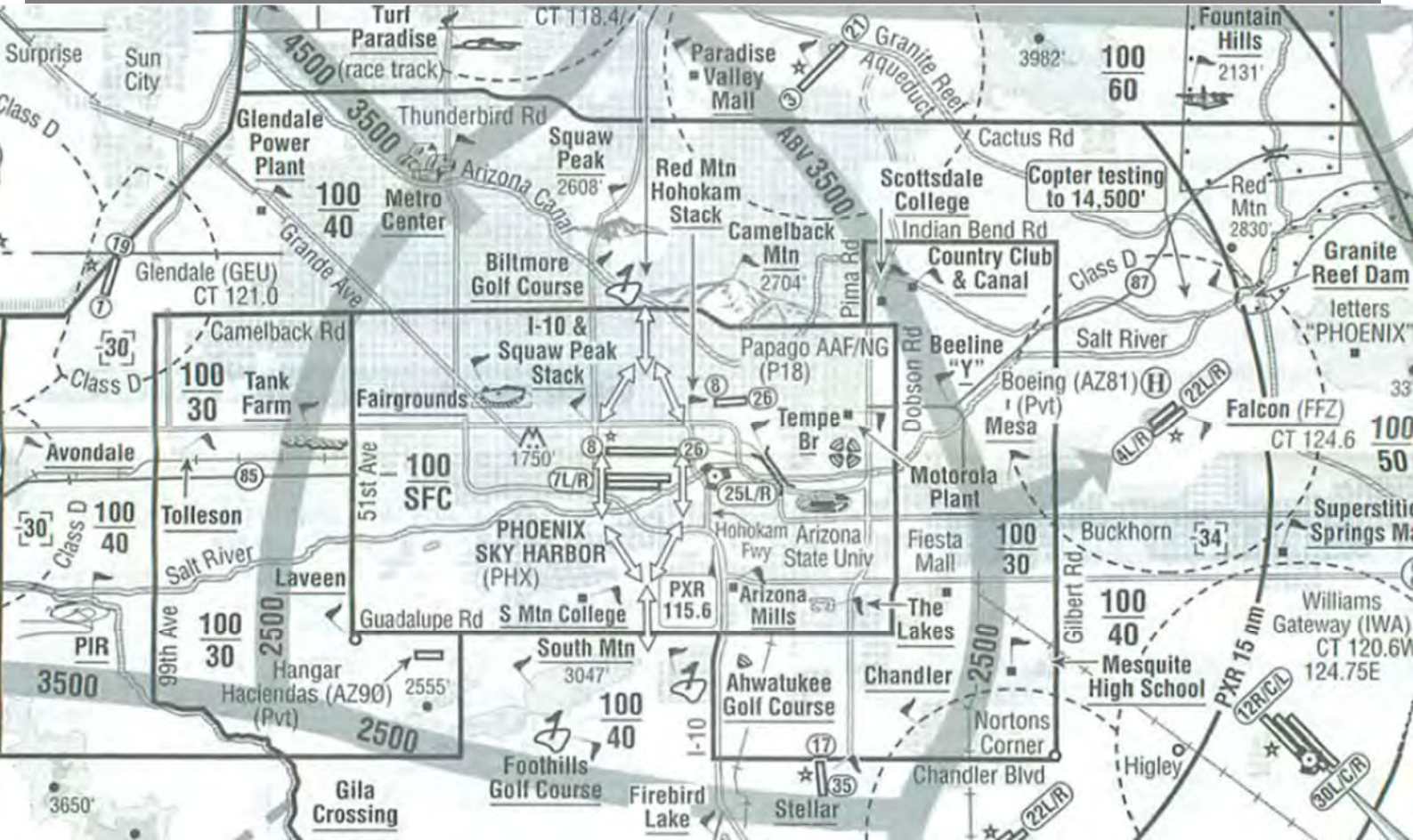
Birds

No Touch & Go 6-2230 LT

GA Should Review Arpt Safety Video:

<http://skyharbor.com/business/forpilots/safetyvideoforpilots>

PHX Area



5044 ft

PRC

Love Field, Prescott

ATIS 127,2
TWR 125,3*^C
 6-22 LT
GND 121,7

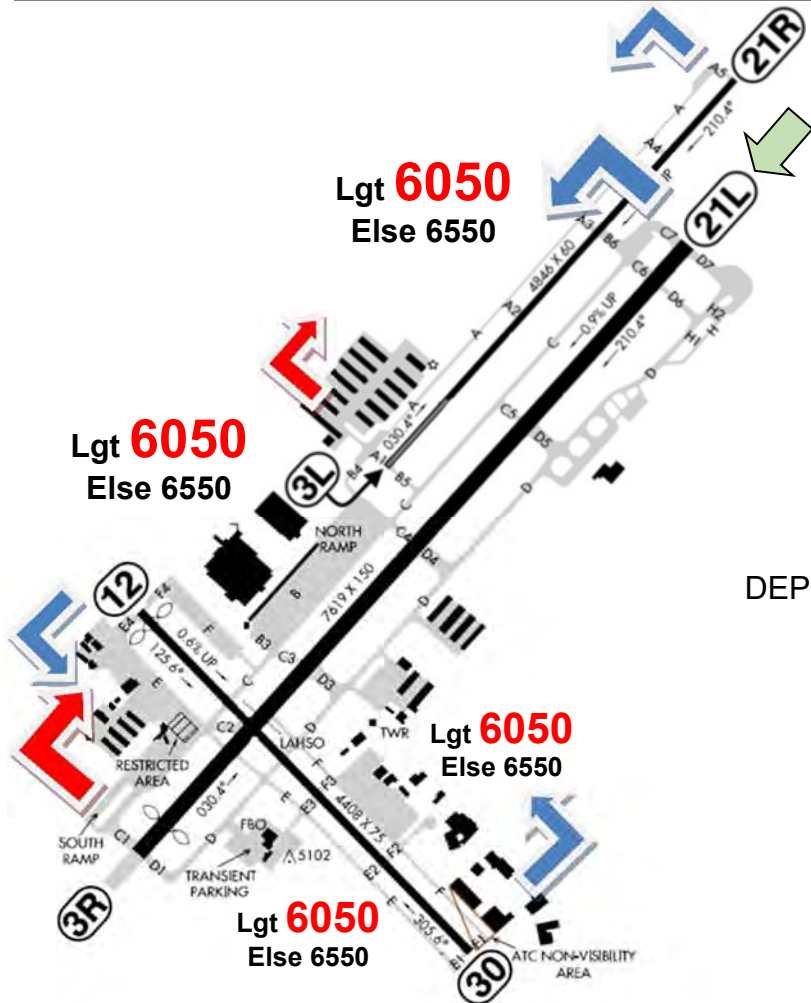
ILS 21L 108,5^D

Wildlife
 Field Conditions not Monitored 22-05 LT
Overnight Parking Fee
 20 ft Drop-Off 300 ft from Thr Rwy 12

Rwy 30 PAPI unusable Beyond 3 NM

DEP 21L: Rwy Hdg until Hwy, then immediate Left Turn

Winch Tow in use ≤ 2500 Ft AGL appr. 6 NM E
 (at Goodwin Memorial Gliderport)



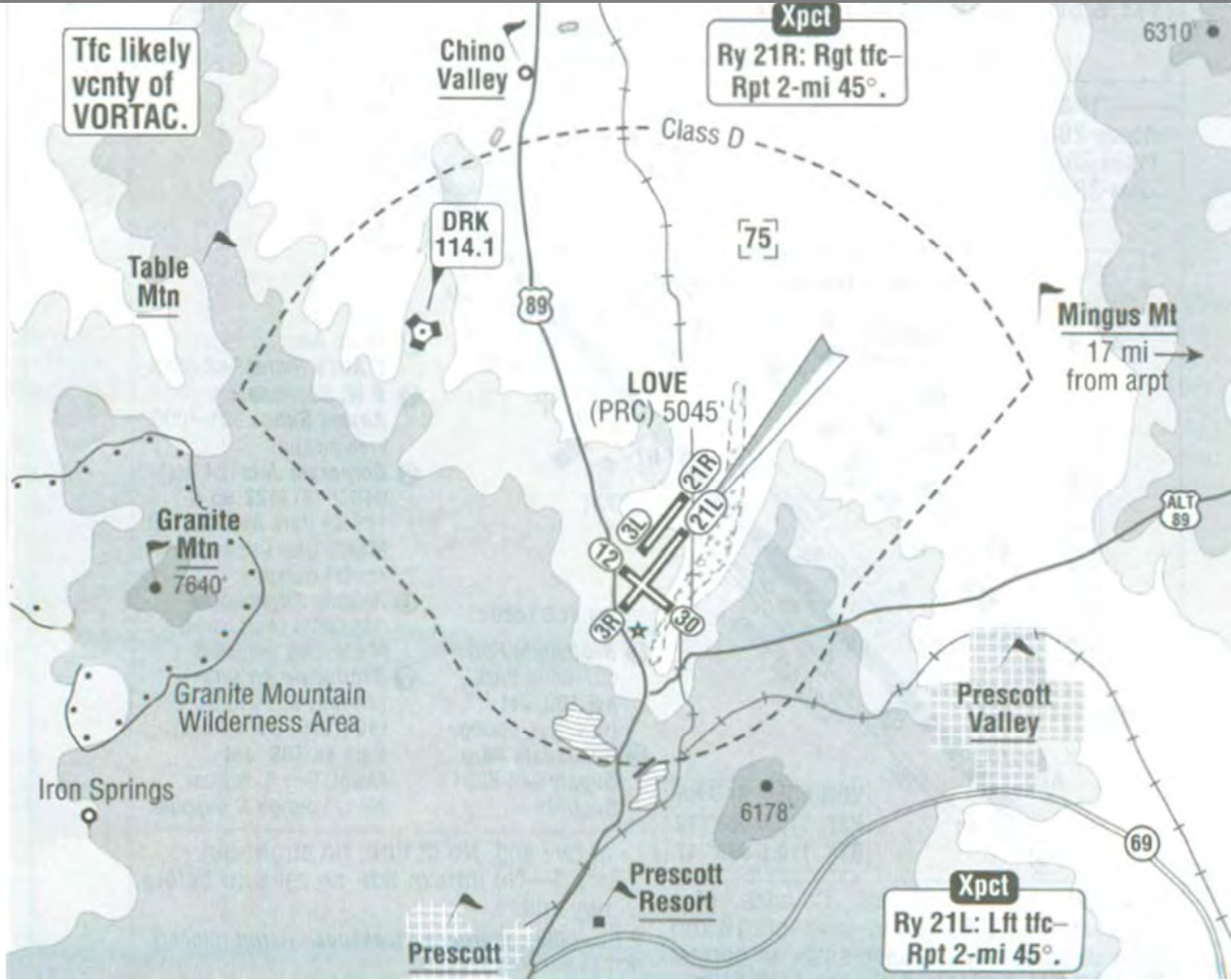
Lgt 6050
Else 6550

Lgt 6050
Else 6550

Lgt 6050
Else 6550

Lgt 6050
Else 6550

PRC Area



2418 ft

RYN

Ryan Field, Tucson

Awos 133,35

TWR 125,8*^C
6-20 LT

GND 118,2

ILS 6R 111,1

Frequent Practice ILS 6R
Afternoon Winds usually favor Rwy 24L/R
Use Landing Lights in Pattern

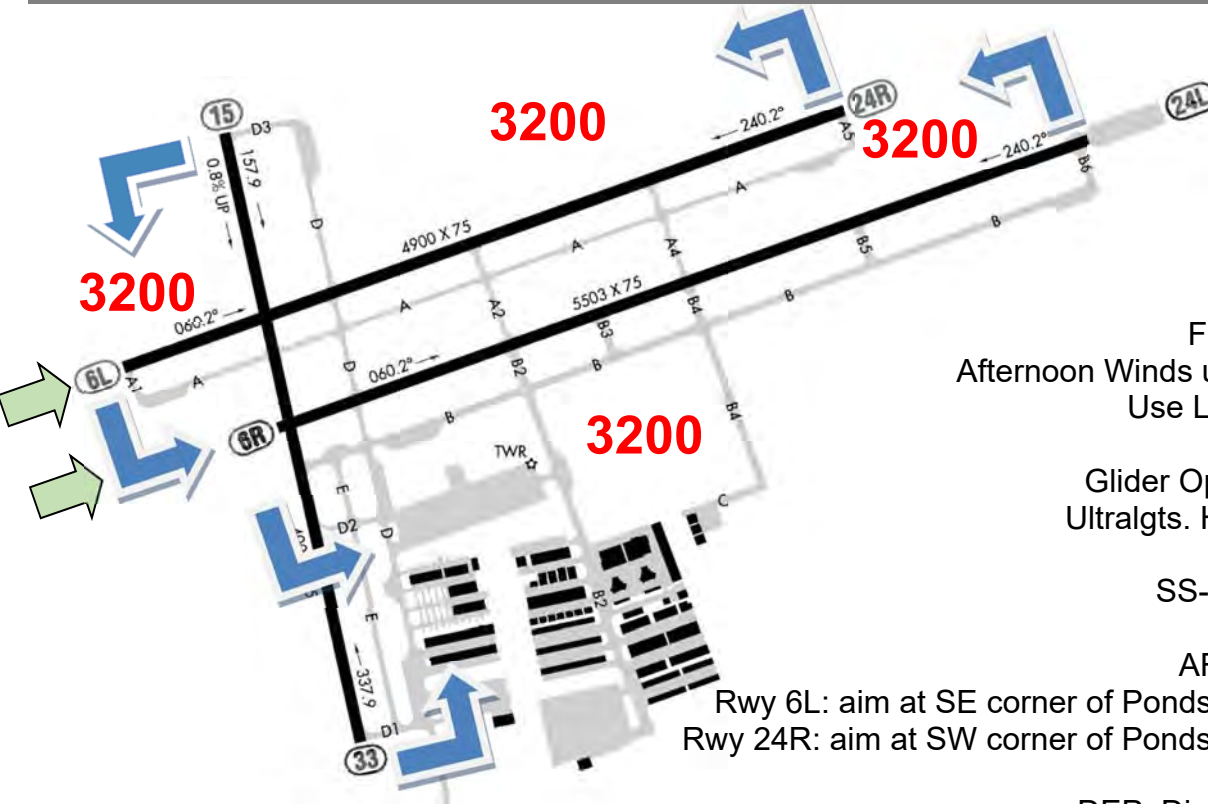
Glider Operations NW of Tucson
Ultralghts. Hlcptrs. Fire-fighting acft

SS-SR: Rwy 6L/24R closed

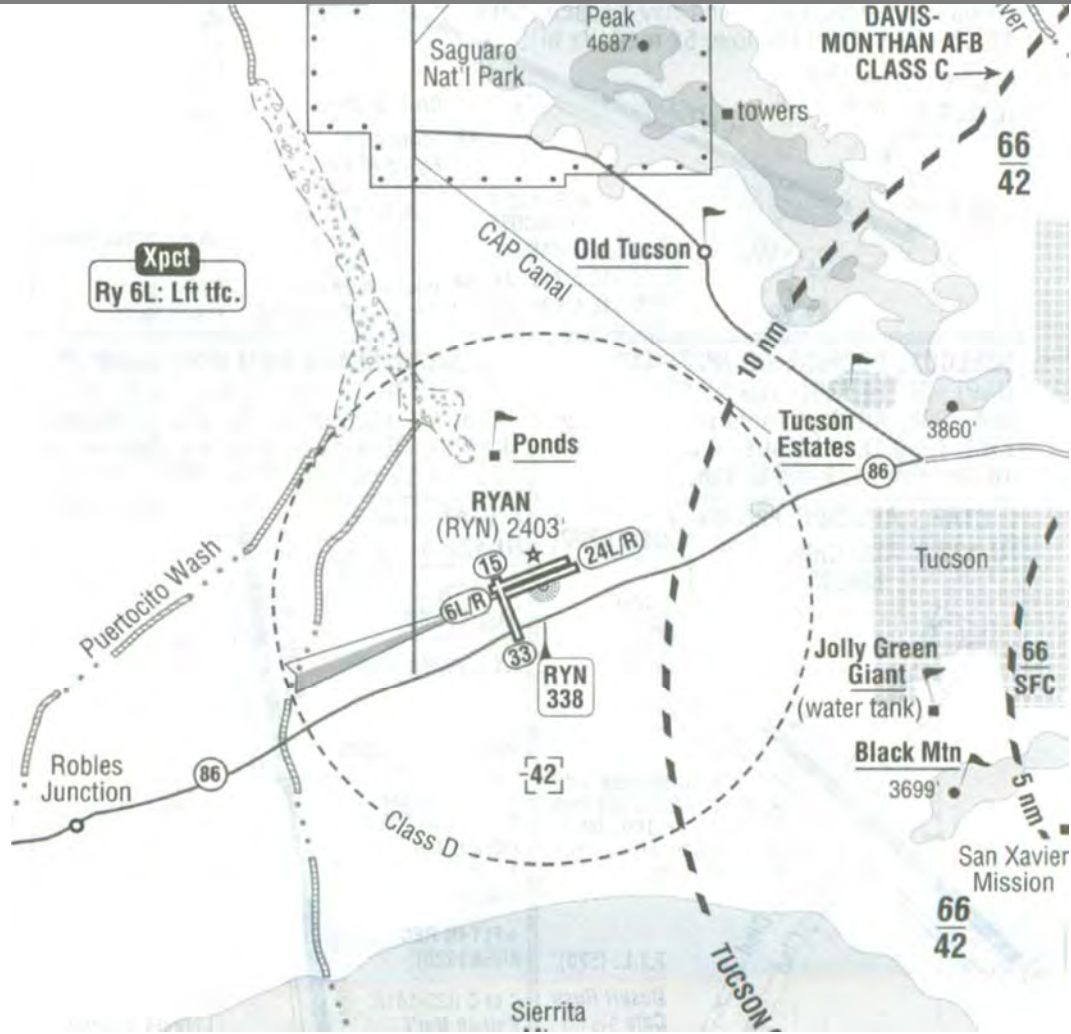
ARR: From NW-N, expect
Rwy 6L: aim at SE corner of Ponds, rpt 2 NM on 45°-entry
Rwy 24R: aim at SW corner of Ponds, rpt 2 NM on 45°-entry

DEP: Direct TUS, call APC 125.9

If Twr closed call TUS Apch 520-829-6121 for Clearance Delivery



RYN Area



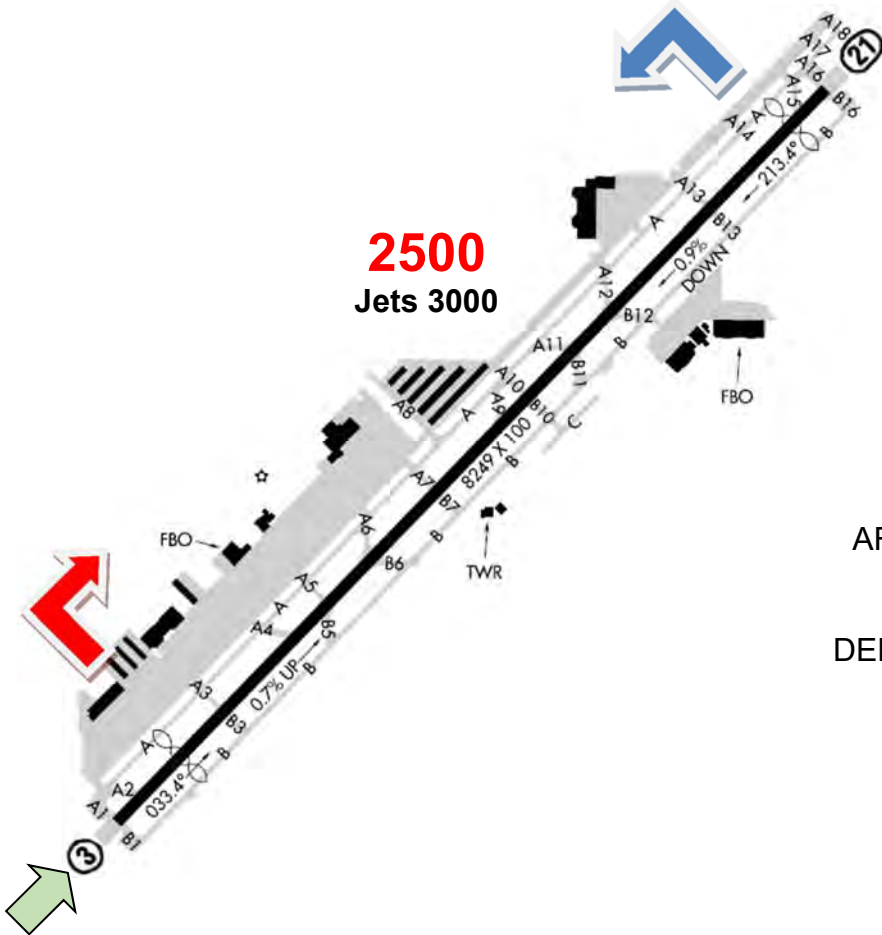
1510 ft

SDL

Scottsdale

ATIS 118,6
TWR 119,9^C
6-21 LT
GND 121,6

2500
Jets 3000



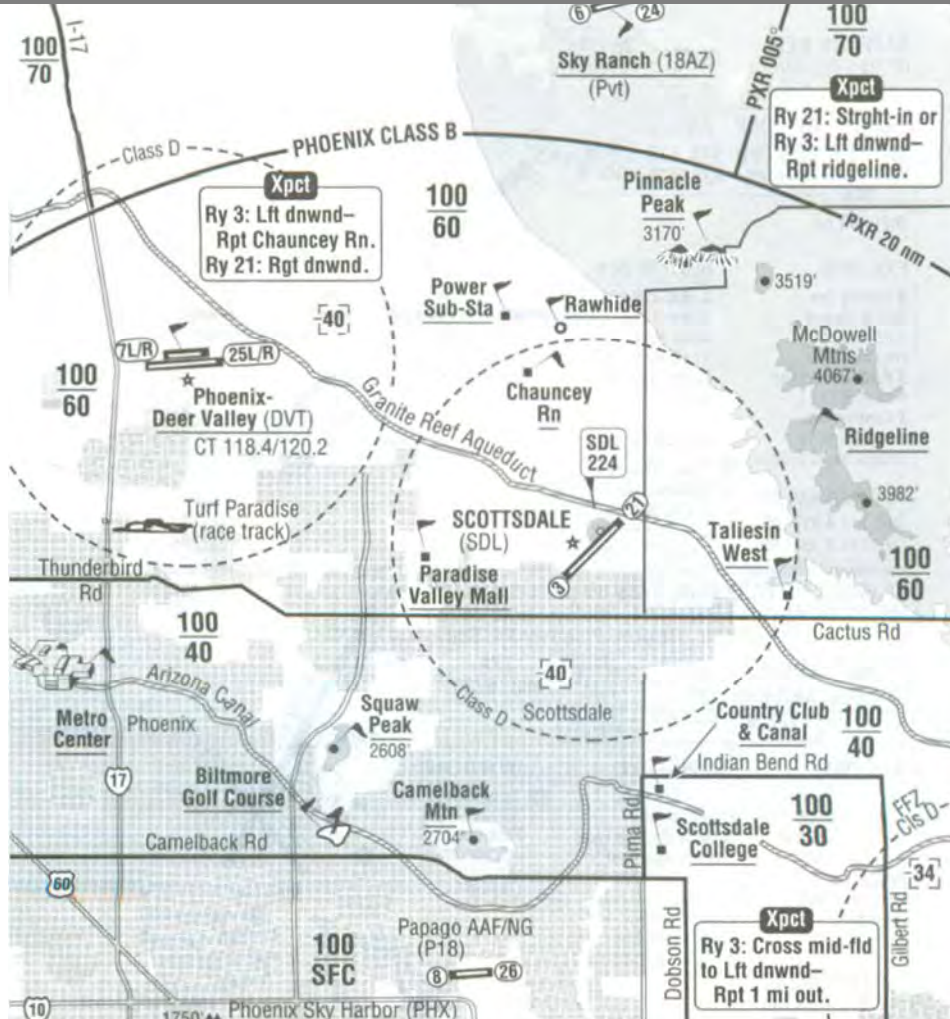
Voluntary curfew 22-06 LT
Touch & Go only 06-2130 LT

Hawks, Coyotes, Helicopters
Avoid homes
Keep pattern high & close

ARR 3: No right downwind or right base
ARR 21: No stop & go; ME: no eng-out practice

DEP: No midfield departure
DEP 21: only Right X-wind departure at Rwy end
No left turn, no straight-out
DEP 3: no right turn before Rwy end

SDL Area



4830 ft

SEZ (SDX)

Sedona

Awos 118,525
CTAF 123,0*

No Touch & go
Overnight Transient Fee

Bird, Wildlife
Mil. traffic, Helicopters, Balloons

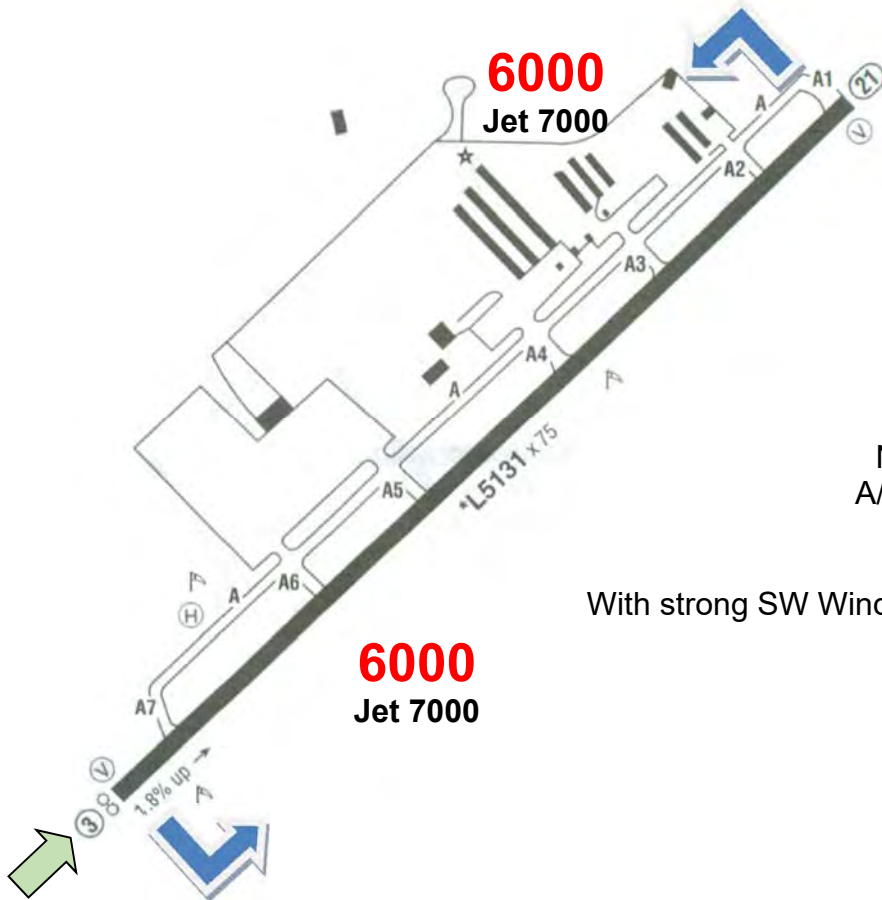
min. Alt 2000' AGL over 3 Wilderness Areas

Noise Sensitive: avoid scenic flights < 6500 ft
A/P on 500 Ft High Mesa; terrain 1 NM N, E, S

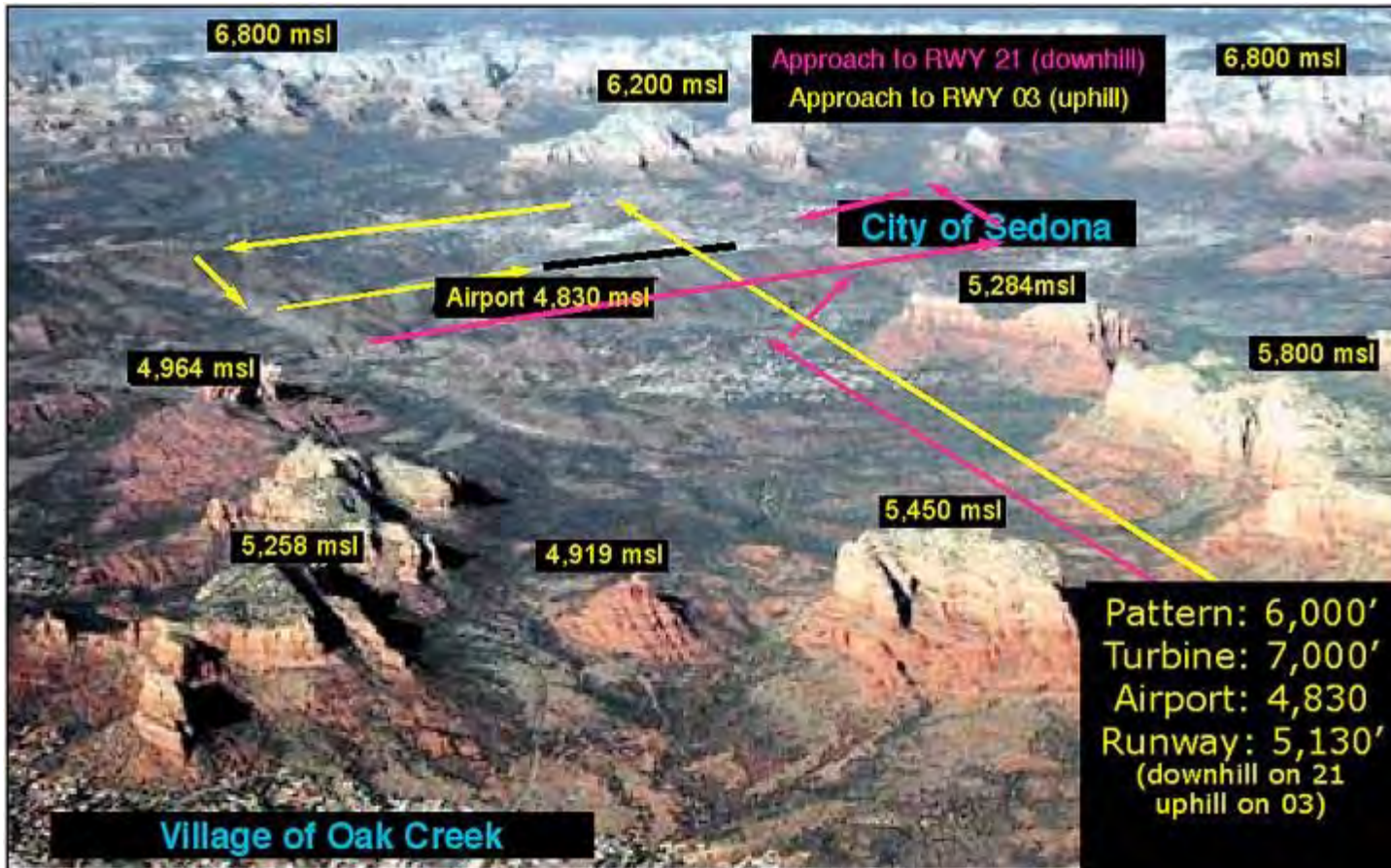
Turbulence may be experienced
With strong SW Wind Down Drafts very probable on Final Rwy 21

ARR: No straight-in
ARR from W preferred
stay on VASI glide path

DEP: No intersection T/O



SEZ (SDX) Area



2643 ft

TUS

Tucson

ATIS 123,8

TWR 118,3

GND 124,4

ILS 11L 111,7^D

Helicopters, Mil. traffic
Glider Operations NW

SEP/MEP expect Rwy 11R/29L

Ldg and parking fees may apply

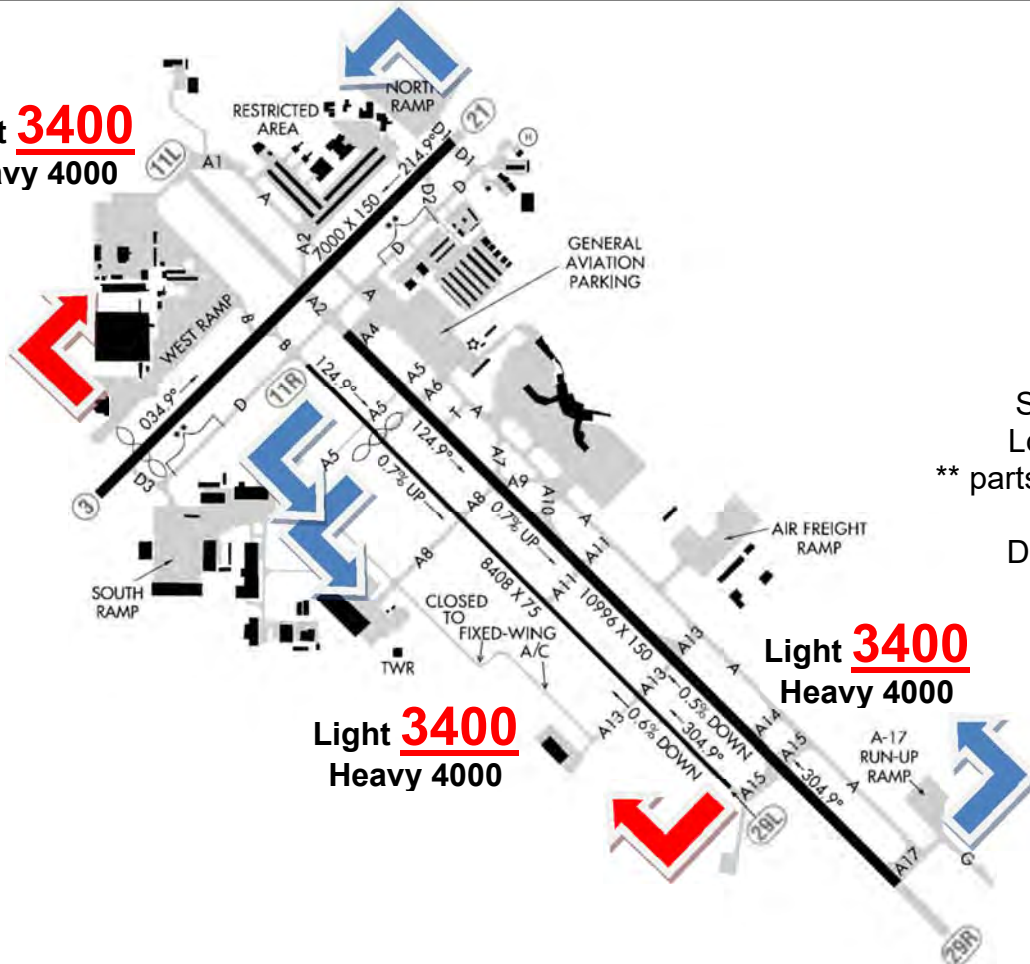
** parts of Twy D not visible from Twr

DEP 11R: min. 3050 ft prior turn

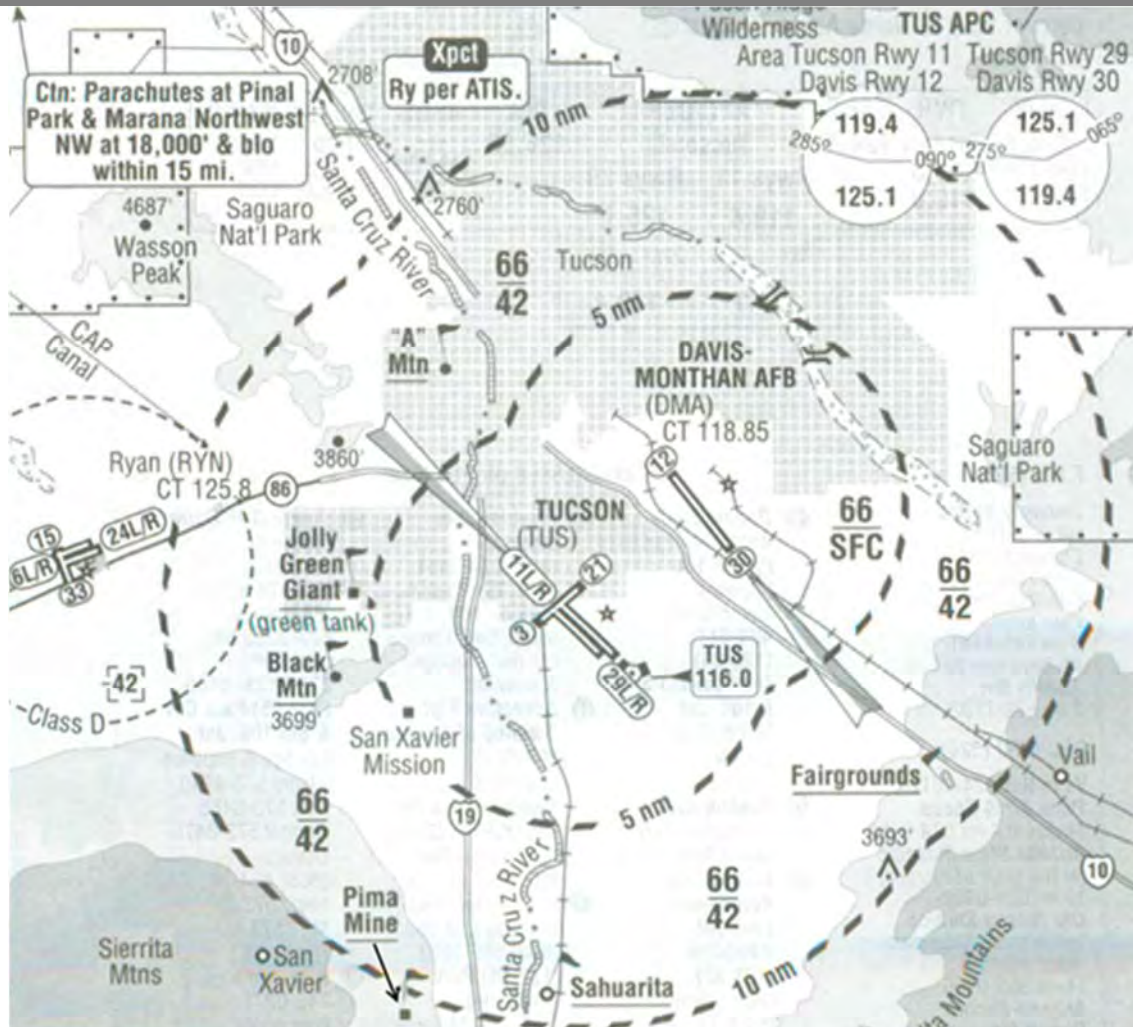
Light **3400**
Heavy 4000

Light **3400**
Heavy 4000

Light **3400**
Heavy 4000



TUS Area



2205 ft

VGT

North Las Vegas

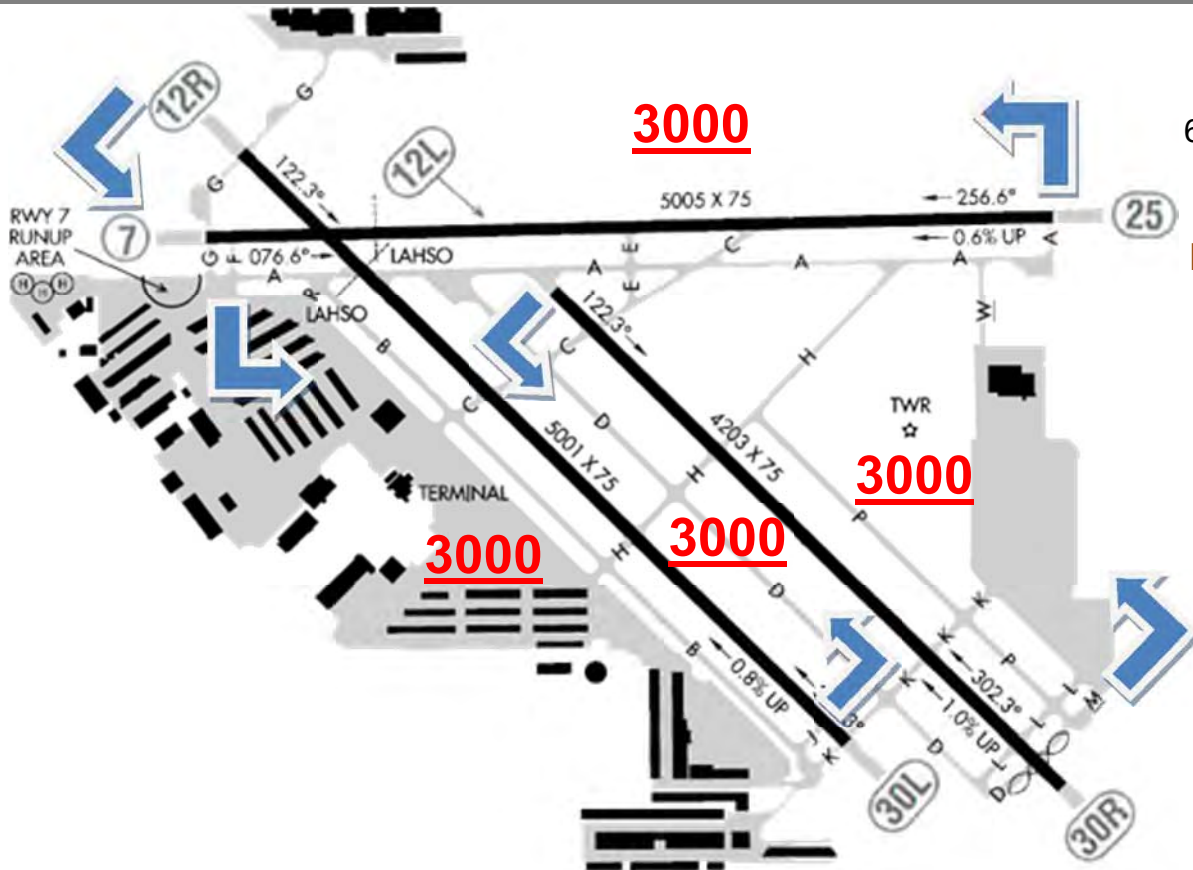
ATIS 118,05

TWR 125,7^{*C}

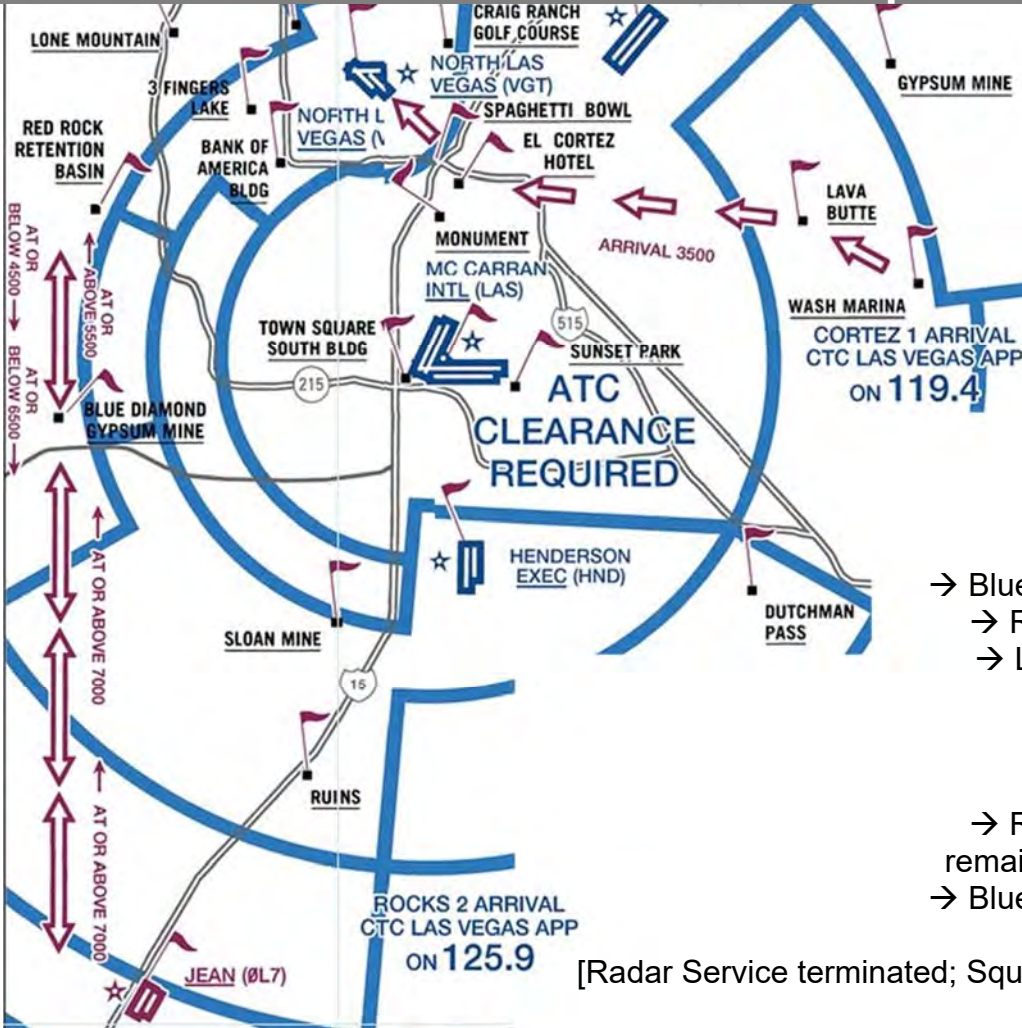
6-20 LT Apr-Sep -21LT

GND 121,7

ILS 12L 110,7^D



VGT Arr./Dep.



from E request Cortez 1 Arr.

Las Vegas APP 119,4
from Wash Marina
→ Lava Butte
→ El Cortez Hotel
call VGT Twr 125,7
→ Spaghetti Bowl
→ VGT A/P

from SSW req. Rocks 2 Arr.

Las Vegas APP 125,9
abeam Jean A/P ≥ 7000 ft
→ Blue Diamond Gypsum Mine, ≥ 7000 ft
→ Red Rock Retention Basin ≥ 5500 ft
→ Lone Mountain, call VGT Twr 125,7

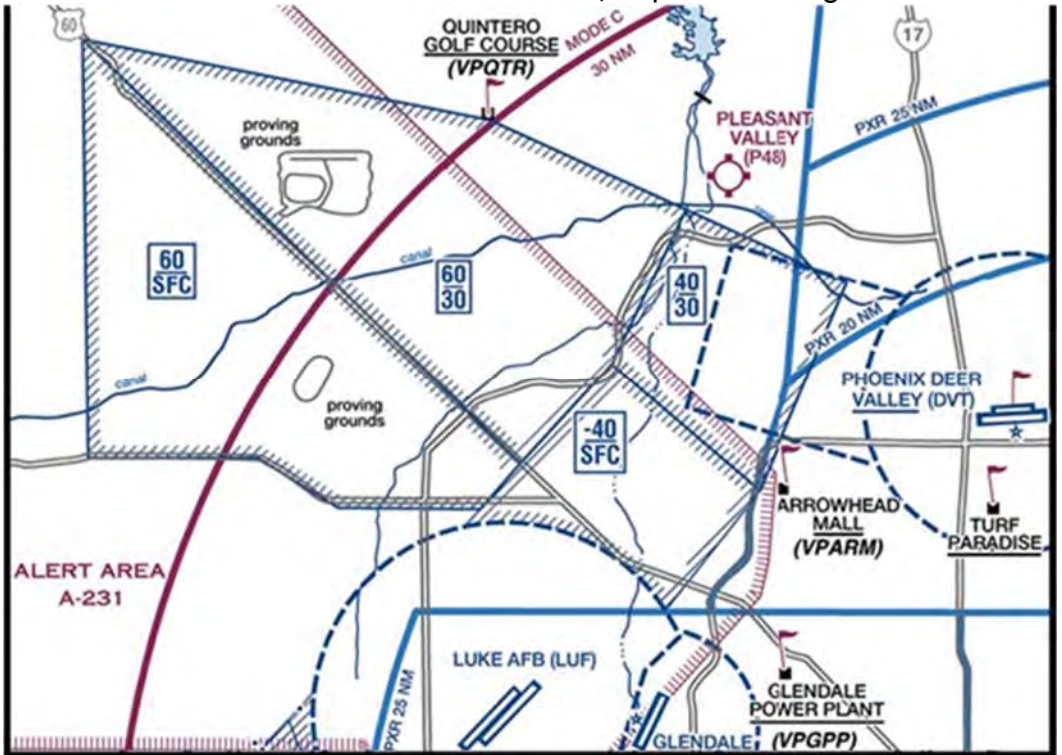
DEP to SSW req. Rocks 2 Dep.

→ Red Rock Retention Basin ≤ 4500 ft
remain N of Bank of America (Hdg 220°)
→ Blue Diamond Gypsum Mine, ≤ 6500 ft
S to abeam Jean A/P

[Radar Service terminated; Squawk 1200; Freq. change approved]

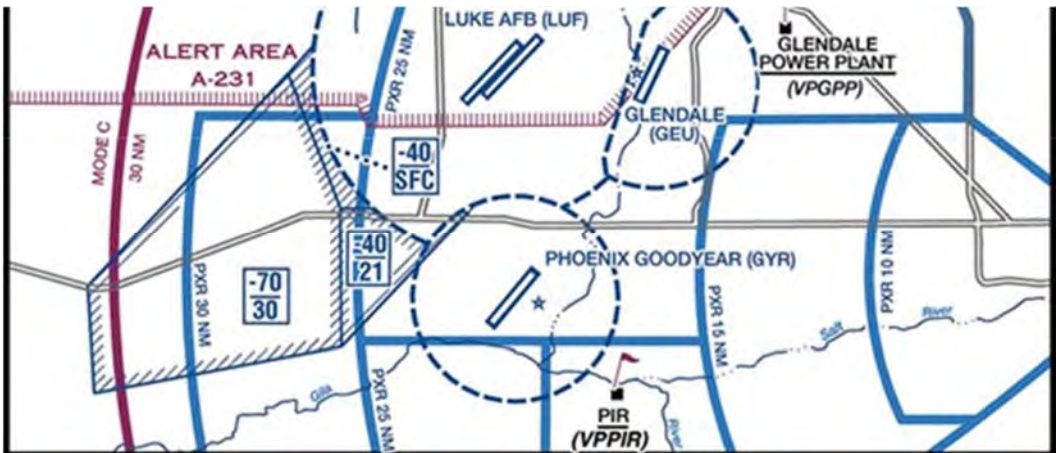
Luke SATR North Area

SATR active Mo-Fr day (check ATIS LUF, DVT, GEU, GYR)
Call **Luke RAPCON 118,15** prior entering



Luke SATR South Area

SATR active Mo-Fr day (check ATIS LUF, DVT, GEU, GYR)
Call **Luke RAPCON 125,45** prior entering

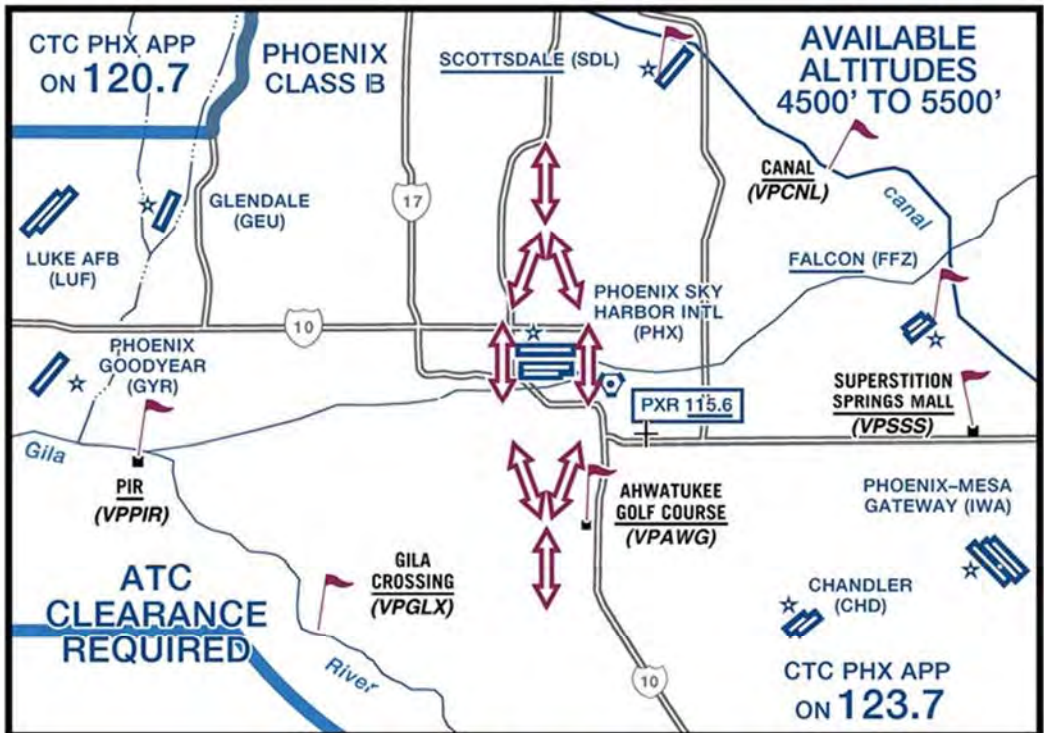


PHX Transition Routes

EAST/WEST ROUTE

VFR ONLY

VFR TRANSITION ROUTE
(ATC CLEARANCE REQUIRED)
ALTITUDE ASSIGNED BY ATC



REQUIREMENTS OF FAR 91.215 AND 91.131 SHALL BE MET

EAST/WEST ROUTE: The VFR Transition Route over Phoenix Sky Harbor Intl (PHX) is based upon the runway in use. If unfamiliar with the transition, advise ATC and expect radar vector.

EAST ROUTE: Altitude as assigned by ATC. Aircraft should fly between the Hohokam Expressway (State Route 143) and the approach end of Runways 26 and 25R/25L.

WEST ROUTE: Altitude as assigned by ATC. Aircraft should fly between Interstate 10 and the approach end of Runways 8 and 7R/7L.

REMAIN CLEAR OF THE CLASS B UNTIL RECEIVING SPECIFIC ATC APPROVAL TO ENTER

Arizona / Nevada

1AZ0	2	Mobile
BXK	3	Buckeye Muni
CGZ	4	Casa Grande Muni
CHD	5	Chandler Muni
	6	CHD Area
DUG	7	Bisbee Douglas Intl
DVT	8	Phoenix Deer Valley
	9	DVT Area
E60	10	Eloy Muni
E63	11	Gila Bend Muni
FFZ	12	Falcon Fld, Mesa
	13	FFZ Area
FHU	14	Sierra Vista Muni `Libby'
	15	FHU Area
FLG	16	Flagstaff Pulliam
	17	FLG Area
GEU	18	Glendale Muni
	19	GEU Area
GYR	20	Phoenix Goodyear
	21	GYR Area

HND (HSH)	22	Henderson Exec.
	23	HND (HSH) Area
IGM	24	Kingman
NYL (YUM)	25	Yuma McAs/ Intl
	26	NYL (YUM) Area
PHX	27	Phoenix Sky Harbour
	28	PHX Area
PRC	29	Love Field, Prescott
	30	PRC Area
RYN	31	Ryan Field, Tucson
	32	RYN Area
SDL	33	Scottsdale
	34	SDL Area
SEZ (SDX)	35	Sedona
	36	SEZ (SDX) Area
TUS	37	Tucson
	38	TUS Area
VGT	39	North Las Vegas
	40	VGT Arr./Dep.
	41	Luke SATR Areas
	42	PHX VFR transition