

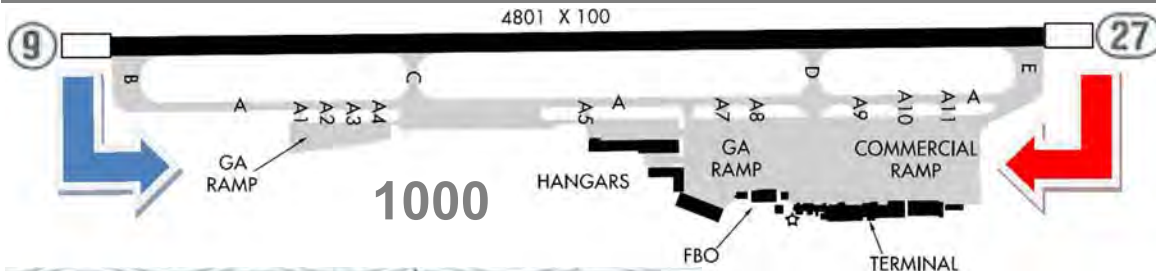
Florida

EYW	2	Key West Intl
FPR	3	Treasure Coast Intl
FXE	4-5	Fort Lauderdale Executive
HWO	6-7	North Perry
LAL	8	Lakeland Linder Regional
MTH	9	Florida Keys Marathon Intl
OBE	10	Okeechobee County
OPF	11-12	Miami Opa Locka Executive
PMP	13-14	Pompano Beach Airpark
SFE	15	Sebring Regional
SGJ	16	St. Augustine / NE Florida Regional
TMP	17-18	Miami Executive
VRB	19-20	Vero Beach Muni
X01	21	Everglades City
X51	22	Homestead

3 ft

EYW

Key West Intl



ATIS 119,675
ASOS 119,65
TWR 118,2 *C
 7-21 LT
GND 121,9

Birds, MIL traffic S and E
 Rest. Area R-2916 is 14 NM NE
 avoid Ops 23-07 LT

ARR: enter traffic area below 2000 ft
 DEP: Rwy-Hdg until Field boundary,
 then turn N or S



Call ahead to have a scooter delivered to the FBO Island City Flying Service and waiting for you, then immediately enjoy the fun in the sun as you ride along the water into Old Town, where your destination is Ricky's Blue Heaven Restaurant. You eat outdoors along with the Key West roosters in the courtyard thickly lined by tropical plants and trees. The pancakes are out of this world, but if they're serving Lobster Benedict...well...that's in the do not miss category. There's simply too much to do in Key West, so spend the entire day. There's Sloppy Joe's, Hog's Breath Saloon, and many more incredible restaurants. Then there's Key West's daily sunsets at Mallory Square with all the accompanying street entertainment

23 ft

FPR

Treasure Coast Intl

ATIS 134,825

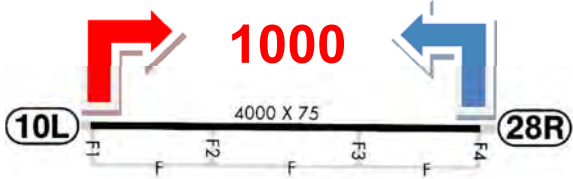
TWR 128,2 *C
7-21 LT

GND 119,55

ILS 10R 110,55^D

Extensive Flight Training
within 20 NM: use 123,3

req. "Taxi to Tiki"

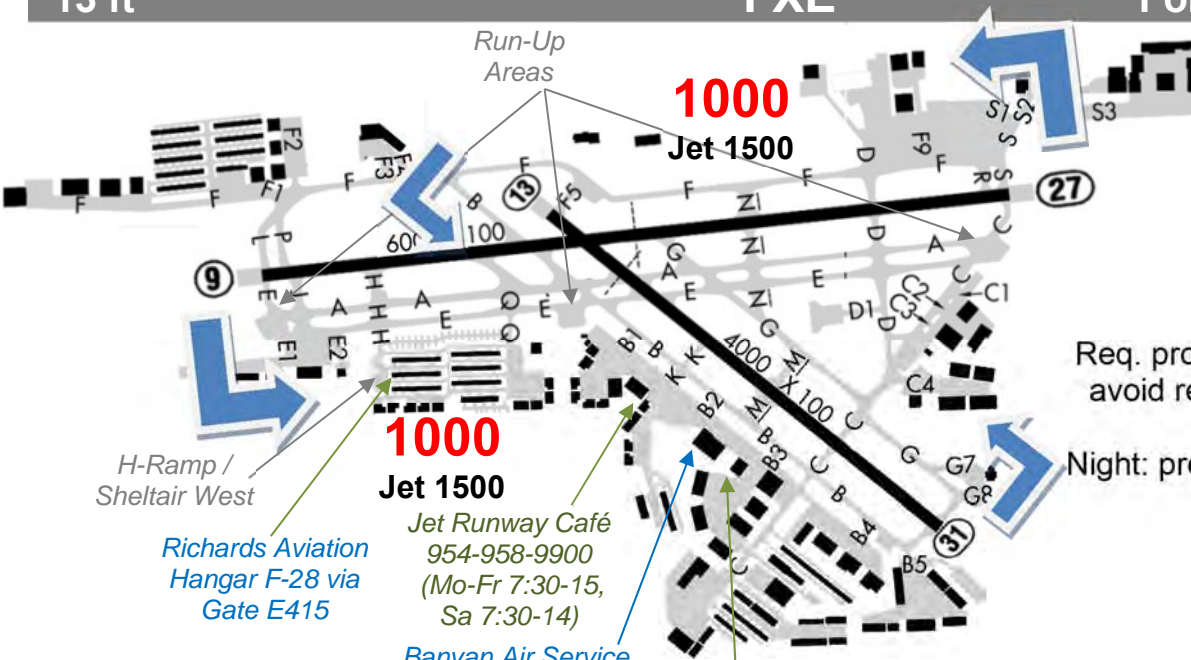


The Airport Tiki
772-489-2285
(Mo-Su 7-15)

13 ft

FXE

Fort Lauderdale Exec



ATIS 119,85

TWR 120,9

GND 121,75

DLV 127,95

ILS 9 111,1

Req. progressive taxi if unfamiliar
avoid residential area ½ NM SW

Night: prefer. Rwy Arr: 09, Dep 27

1000
Jet 1500

H-Ramp /
Sheltair West

Richards Aviation
Hangar F-28 via
Gate E415

Carl Richards
954-292-7608

CFI Joe Pepe
954-817-0278

Keybox: 2468

Ped-Gate: 513

Jet Runway Café
954-958-9900
(Mo-Fr 7:30-15,
Sa 7:30-14)

Banyan Air Service
Banyan Fuel
130,8

Banyan Pilot Shop
888-280-9272
(Mo-Fr 8-18,
Sa 9-16, Su 1-16)

9 ft

HWO

North Perry

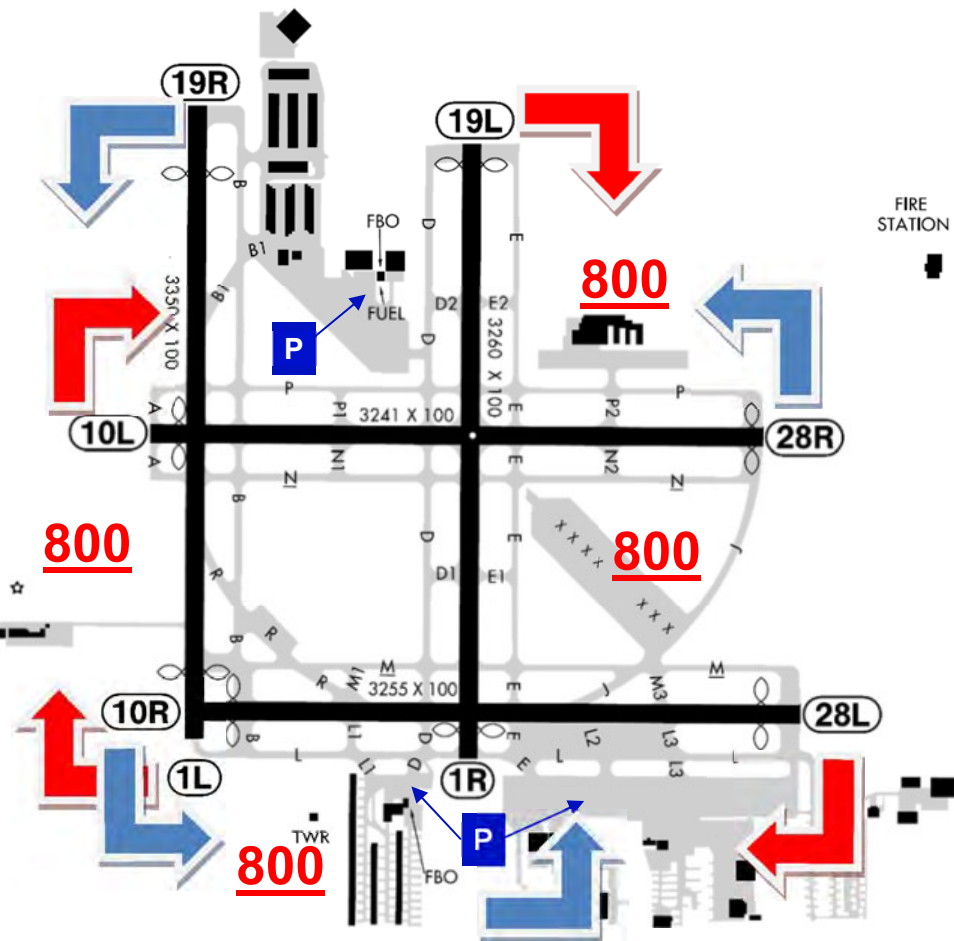
ATIS 135,475

TWR 132,12*^C

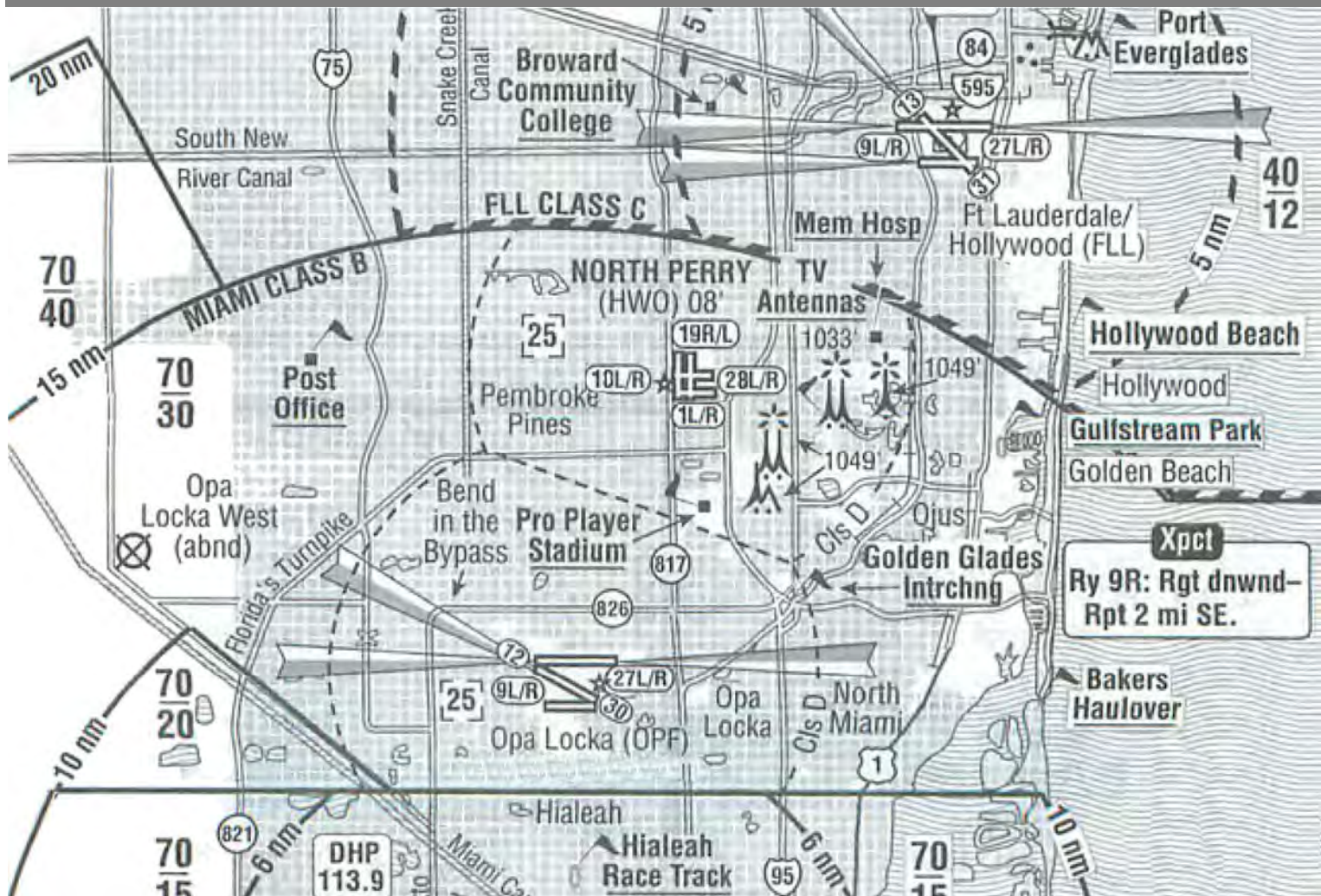
7-21 LT

GND 120,45

Birds



HWO Area



142 ft

LAL

Lakeland Linder Rgnl

Hallback's Bar&Grill
(Mo-We 11-15,
Th 11-15 & 18-23:30,
Sa 11-24, Su 11-18)

TWR

TERMINAL

FBO

U.S. CUSTOMS

1150

5005 X 150

23

ATIS 118,025

TWR 124,5 *C
6-22 LT

GND 121,4

ILS 9

110,1^D

Birds

Rwy 8/26: VFR & Day Only
Rwy 8/26: No Touch & Go

1150

PilotMall.com
800-249-5730
(Mo-Fr 8-18)

1150

1150

Florida Air Museum
863-904-4042
(Tu-Sa 10-16,
Su 12-16)

1150

2205 X 60
1150

26

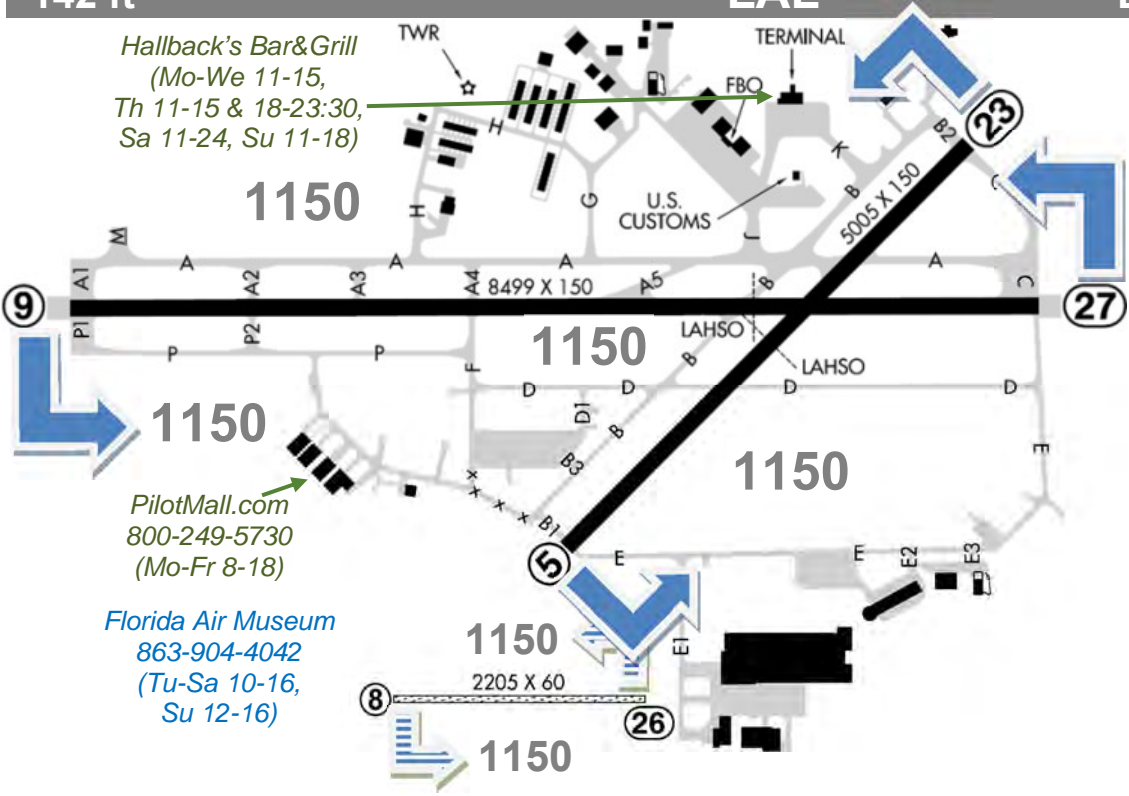
1150

9

27

5

8



5 ft

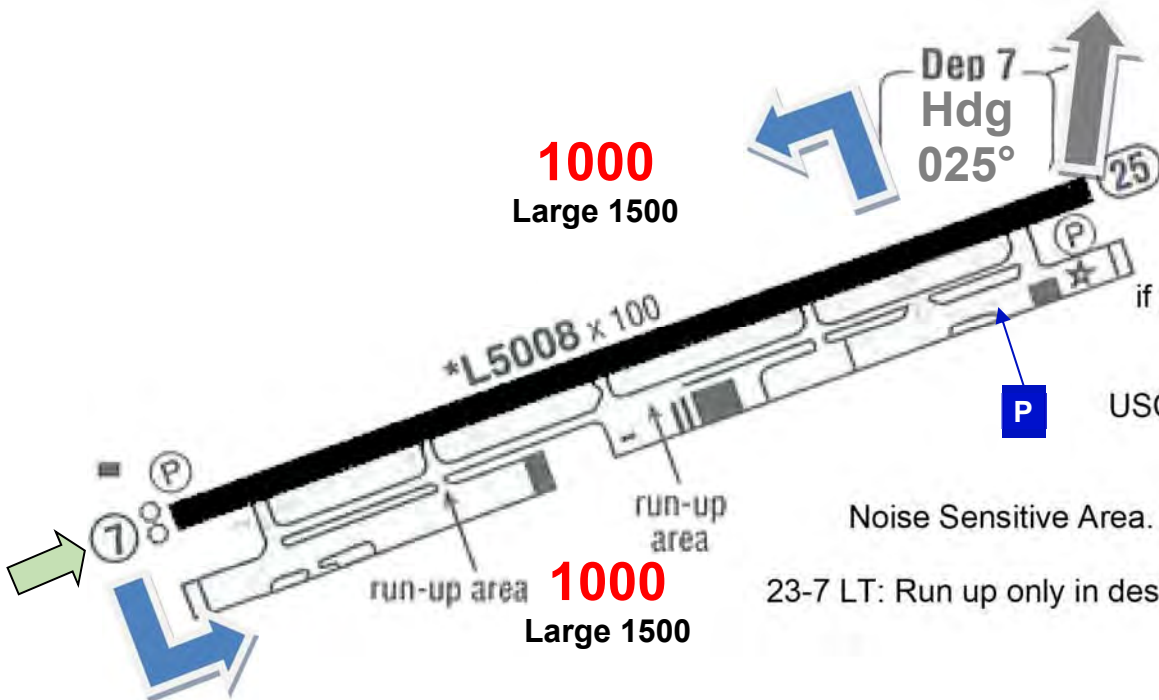
MTH

Florida Keys Marathon Intl

ASOS 135,525

CTAF 122,8*

Birds



1000
Large 1500

1000
Large 1500

Twy A restricted:
if plane with wingspan > 79 ft
Lands or Takes Off

USCBP User Fee Facility open
Wed-Sun 14-2130 z

Noise Sensitive Area. Use NBAA Ns Abtmt Procs

23-7 LT: Run up only in designated areas or FBO ramp

Wooden Spoon
305-743-8383
7007 Overseas Hwy
(Mo-Su 5:30-13:30)

The Stuffed Pig
305-743-4059
3520 Overseas Hwy
(Mo-Sa 6-14, Su 6-12)

The Island Fish Co. Tiki Bar Restaurant
305-743-4191
12648 Overseas Hwy
(Mo-Su 11:30-23)
from the Jet Center (2 courtesy cars, first-come, first-served) turn left onto U.S. 1 and travel 2.2 SM (through two stoplights). Make the first left turn into the Island after passing through the third stoplight at Sadowski Causeway, KCB

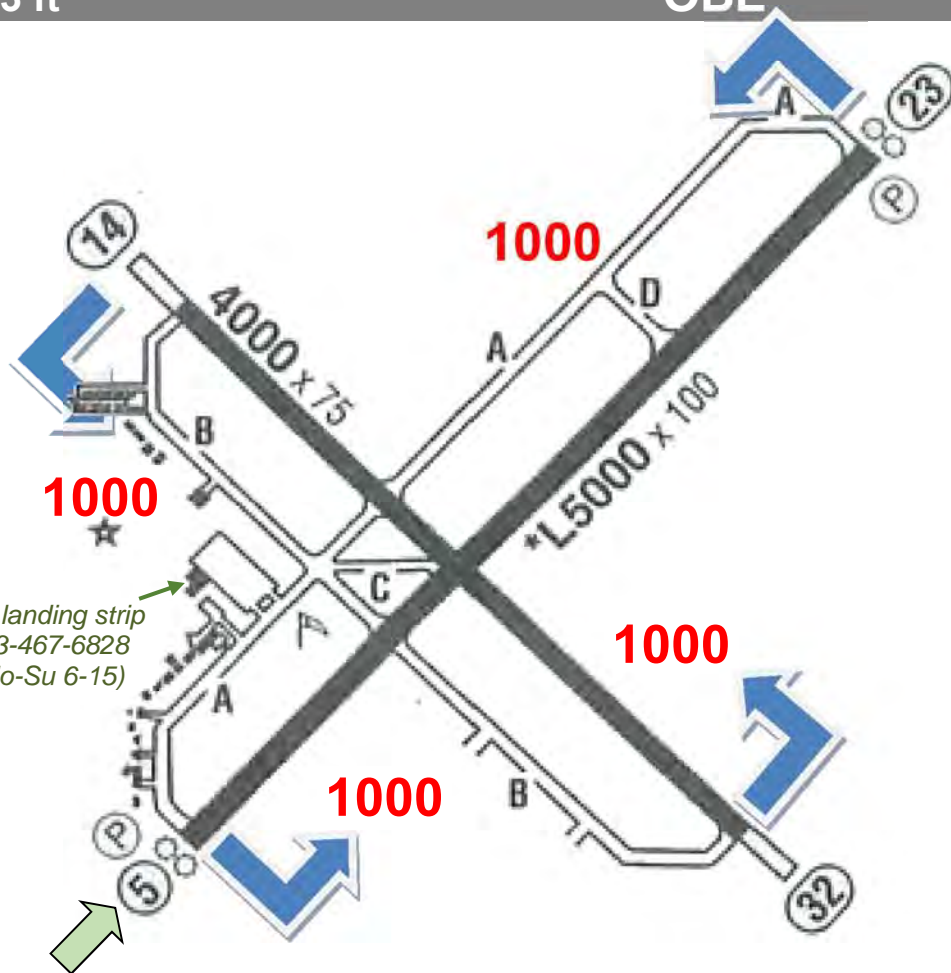
33 ft

OBE

Okeechobee County

Awos 118,675

CTAF 123,0*



8 ft

OPF

Miami Opa Locka Exec

ATIS 125,9

TWR 134,675*^C

7-23 LT

GND 120,025

ILS 9L 110,5^D

ILS 12 111,55^D

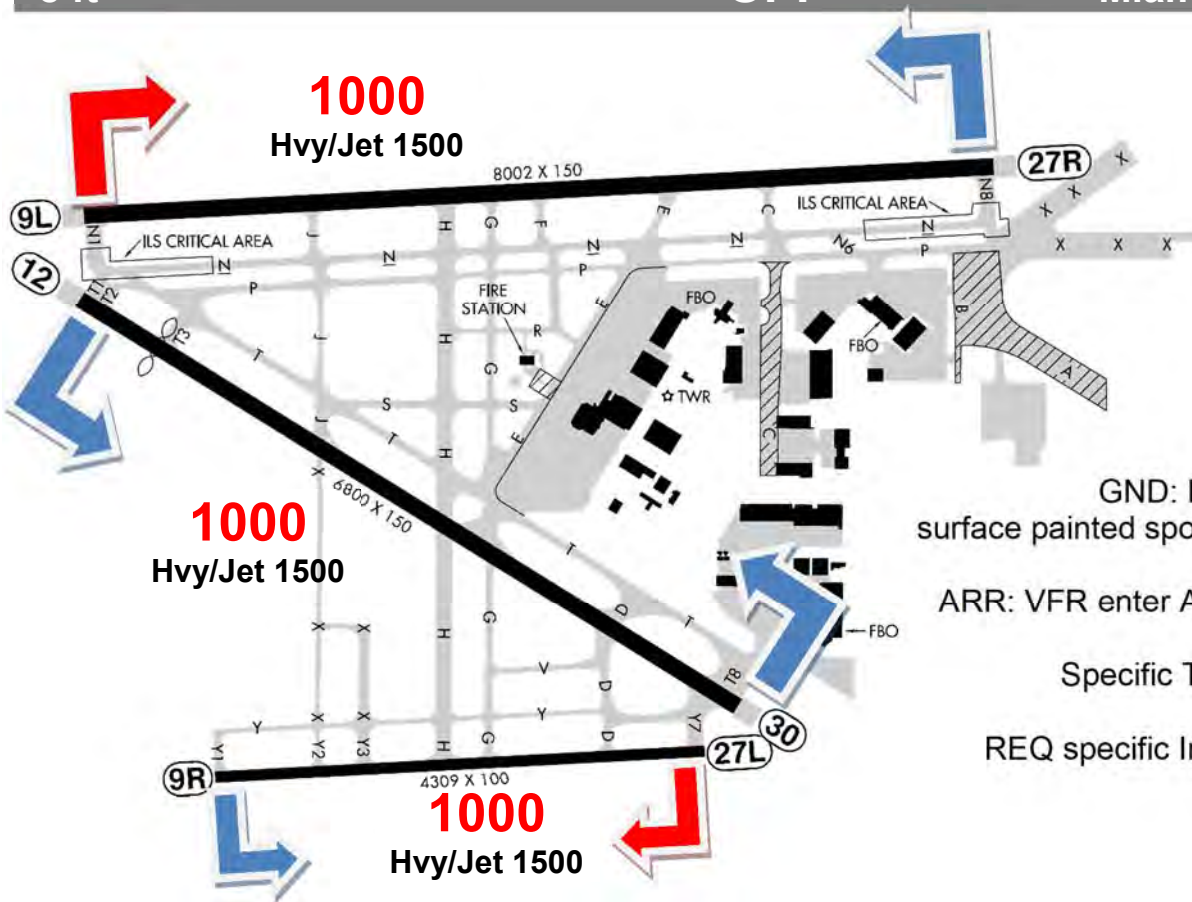
ILS 27R 111,35^D

Birds

GND: Report Position by using surface painted spot numbers (Ramp-Exits)

ARR: VFR enter A/P traffic area < 2,000 ft

Specific Traffic pattern published, compliance Mandatory REQ specific Instructions on Initial Call



1000
Hvy/Jet 1500

1000
Hvy/Jet 1500

1000
Hvy/Jet 1500

19 ft

PMP

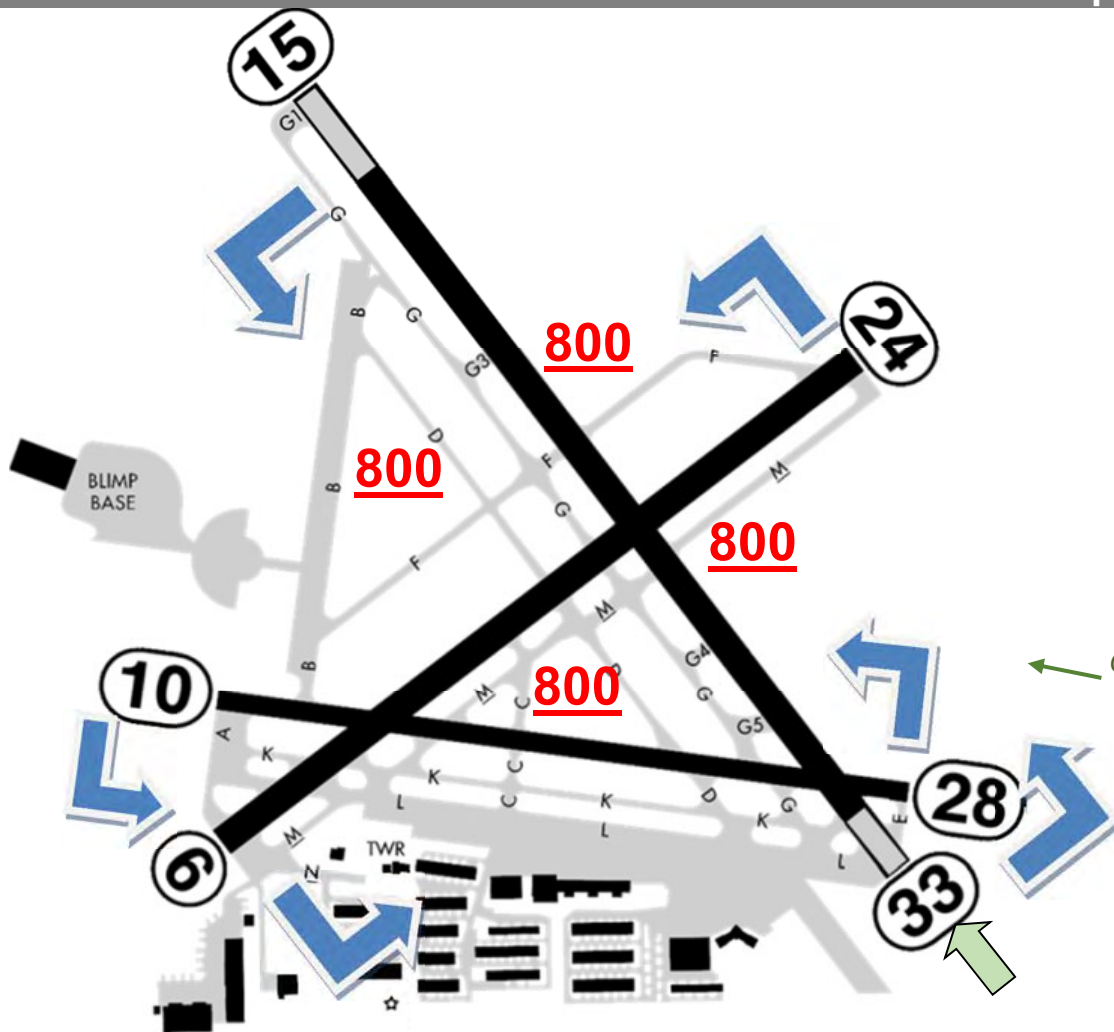
Pompano Beach Airpark

ATIS 120,55

TWR 125,4 *C
7-21 LT

GND 121,9

Loc 15 109,75



← Galuppi's restaurant
954-785-0226
(Mo-Su 7-24)

PMP Area



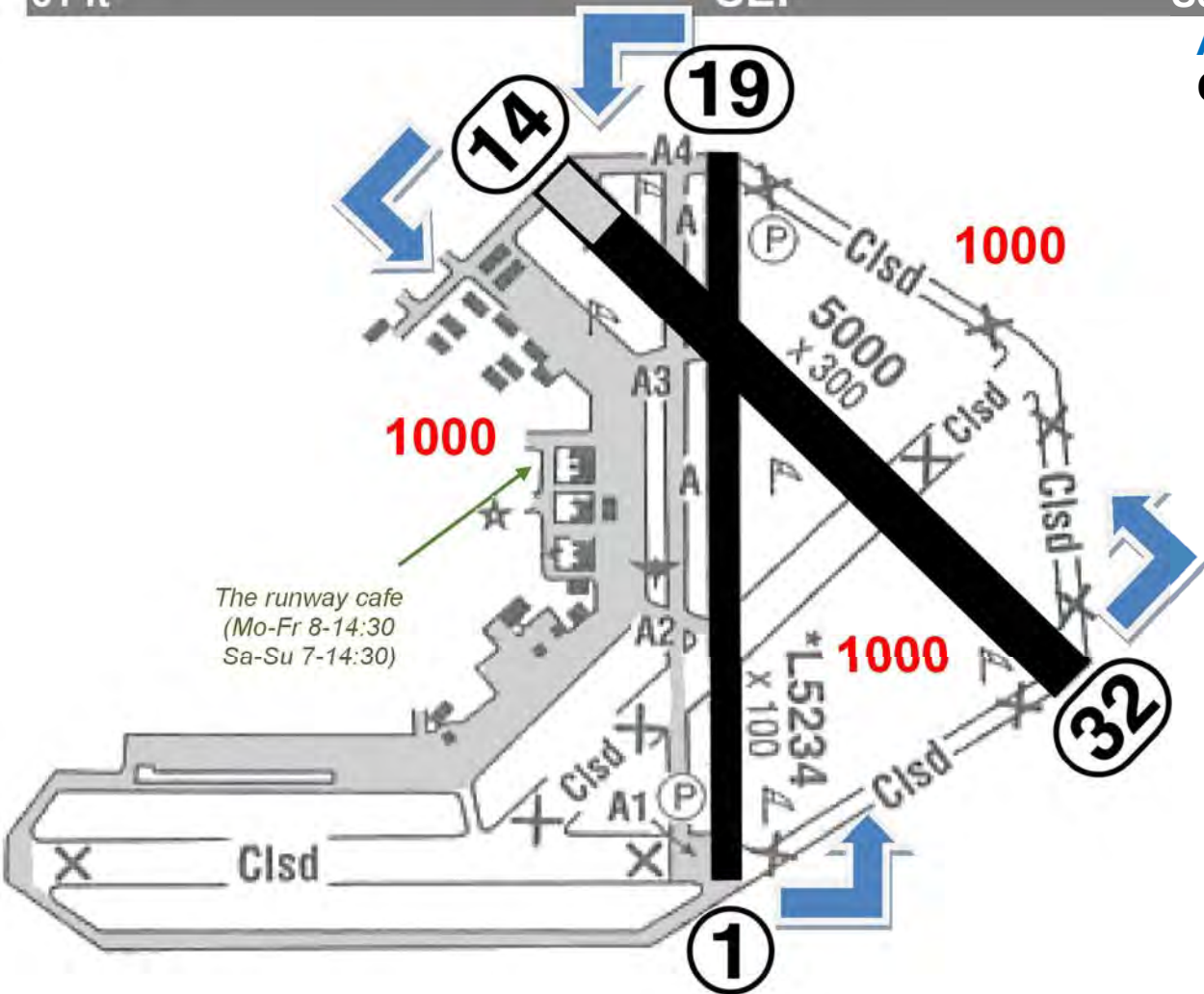
61 ft

SEF

Sebring Regional

Awos 119,475

CTAF 122,7*



10 ft

SGJ

NE Florida Regional

ATIS 119,625

TWR 127,625*^C

7-21 LT

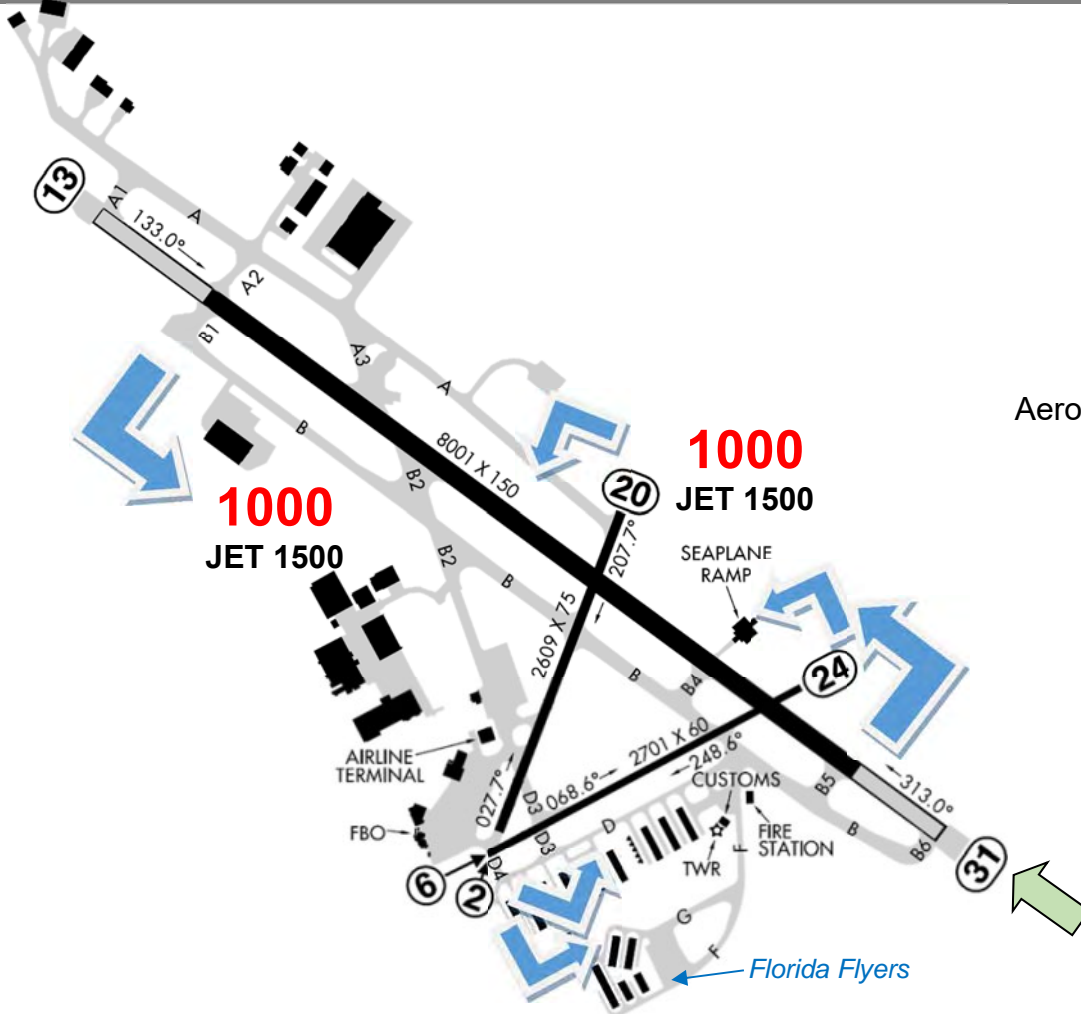
GND 121,175

Jacksonville

120,75

ILS 31 111,1

Rwy 2/20: day only
Aerobatic Activity NE of Rwy 13/31
SFC - 3.500 ft Inter. SR-SS



1000
JET 1500

1000
JET 1500

Florida Flyers

10 ft

TMB

Miami Exec

ATIS 124,0

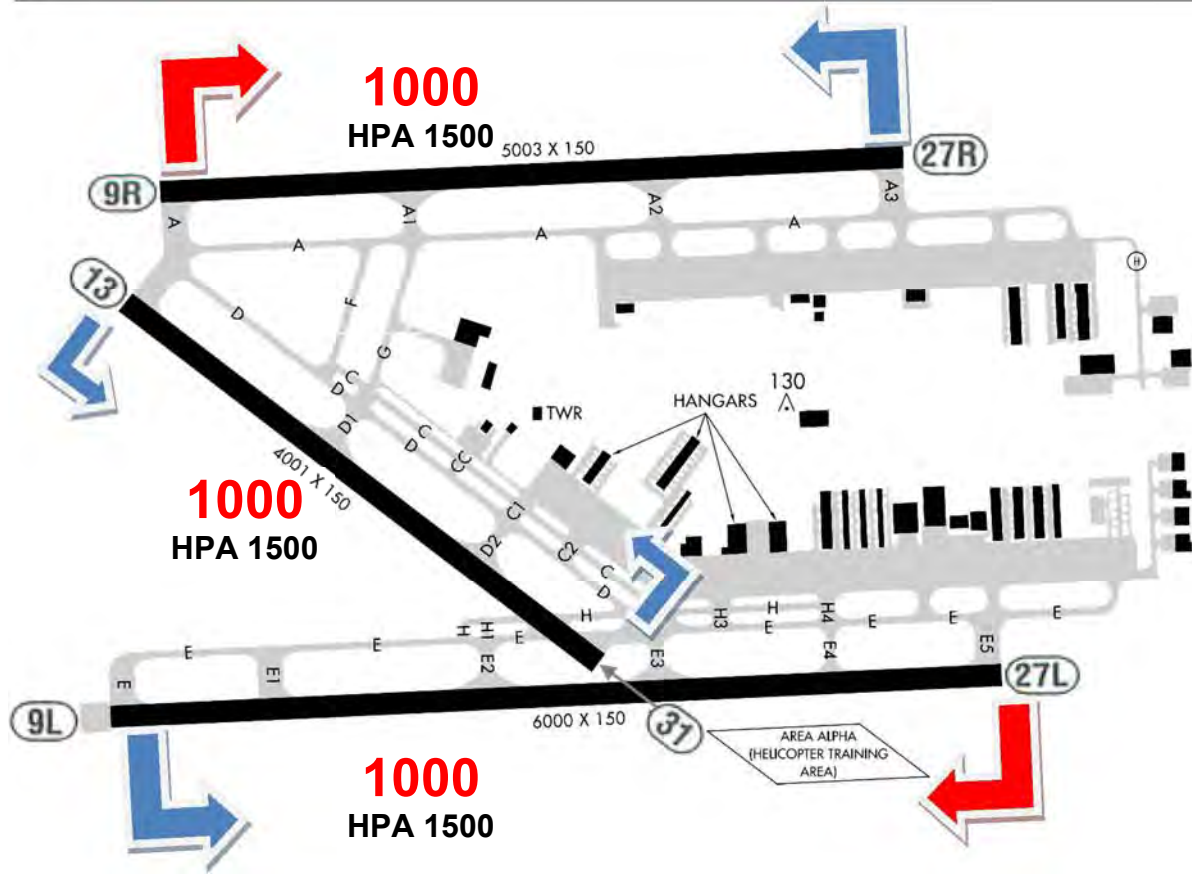
TWR 118,9 *C

7-23 LT

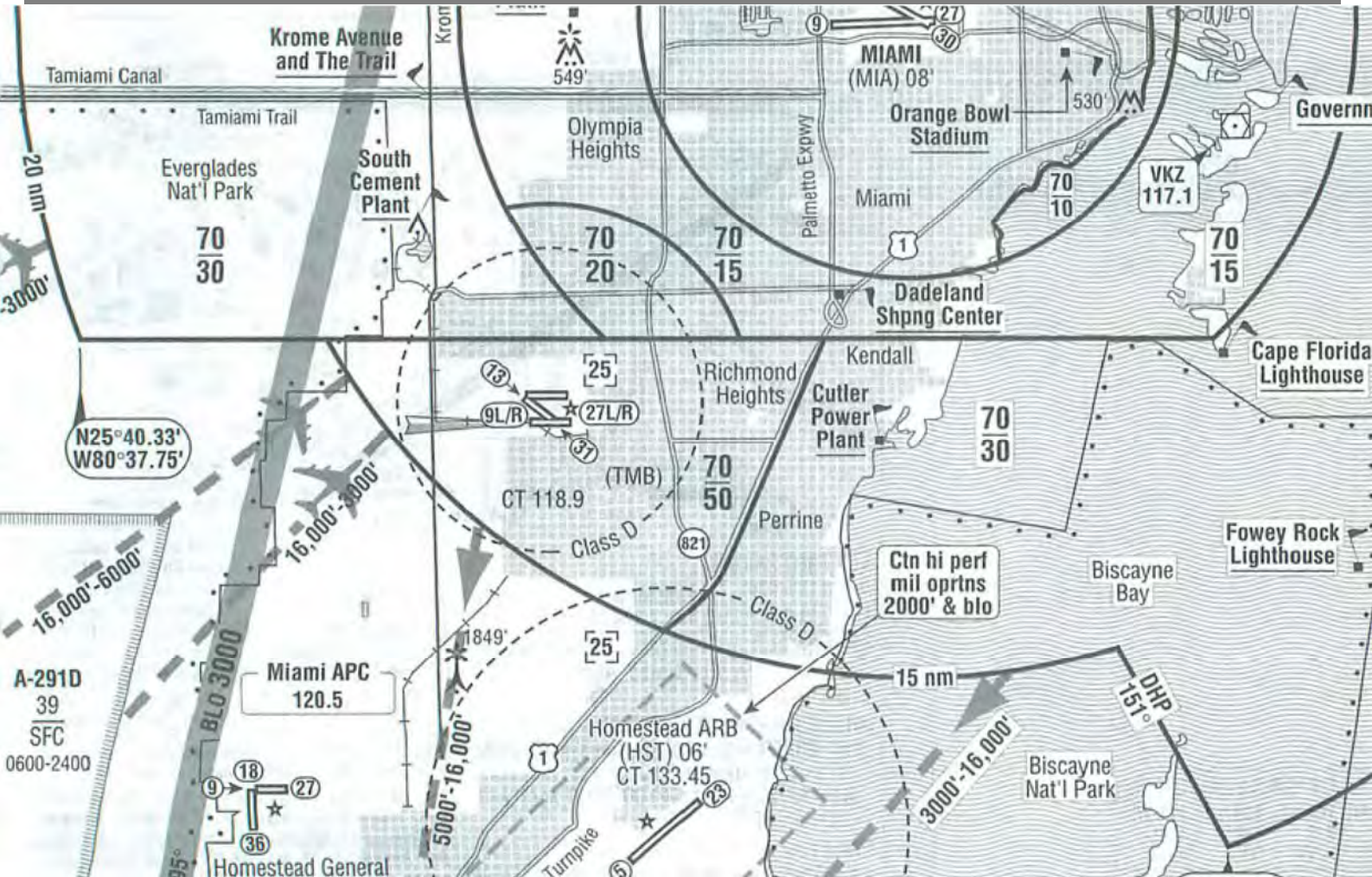
GND 121,7

ILS 09L 108,7

DEP: no turns below 1000 ft



TMB Area



23 ft

VRB

Vero Beach Muni

ATIS 120,575

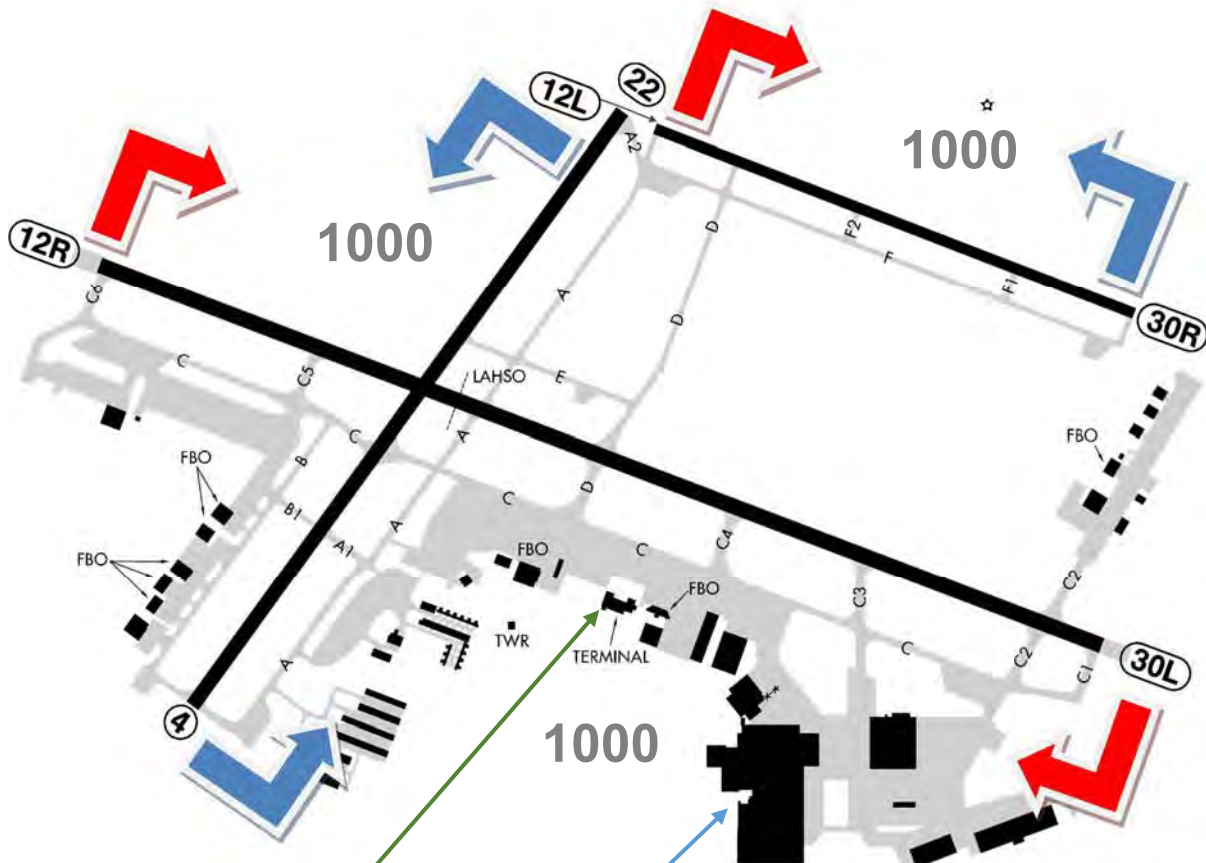
TWR 126,3 *C

7-21 LT

133,15

GND 127,45

No Touch & go 22-7LT



CJ cannon's
 772-567-7727
 (Mo-Sa 7-21, Su 7-14)

Piper Aircraft Factory
 772-567-4361
 Tours Mo-Th 10-13

VRB Area



5 ft

X01

Everglades Airpark

CTAF 123,075*

Birds

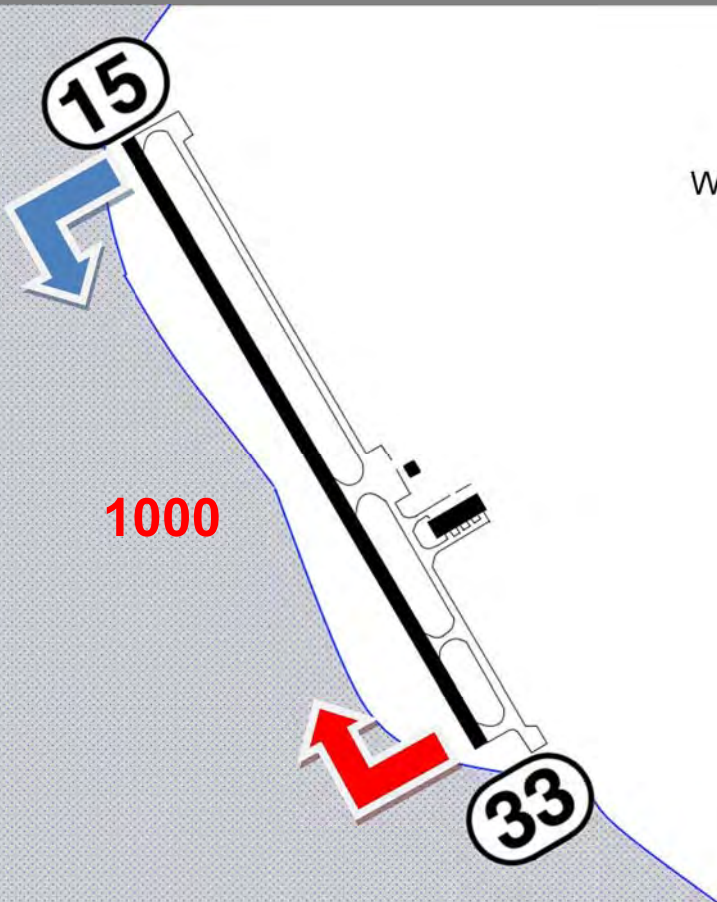
VFR only

Watch the crosswinds coming down below the treeline
cement drive recommended

Bikes rent \$6

*Small Fishing village on the Gulf Coast,
Airboat Rides, Great Seafood restaurants*

1000



5 ft

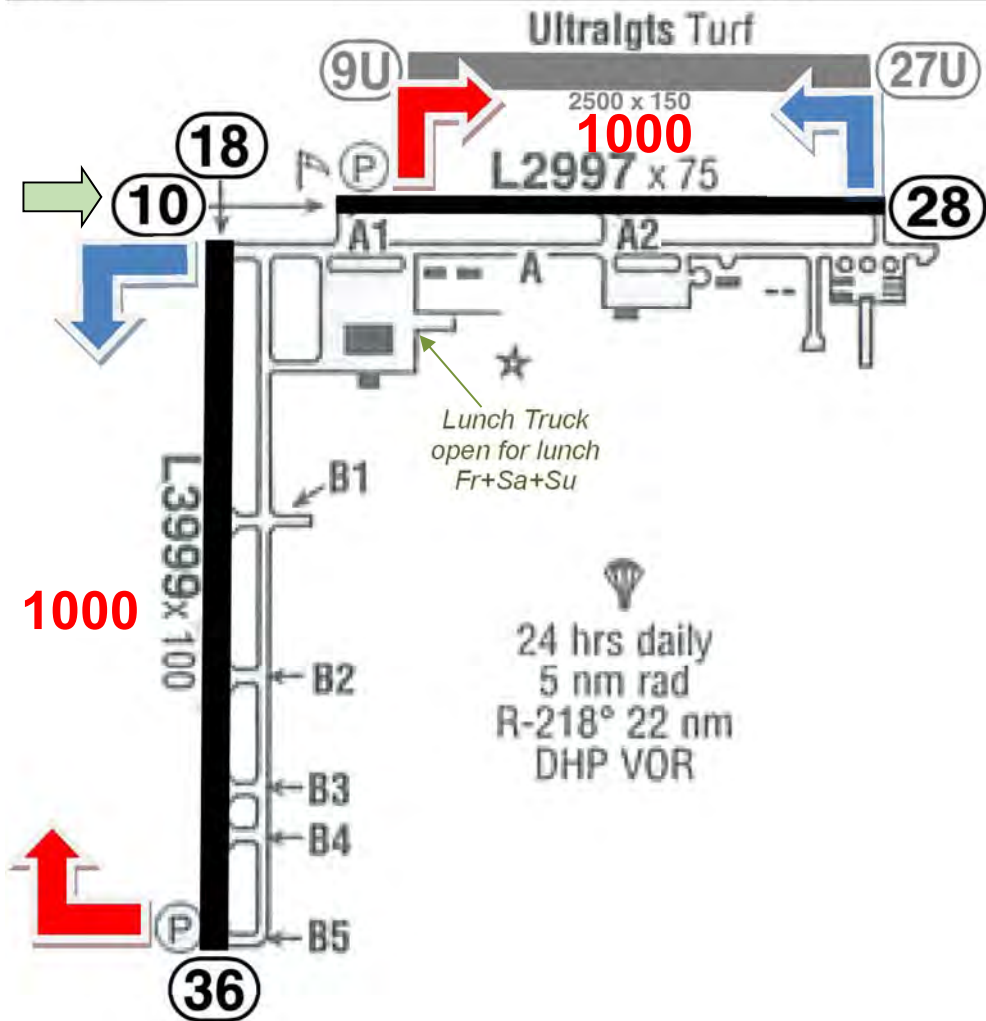
X51

Homestead

Awos 118,375

CTAF 122,8*

Parachute SE Of A/P
 Extensive Crop Dusting In Area
 Aerobatic S & E of THR 36
 RC Models 1.8 NM N of THR 18
 Gliders at or below 8,000 ft



Florida

EYW	2	Key West Intl
FPR	3	Treasure Coast Intl
FXE	4-5	Fort Lauderdale Executive
HWO	6-7	North Perry
LAL	8	Lakeland Linder Regional
MTH	9	Florida Keys Marathon Intl
OBE	10	Okeechobee County
OPF	11-12	Miami Opa Locka Executive
PMP	13-14	Pompano Beach Airpark
SFE	15	Sebring Regional
SGJ	16	St. Augustine / NE Florida Regional
TMP	17-18	Miami Executive
VRB	19-20	Vero Beach Muni
X01	21	Everglades City
X51	22	Homestead